

INSIDE THIS ISSUE

President's Message	Pg 3
Double Diamond Award Given	Pg 6
2013 Rendezvous Recap & Photos	Pg 15
Unit News	Pg 21
BCHA Hot Topic	Pg 24

For more BCHC information, see our website:
bchcalifornia.org

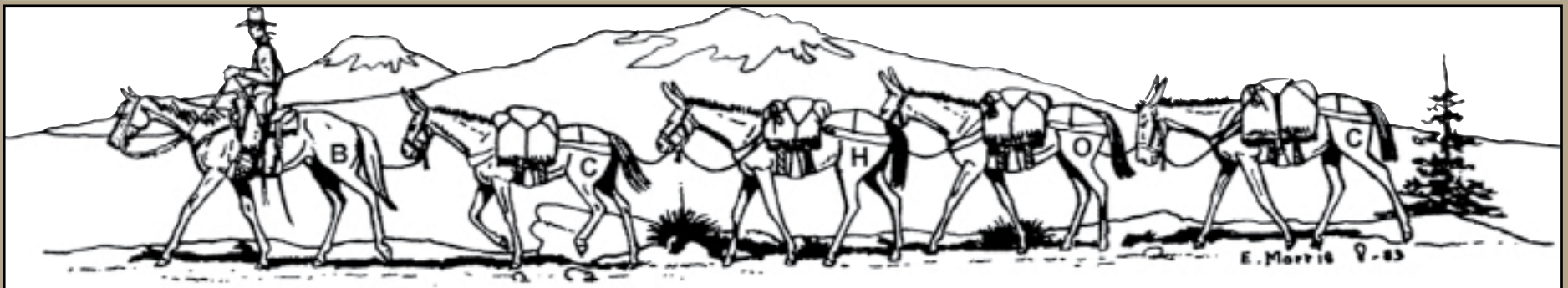
BCHC

BACKCOUNTRY HORSEMEN OF
CALIFORNIA
13061 Rosedale Hwy
Suite G, Box 217
Bakersfield, CA 93314

ADDRESS SERVICE REQUESTED

NONPROFIT
Organization
U.S. Postage
PAID
Manteca, CA
95336
No. 43

The Backcountry News



Volume 20, Issue 3

The Official Publication of Backcountry Horsemen of California

FALL 2013



*San Joaquin Sierra
Chamberlain Meadow Project*



Here are some photos of the building of a horse camp at Chamberlain Meadow in High Sierra (8200 ft) high country. This camp is within a 1000 ft of the John Muir Wilderness on the Maxom trail. Our BCHC Unit decided to Adopt the meadow and were given permission to build a Forest Service approved pit toilet. All materials had to be packed on mules to build the toilet.

Read full story on page 19

Story & photos submitted by
Charles (Toby) Horst

The Backcountry News

An internal publication of the Backcountry Horsemen of California

Editor · Rhonda Strickland

Canyon Lake, California

(951) 951-522-8757

Email: news@bchcalifornia.org or BCHC.News@gmail.com

Backcountry Horsemen of California Official Website:

www.bchcalifornia.org

Printed by The Manteca Bulletin and distributed by

The Oakdale Leader

Publication Information: The Backcountry News is the official journal of the Backcountry Horsemen of California, Inc., published three times per year. All rights reserved. It is an independent publication with news and information of interest to Backcountry Horsemen members, with an average circulation of approximately 4000 per issue. Annual subscriptions are \$15.00 for non-members. Nonprofit postage paid at Manteca, CA.

Who is BCHC? The Backcountry Horsemen of California, Inc. is a 501c4 nonprofit organization incorporated in the State of California, March 13, 1990, with a 501(c)3 education foundation established in 2007. The Backcountry Horsemen of California, Inc., reserves the right to refuse any advertisements and/or articles that are inconsistent with the Backcountry Horsemen of California's objectives and purpose statement. Other material will be printed at the Editor's discretion.

Disclaimer: Articles and advertisements that appear in The Backcountry News do not necessarily reflect the position or opinion of BCHC or its officers and members. Nor does publication of said articles and advertisements constitute an endorsement of the views or of the goods or services offered therein that they may express. Accuracy of all material is the sole responsibility of the authors. BCHC is not responsible for unsolicited material of any kind.

Reader Submission: The Backcountry News welcomes reader contributions, event and calendar dates, and Unit news. These will be printed on a space-available basis. Submissions may be sent on disk in a Microsoft Word format, emailed or sent by regular mail. Longer articles are subject to edit for space at the discretion of the Editor. Photos may not be returned.

Deadlines: Advertising, announcements, pictures and other copy must be received at The Backcountry News by the deadlines listed below.

Deadline	Publication Date
December 19, 2013	January 2014 – Winter
April 18, 2014	May 2014 – Spring/Summer
August 15, 2014	September 2014 – Fall

Advertising Rates per Issue: Rates effective January 2012. All ads must be paid in advance.

Number of Issues:	1	2	3	>	Cost per Issue
Full Page	\$150.00	\$142.50	\$135.00		
Half Page (h/v)	\$100.00	\$95.00	\$90.00		
Quarter Page (h/v)	\$80.00	\$76.00	\$72.00		
Bus. Card (h/v)	\$25.00	\$23.75	\$22.50		

Advertising: All ads must include all fonts and images used in artwork. Ads must be at a resolution of 300 pixels per inch at the actual size used in the artwork. Mail payment to the BCHC Treasurer. Checks returned from the bank will have a \$25.00 return check fee. No advertising will be accepted from advertisers with outstanding balances. Liability by The Backcountry News shall not exceed the space occupied by the error. Never shall The Backcountry News be liable for any general, special or consequential damages. All claims for adjustments must be made within 30 days of the first publication of said ad.

2013 Executive Committee

President

Dennis Serpa · (209) 848-4017 · dmserpa@cwnet.com

1st Vice President

Richard Waller · (805) 489-8885 · homeranch@gmail.com

2nd Vice President

Carrie Johnen · (209) 245-5617 · CJubilee@comcast.net

Secretary

Kaye Bruns · (661) 803-5075 · kowgrl@charter.net

Treasurer

Lynn Joiner · (661) 747-6347 · lynnjoiner@sbcglobal.net

Vice President of Public Lands

Bob Gage · (530) 521-7369 · bobgage@wildblue.net

Vice President of Education

Dan Horn · (707) 544-4543 · bearstrap@msn.com

BCHA Executive Director/Chairman

Jim McGarvey · 706-669-1015 ExecDirector@backcountryhorse.com

BCHA National Directors

Ann Lange · (760) 378-2113 · kvvet@onemain.com

Pete Kriger · (909) 910-4619 · pkrigerjr@yahoo.com

BCHA Alternate Director

Dan Clifford · (619) 659-3038 · bigeasycowboy@mac.com

2013 State Coordinators

Accounting

Weir and Associates · (661) 323-1514

Annual Meeting

Kaye Bruns · (661) 803-5075 · kowgrl@charter.net

Newsletter Editor

Rhonda Strickland · (951) 522-8757 · news@bchcalifornia.org

Insurance

Richard Waller · (805) 489-8885 · homeranch@gmail.com

Membership

Chip and Linda Herzig · Toll Free: (866) 748-2033 · membership@bchcalifornia.org

Rendezvous General Chairman

Thad Chodakauskas - (951) 312-0724 - ctchod@aol.com

BCHC Youth Coordinators

Jacque Murphy · (707) 498-6648 · brennalu@hotmai.com

Cathy Andrews · catforestandrews@gmail.com

Web Coordinator

Jacque Murphy · (707) 498-6648 · brennalu@hotmai.com

President's Page



Greetings BCH,

Summer is not the time to be writing articles for the newsletter! But between recuperating from work parties, preparing for harvest, and planning the next project, I'm trying to focus on how we can increase our exposure to show our many members who are sitting on the sidelines watching or ignoring "What We Do". We are trying to get more trail riders involved with our work parties. Many don't know how rewarding it is to "own" the trails that you have just cleared. One of the ways we've introduced new people is to take them on a pack trip to the back country. This works to introduce them to the beauty of and the solitude that can be had. We definitely need to seek new ways to get more of our members out on our various projects.

During our summer executive committee meeting we discussed ways to increase our membership. We talked about setting our sites on business memberships. We would like to pursue any business owners that we all do business with, whether it is tack suppliers, feed stores, trailer sales, repair shops, insurance agents, or any place we do business. We need all the help we can get to accomplish our goals and objectives. We are all helping these business owners be successful, so I believe we can ask them to help us on our mission! We will be developing some guidelines as to how to go about this new program.

The Executive Committee also discussed the 2015 Lucky Calendar project that Mid Valley unit pursued for two years and has been very successful. We decided that the state

will take on this endeavor for 2015. We will be selling 2500 calendars statewide with each unit being responsible for their share based on membership. It was decided to share the profits with the units on 50-50 basis with the state. This gives the units a generous share of the profits and hopefully they can build their own emergency fund for future endeavors and also bring in new monies to the organization.

It seems that there are always new challenges facing BCH. The latest is the Sierra Nevada Yellow Legged frog and the Yosemite Toad. The US Fish and Wildlife Service have announced plans to add these two species to the Endangered Species list. Recently at a Congressional Hearing in Sonora called by Congressman Tom McClintock, it was stated that these species inhabit about 2 million acres of the Sierra Nevada. Our concern is if this frog and toad are added to the list what happens to the access we have to those lands that have the critical habitat. Will they close off the access to those lands as they have on the PCT in Southern California? Mid Valley Unit is actively engaged in trying to get some answers to these questions, but we may need help from all the units, we'll keep you posted!

Remember that our state Board of Directors will meet on October 5th in Visalia. If you have concerns that need to be brought up, please get them to me ASAP so we can set the agenda. This meeting we are going to try a different format. There will be no separate meetings for Public Lands and Education. We will all meet together from the beginning so that all will be informed of both agendas. Then the usual BOD meeting will follow.

Get out and enjoy the trails you have cleared. . .

Dennis M Serpa



BCHC UNITS

How did you celebrate The Back Country Horsemen of America's (BCHA) 40th Anniversary? Let me know & I will put your story in the next issue of BCHC News.

Email me at BCHC.News@gmail.com

BCHA

BCHA



BCHA

Back Country Horsemen of America Announces New Chairman

By Sarah Wynne Jackson

Back Country Horsemen of America has been keeping horses on America's trails for 40 years. An organization that began with a handful of members in one western state has spread clear across the nation to include 26 states, 11 of which are east of the Mississippi. It seems fitting that the new Chairman in their 40th year is Jim McGarvey, a horseman from Calhoun, Georgia, BCHA's first Chairman from east of the Rocky Mountains.



A Track Record of Success

He comes to Back Country Horsemen of America as an accomplished businessman. As co-founder and CEO of BenchMark Consulting International, Jim built "the smallest company with the biggest clients in the world." Its fifty professionals specialized in bank operations consulting to major financial institutions on six continents, identifying and implementing world class best practices. These clients included 48 of the 50 largest U.S. banks and the lending arms of the 15 largest automakers and other industrial corporations. After twenty years, BenchMark Consulting International was acquired in August of 2000.

Jim served as Executive Director of Auction America Corporation, which grew to be the second largest antique automobile auction company in America, with over a dozen auctions annually across the United States. At age 28, he helped put the company together from scratch, managing day to day operations including advertising, financial settlements, event preparation, and buyer-seller satisfaction. The company even held a thousand car auctions in Los Angeles that was recorded for television. Auction America, one of whose important shareholders was Russ Jackson, is now part of the historical development of the Barrett-Jackson Auctions as seen on the Speed Channel.

One of Their Own

A trail rider for the last three decades, Jim also takes his new position with a wealth of leadership experience in Back Country Horsemen of America. It began when he became a founding member and Vice President of Back Country Horsemen of North Georgia and, in the following year, took on

the role of President. With the help of BCHA leadership and alongside numerous trail riding organizations, he led a several months-long effort of positive discussions with the US Forest Supervisor to reinstate cross-country access to horses in the one-million acre Chattahoochee-Oconee National Forest.

Jim then became Chairman of Back Country Horsemen of Georgia, and then served two years as a member of the Back Country Horsemen of America Executive Committee. These progressive leadership roles give Jim a unique understanding of BCHA as a national service organization whose goals benefit individual equestrians.

Plan for a Bright Future

Working with the BCHA Executive Committee, Jim has outlined a plan for moving BCHA into new expanding accomplishments in the next 40 years. This year, Back Country Horsemen of America has over 13,000 members, the highest in the history of the organization. Jim wants to see that number continue to climb. Along with more members, he expects an increase in BCHA's already astounding contribution of volunteer work.

But it takes more than fixing trails and removing fallen trees to keep horses on our public lands. Equestrians need to work with the US Forest Service, speak with our congressmen, coordinate with land managers, team up with other trail groups, and attend planning meetings to be sure horses are included. BCHA folks across the country already do this extensively in many ways, and Jim encourages members to step up their efforts on the local, state, and national levels.

Back Country Horsemen of America groups boast some very skilled crews who spend their own money on equipment, fuel, and travel to put their expertise to work maintaining trails for the benefit of all trail users. BCHA's new Chairman recognizes that those skills are becoming more valuable as federal and state budgets shrink. It would be easier but far too costly to deliver workers and equipment by helicopter to the remote areas that need maintenance. The ability to pack equipment and materials on horses is sometimes the only way in areas where motorized vehicles are prohibited. Jim wants to see more members learning those skills, adding to the skills they already have, and putting them to use where our trails are in most need of repair.

Jim's plan also includes spreading the word about how Back Country Horsemen of America works for you, and for every individual who enjoys our beautiful land by horseback. It's hard to believe, but there are still horse folks who haven't heard of BCHA and all the ways they're keeping horses on trails from coast to coast. Back Country Horsemen of America extends an invitation to equestrians across the nation to join them in protecting our right to ride horses on public lands.

BCHA/BCHC

BCHA Celebrates 40 Year Anniversary & Reports Positive News on Growth



2013-14 Chair Jim McGarvey

With the economic downturn over the past few years, BCHA is like most organizations and lost some membership. But our BCHA has a made a great comeback. As we celebrate our 40th Anniversary, we can also celebrate a near record membership level for the year ending in 2012 - over 13,000, membership is coast to coast with twenty-two state organizations and four affiliate state organizations

Information from the BCHA Summer 2013 Special 40th Anniversary Issue

Back Country Horsemen Help With Fire Recovery in Wilderness

Photos & story submitted by Alexandra Urza -

Members of the Backcountry Horsemen of California lent their expertise and horsepower - literally - when the BLM's Surprise Field Office was faced with a daunting task of replacing miles of wildfire-damaged fences in the High Rock and Little High Rock Wilderness areas of Northwest Nevada.

Wilderness management regulations prohibit the use of mechanized equipment and the terrain is steep and rocky in the project area. The conditions were well suited to horses and mules, including formerly wild animals adopted through the BLM's Wild Horse and Burro Program.

Working over three days, from June 14 through June 16, 10 members of the BCH High Country Unit used 21 horses and mules to haul more than 40 loads into project sites. More than 3,000 pounds of wire - barbed, smooth and woven - were hauled along with fence posts, steel pipe and fence stays. The teams then hauled old fencing material out of the wilderness.

Other volunteers traveled on foot to help load the horses and scout the best routes into the project area. The project is a 6.5-mile fence line that separates two livestock grazing allotments and serves as the boundary for the High Rock Herd Management Area for wild horses.

In addition to the volume of material that needed to be moved, the project's sheer distances posed challenges. The fence project was two miles from the staging area, and the staging area was more than three miles from camp. It made for long and grueling days for the volunteers and stock. Most importantly, there were no injuries to people or their animals.

The project was part of the field office's work to repair damage from last summer's Lost Fire that burned about 61,000 acres. Of that acreage, about 23,000 acres were in the two wilderness areas. Repair of the fences is critical to protect the burned areas from livestock and wild horse grazing until the plants recover.

Alexandra Urza
Natural Resource Specialist
Bureau of Land Management
Surprise Field Office

From BLM California News.bytes, issue 585 - <http://ht.ly/mBBB2>



Photos by
Alexandra Urza



BCHC

FALL STATE BOARD MEETING October 4-5, 2013 , VISALIA

The upcoming Fall State Board Meeting and election of officers will be held in Visalia at the Holiday Inn Conference Center, Friday and Saturday, October 4-5, 2013 .

Holiday Inn Hotel and Conference Center
9000 West Airport Drive, Visalia 93277
Special BCHC price: \$79/night + tax.

Let the hotel know it is for the Backcountry Horsemen meetings.
Reservation phone #: 1-800-465-4329

Directions:

Take Hwy 99 to the Visalia exit. The hotel is literally right there on the cusp of Hwy 198 and 99.

Meeting Schedule:

Executive Committee Dinner Meeting: Friday, October 4, Pine Room
Dinner: 6:00pm,-10:00pm (dinner menu and RSVP sent in the 45-day mailing)

Public Lands Meeting+: Saturday: October 5, Plaza Room,
9:00 - Noon, pre-ordered lunch available (info sent in 45-day mailing)

Education Committee Meeting+: Saturday, October 5, Plaza Room,
9:00 - Noon pre-ordered lunch available (info sent in 45-day mailing)

Board of Directors Meeting: Saturday, October 5, Plaza Room,
1:00 - 5:00pm.

+Education and Public Lands will be meeting together this year

*Directors will receive more details in the 45-day notice packet.



Hotel's website is: www.visaliaca.holiday-inn.com

OBJECTIVES AND PURPOSE of the BACKCOUNTRY HORSEMEN OF CALIFORNIA (from the BCHC Bylaws)

- To improve and promote the use, care and development of California backcountry trails, campsites, streams and meadows; to advocate good trail manners.
- To promote the conservation and utilization of our backcountry resources in concert with livestock transportation.
- To keep the backcountry trails and forage areas open to horsemen on all public lands.
- To keep current information before the Corporation membership and its local Units regarding new legislation or management plans related to government regulations of the backcountry.
- To support or oppose new proposals, plans and restrictions as related to the interest of horsemen and those persons interested in recreational stock use and enjoying the backcountry.
- To promote the interest of people who, due to health or physical factors, need transportation other than by foot on backcountry trails.
- To promote public awareness and interest in the historical aspect of horsemen and stock in the backcountry and to help educate backcountry users on ways to use the trail and forage in a manner that conserves the backcountry resources.
- To assist in keeping the public informed of the vital need for a clean backcountry.
- To promote a working relationship with and keep the work and interests of the Corporation before our local, state and federal officials.
- To assist in the formation and continuation of local Units to carry out these purposes

GET INVOLVED, DO YOUR PART

DON'T FORGET: The BCHC Executive Committee will no longer send out membership renewal verification "green slips" via regular mail. Instead, each unit president & membership chair will get a personal email from the BCHC Membership Chair (Chip Herzig) with each units' data AND it will be put on the web page in the password protected section.

BCHC ~ Education

NEWS FROM OUR YOUTH COORDINATORS

The Jr. BCH/4-H youth met on June 8th at Magnolia Bar to enjoy a trail ride and picnic lunch. Riders headed out at 9am, and didn't seem to mind the 106 degree high that was predicted. Since the trails at Magnolia Bar are shadier than Cronin, most of the ride was comparatively cool. Eight juniors and three adult leaders participated, and the ride to the American River picnic area was absolutely spectacular, with valley views of the river below. All the horses enjoyed wading in for a long cool drink before snoozing while their riders had their lunch. Some parents were waiting in the shade back at the trailers, and were undoubtedly happy to see everyone return, smiles all around.

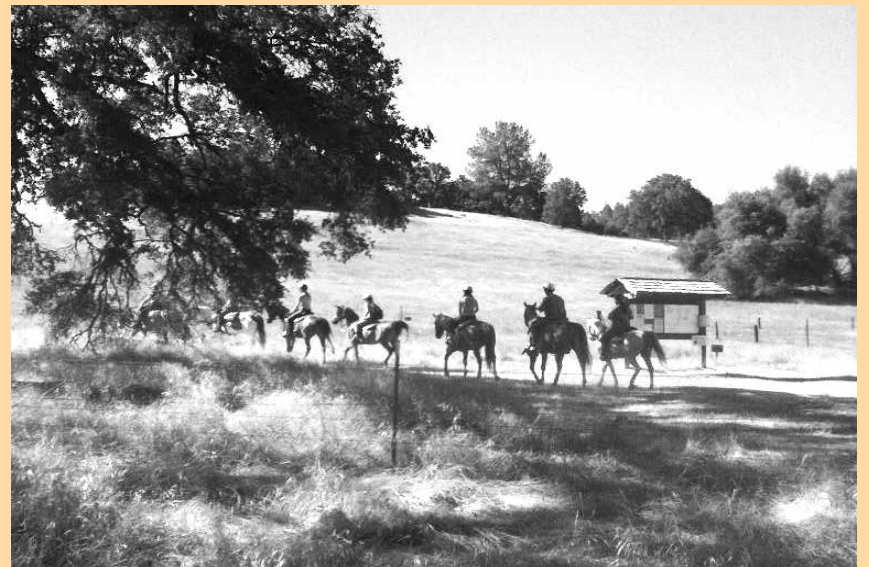
While most 4-Hers are in their "off" season, summer is the busiest season for BCH. Youth are encouraged to attend the third weekend rides with their families, and all who are interested in participating for the 2013-14 year are urged to contact Cathy Andrews at (916) 358-6179, or email her at catforestandrews@gmail.com

Planning for the coming year is in progress, and Cathy has been awarded a grant for a summer youth GU/LNT (Gentle Use/Leave No Trace camping techniques) horse camp, which will be planned annually.

Did you know that the Jr. BCHC program has a huge "Draft" binder (over 440 pages) of suggested policies and procedures for creating a Jr. BCH in each unit? The draft contains extensive Gentle Use/Leave No Trace camping lessons and more curriculums that Jr. Leaders can draw from, in addition to whatever they may want to prepare and teach on their own. Jacque Murphy will be making this available on our new website. Now we just need an insurance program that will adequately cover camping in the back country with our youth--and the youth! What is your unit doing with youth?

The Mother Lode Unit is partnering with their county 4-H to do a GU/LNT project together, using the 4-H insurance umbrella. While summer is the busiest season for BCH, it is the "off" season for most 4-Hers, who follow the school year. The El Dorado County 4-H Trail Riding and Back Country Project is beginning now for 2013-2014, but most participation won't scale up until the end of summer. The Jr. BCH-MLU has been awarded a grant from BCHC for a horse camp to teach GU/LNT skills, and plans are underway for the coming summer. Youth and their families have also been invited to participate in trail maintenance and the building of a new horse camp in the Sierra near Kyburz this fall.

The Mid Valley Unit held their first youth horse camp on June 28th-30th at Kerrick Corral, located in the Stanislaus National Forest just off Highway 108 in the Pinecrest area of the Sierra Nevada. Mid Valley used BCH of Idaho's forms as a guideline, and created an introductory letter and application, camp supply lists, liability and release forms, health information forms, schedule, and menu for the weekend campout. Participants were given a t-shirt with their name, "BCHC Mid Valley Youth Horse Camp", and the unit logo on the back. Dennis Serpa contacted Josh Bloom of Aspen Meadow Pack Station, who agreed to work with Mid Valley and provide pack station horses for the safe participation of the youth, while camp committee members, including Nurse Jackie Williams, Dave Moser, Doug and Cathy Dollarhide, Karen Lopes, Vicki Whistler, Valerie Perry, John Marshall, Tina MacLauchlan, and Larry Wood rode their own mounts.



Activities for the weekend included introductory games, swimming, GU/LNT instruction, a Cowboy Kazoo contest, camp logistics and expected manners, guitar music and singing by the campfire, storytelling, a talk on the history of the Wilderness, LOTS of riding, presentations on how to properly fit a packsaddle, balance and pack loads, tie a box hitch, and much, much more. A very fun and educational weekend was had by all!

Cathy Andrews & Jacque Murphy
BCHC Youth Education -- Co-Chairpersons

BCHC

SPONSORS

Star Milling Co.
 www.starmilling.com
 909.633.1705
 Stacy@starmilling.com
Integrity

A sponsor of the 2015 Ranzovans



P.O. Box 248 • Bishop, CA • 93515
(760) 872-8331

McClintock Saddle Works
 www.mcclintocksaddles.com

NORCO RANCH OUTFITTER'S
 SUPPLYING HORSE & RIDER FOR OVER 50 YEARS
 WE CARRY THE LARGEST SELECTION OF TACK AND SADDLES IN THE INLAND EMPIRE
(951) 735-4130

Thrifty Horse



(951)280-0294
 www.ThriftyHorse.com



SPONSORS



"Individualized Chiropractic Care"



Family Owned & Operated Since 1989
Double D Rentals
 Equipment, Tool & Party Rentals
 www.doubledrentals.com

Heaven's Ranch LLC
 WORKING CATTLE RANCH
 Horse Rescue
 500/33 New-Pony
 BOARDING STABLES
 TRAINING FACILITY
 SPECIAL EVENTS
 3300 Old Woodbine Rd.
 Chico Hills, CA 95720
 (530) 897-4920
 www.heavensranchllc.com
 www.heavensranchllc.com



LOMA LINDA UNIVERSITY

**SUPPORT
 OUR
 SPONSORS**

BCHC

IN REMEMBRANCE

I must tell you of the passing of Buck Ward. He served Backcountry Horsemen for many years. You could count on Buck being present at our unit meetings, BCHC State Board Meetings and Rendezvous. He was a true gentleman and a very caring soul. And he will be missed by so many.

From his wife Joyce:

Edward "Buck" Ward, Sr. a teacher at Granite Hills, passed away on July 6, 2013. In 1970, he settled in El Cajon and began his long teaching career at Granite Hills. His 25+ years as an Eagle encompassed English, Drama & Western Lit. classes. He was also the Speech coach and Equestrian adviser. He retired in 1996 with over 30 years in education.

He enjoyed raising Peruvian Paso horses & horsemanship. He was an active member of the Back Country Horsemen's Association and loved doing trail maintenance in the Cuyamacas. Buck was an avid square dancer & coached youth sports through the Boys' Club for many, many years. Buck loved to spend time with his family & was an inspiration to all who knew him. He was truly an advocate for the public education system of this country. Although he came from humble beginnings, he was truly a self-made man. None of this would have been possible without his values and the importance he placed on education. He was a shining example of what can be achieved thru the educational process.

He is survived by his wife Joyce, sister Charlene, brother Ronnie, sons Buck Jr. & Brad, step-son Malek, grandchildren Alicia, Cody & Samantha, and niece Margie. Donations in Buck's honor can be made to the Golden Eagles Scholarship Fund.

Golden Eagles Retired Staff Scholarship
Fiscal Dept.

Grossmont Union High School District.
1100 Murray Dr.
El Cajon, CA 92020



I also must tell you of the passing of another comrade, past president and true supporter of this unit, Levi Lertique. Levi passed away of a heart attack over the Memorial Weekend. He



Levi on Flash

had moved over to Arizona a couple years ago to be near his family. He was enjoying a part time job at the local library and riding his horse Flash. You may remember him helping out at the ACTHA Ride we held at Los Peñiquitos Canyon. He was the one clutching the big pink rabbit! He too, will be remembered fondly.

Via Con Dios, dear friends.

Contributed by Cheryl Wegner BCHC-SDU



Public Lands

2013 Rendezvous Sponsors

Star Milling

Rock Creek Pack Station

Packing

McClintock Saddles

~

Thank You to the Supporters of
the 2012 Rendezvous

Rock Creek Pack Station Packing

Hawes Farm Supply
(Everything for the Farm)

Maverick Outfitters

Please support our benefactors



MAIL YOUR BCHC MEMBERSHIPS TO:

BCHC Membership
PO Box 535
Beaumont CA 92223



Education

Unit & Local News

Mule Days 2013

MULE DAYS WINNERS

Submitted by Corky Layne & Cheryl Kaiser- MLU

Congratulations to the Rock Creek Pack Team for winning "World Champion Pack Team" at 2013 Bishop Mule Days. To attain this title, the team participated in team packing, several "scrambles," a trail course with packed mules, and the "Mystery Packing" event. Great job guys!

The team is comprised of Bryan Kaiser, Andy Assereto, Tyler Knowles, and Cody Klein; all very competent packers for Rock Creek. Bryan and Andy are members of Mother Lode BCHC, and Rock Creek has generously donated trips to our Rendezvous Raffles.

Additionally, Bryan Kaiser won the individual "World Champion Packer." To win this he participated in the individual Box Hitch and Diamond Hitch events (timed) and the individual scramble and packing events. He's now back at work at Rock Creek. Great Job Bryan!



The team is comprised of Bryan Kaiser, Andy Assereto, Tyler Knowles, and Cody Klein.

Something New at Mule Days Submitted by Chip Herzig SGPU



Mule Days is held each Memorial Day weekend in Bishop, CA. It is a gathering of all things mule plus all the folks that cherish these special critters. But this Mule Days was a little different this year; Kids and mules were the focus from Thursday until the culmination on Sunday with the kids packing contest. Throughout these days the kids participated in the Passport booklet adventures where each page of the book had them going to different spots on the fairgrounds and learning something that earned them a stamp on that particular page. The booklet's title is "*I want to be a packer*".


Several BCHC units participated in these events that started with the school days demo on Thursday out in the main arena where one of our own trainers, Jerry Tindell, showed the kids how to read a mules posture, how to approach a mule or in general how to be around mules safely. This was followed immediately with a trip back to school but I bet not much was accomplished for the rest of the day as the kids wanted to be back playing with the long ears.

All day Friday and Saturday we BCHC'ers who manned our booth were bombarded with kids learning to tie the box hitch on our iron mules as fast as they could go. They were practicing for the contest on Sunday with live animals. We also had highline demonstrations. The highline design and purpose was one of their questions in the booklet. Another big draw was we set up a cross-cut saw demo where the kids and parents learned how to saw a "cookie" off the end of our logs. Don't know who was more enthusiastic with this the parents or the kids. We also had a large display of camping mistakes that tie to our Gentle Use principles. This monster display was a fun test for the kids to pick out the mistakes which most kids figured out pretty quickly. We then showed them the correct way to camp with our set-up of a Gentle Use camp right next to the poster with the mistakes on it.

This mule day celebration went by so fast and it was so enjoyable. I know the kids learned a ton of stuff and one can only hope that as they grow they will continue in the "*I want to be a packer*" boots.

Horse Expo 2013

BCHC Membership Application

- NEW MEMBERSHIP APPLICATION Backcountry Horsemen of California
- RENEWAL APPLICATION 
- CHANGE - () PARENT UNIT () ADDRESS/PHONE/EMAIL () MEMBERSHIP TYPE

MAIL TO:
 BACKCOUNTRY HORSEMEN
 OF CALIFORNIA
 PO BOX 515
 BEAUMONT, CA 92223
<http://www.bchcalifornia.org>

DCTR (YOUR MEMBERSHIP NUMBER) _____

*** NEW MEMBERS WILL BE ASSIGNED UNITS BY MEMBERSHIP COORDINATOR*

PARENT Unit Affiliation: (Select and CIRCLE ONE Unit as your Primary Unit Affiliation)

- | | | |
|-------------------|-------------------|--------------------|
| Antelope Valley | Mid Valley | San Joaquin Sierra |
| Eastern Sierra | Mother Lode | Santa Ana River |
| High Country | North Bay | Sagehen |
| High Sierra | Oklone Baldies | Shasta Trinity |
| Kern River Valley | Redbank Riders | Sierra Freepackers |
| Kern Sierra | Redwood | Staircase Country |
| Lake-Mendo | San Diego | Sutter Buttes |
| Los Padres | San Geronimo Pass | Top of the State |

Donate to BCHC Education Fund?
Tax Deductible

Packer	\$10.00
Mule Skinner	\$25.00
Other (Write in)	\$ _____

MEMBER'S NAME - *No Business Names; Please Print Clearly* _____ SPOUSE/MEMBER'S NAME - *MUST SHARE SAME ADDRESS* _____

ADDRESS _____

CITY _____ STATE _____ ZIP _____ PHONE () _____

EMAIL ADDRESS _____

Make Checks Payable to: BCHC CHECK # _____ DATE SUBMITTED: _____

TOTAL ENCLOSED: \$ _____

BUSINESS NAME - *DONATIONS ONLY*

PARENT UNIT MEMBERSHIP TYPES: (CIRCLE ONE)

Individual \$45.00* Family \$85.00* Benefactor \$100.00 Patron \$250.00 Mt Whitney \$500.00

**-BCHC shares portion of dues with Backcountry Horsemen of America*

ASSOCIATE MEMBERSHIPS: AN ADDITIONAL \$15.00 PER UNIT IS ADDED TO YOUR PARENT UNIT DUES. ASSOCIATE MEMBERSHIP UNIT AFFILIATIONS MAY NOT BE FOR THE SAME UNIT AS YOUR PARENT UNIT.

Associate Membership for: _____ \$15.00/unit (Unit Name (from above list))

Associate Membership for: _____ \$15.00/unit (Unit Name (from above list))

Please write additional children on back

Please clip form along dashed line - KEEP BELOW INFORMATION FOR YOUR RECORDS

PARENT BCHC MEMBERSHIP TYPES
 Individual, Family (Shared*), Benefactor, Patron, and Mt Whitney. A Parent Membership is affiliated with a single Local Unit. BCHC members may NOT hold more than one active Parent Membership.

A SHARED Membership is for two adults with differing last names, each sharing a common address.

ASSOCIATE MEMBERSHIPS
 These special Memberships are only available to persons already holding Parent BCHC Membership. No one may sign up for an Associate Membership without 1) having registered one of the Parent Membership types, and 2) having selected Parent Unit affiliation.

- * You may sign-up for as many Associate Memberships as you like.
- Associate Memberships may also be initiated at any time during the term of your Parent Membership.
- Associate Memberships must expire concurrently with the Parent Membership, and are renewable only at the time of renewal of the Parent Membership.

Complete information regarding BCHC Membership is available on the MEMBERSHIP page at: <http://www.bchcalifornia.org>

KEEP FOR YOUR RECORDS
 I SUBMITTED AN Application Form for:

<input type="checkbox"/> Individual Membership	\$ 45.00
<input type="checkbox"/> Family (Shared) Membership	\$ 85.00
<input type="checkbox"/> Benefactor Membership	\$100.00
<input type="checkbox"/> Patron Membership	\$250.00
<input type="checkbox"/> Mt Whitney Membership	\$500.00
<input type="checkbox"/> Donation - Packer	\$10.00
<input type="checkbox"/> Mule Skinner	\$25.00
<input type="checkbox"/> Other (Write in)	\$ _____
<input type="checkbox"/> Associate Membership	\$ _____
Total Remittance	\$ _____
Check Number _____	_____
Date Mailed _____	_____

Questions: Contact membership@bchcalifornia.org



Unit News

Chamberlain Meadow Horse Camp Work Parties June 16 – 23 & July 6 – 13, 2013 Progress Report FS Agreement 13-PA-11051500-015

Story & photos by Joe Kaminski & Toby Horst - See more photos on page 1

The 2013 Chamberlain Meadow Horse Camp work parties was the largest challenge, in recent years, the San Joaquin Sierra Unit has ever tackled in a building project. Our Unit has built trail head corrals, walls and other horse camp projects, but never an ADA rated toilet several miles away from the trailhead and having to mule pack 10 sheets of plywood, 65 - 2 by 4, 6, 8in studs and roof supports, along with vent pipes, and wire mesh to field build a semi permanent toilet at the Chamberlain Meadow camp site. It took over 20 mule string loads to get the materials to the site, as well as packing in a generator to keep the cordless tool battery packs charged.

The first week there were 14 people off and on at the site, with 14 mule loads of kitchen, tents, personal gear, food, cordless tools and shovels/chainsaws packed to the site. The logistics alone was mind boggling and having to develop ways to carry the many loads of materials on mules was another challenge for the work crew. There was not a break in activity the entire first week and the plywood sheets had to be cut 16 inch widths 8 foot long to allow the mules to turn their heads to make the trail corners. These were just a few of the challenges. At the end of the first week the Toilet was erected and ready for use without the finishing touches, painting and roof trim. Because of the many seams 1 by 4in fir strips had to be brought in the second week along with 9 gallons of paint, caulking and foam to seal all the openings.

The second week there was 12 workers off and on during the week, completing the toilet for permanent use, as shown below.

The Chamberlain Cow Camp Meadow was originally surrounded by barbwire and metal T poles, 2/3rds of this material were removed several years ago by the SJSU and piled at the Cabin site for later removal. Part of the this work project was to haul the barbwire to the jeep road, 1-1/2 miles, so the four wheel drive clubs could haul off the mountain. During both weeks, number of mule string loads removed all the barbwire that was at the cabin leaving only T poles for future removal.

This may seem like a small project but it was a challenge for everyone and a sigh or relief when completed. We hope that our Unit will use the site and enjoy the Backcountry experience.

The pit for the toilet was dug by 4X4 club member **Ed Fitzpatrick** who proved to be instrumental in the building of this facility. Many thanks to the members of our work parties;

First Trip June 17 thru June 23, 2013

First Trip Participants:

Toby & Katie Horst, Gary & Fredi Chrisman, Joe & Carol Kaminski, Randy Witt, Sandy LaSpada, Peter Parkin, Jim Dixon, Everett Hannah, Warner Dozier, Bob Skinner (Los Padres Unit), Muriel Holland, Ed Fitzpatrick (Fresno 4 Wheel Drive Club) & Cara Peterson

Second Trip July 7 thru July 13

Second Trip

Participants:

Toby & Katie Horst, Muriel Holland, Joe & Carol Kaminski, Jim Dixon, Peter Parkin, Warner Dozier, Fredi Chrisman, Ed Fitzpatrick (Fresno 4 Wheel Drive Club), Sandra LaSpada & Drew LaSpada



Packing up to pack in



The finished ADA rated toilet

Unit News

Denise Robinson - Dutch Oven Cooking

Sierra Freepackers Recon 77 Corral



Standing: Mary Odell, Susan Hogelund - Sitting left to right: Sandy LaSpada, Marcee Hansen, Cathy Miller, Linda Sadler and Denise Robinson. With Mace and Otto

After receiving a BCH Education Foundation and the DEW Foundation grant, the Sierra Freepackers were able to purchase trail tools and a pair of approved bear proof panniers. On July 18 seven members of Freepackers (this turned out to be an all female group) drove up to Granite Creek where member and Wilderness Rider, Denise Robinson help us prepare for a recon trip to 77 Corral using our new panniers.

The meadow at 77 Corral is a public meadow with a drop fence. Since the big blow down of 2012 the meadow fence had not been put up due to damage. Our trip was to check out what all needs to be done to get the fence back into shape.



Denise Robinson organizing the loads

We started to pack up the dunnage to taken in on Thursday afternoon and completed it on Friday morning. We all worked



Denise Robinson and her string followed by Mary Odell and her all Appaloosa string-2 mares and one mule, followed by Marcee Hansen at the Granite Creek water crossing

together to get the four pack animals loaded and to put into use the new set of bear proof panniers that we had received from the grant money. For Mary's mare Shadow this was to be her first real pack trip and she did an awesome job.



New bear proof panniers

Denise and Mary with their strings on the bridge at Sheep's Crossing on the San Joaquin River



Unit News

Sierra Freepackers Recon 77 Corral *(cont'd)*

We left Granite Creek on Friday morning ahead of schedule and rode the historic Mammoth Trail across Sheeps Crossing on the San Joaquin River to the camp area near 77.

The seven members participating were Linda Sadler, Marcee Hansen, Cathy Miller, Susan Hogelund, Sandra LaSpada, Denise Robinson and myself.

The trail consists of some flat riding but lots of down, down, down and then up, up, up out of the San Joaquin River canyon. We arrived safely, where pleased to find the camp stream still running and the meadow with enough pasture to keep our animals for the time there. We set up camp and explored the meadow and surrounding area as our stock grazed and rested before being high lined for the night.

On Saturday morning we walked the twenty acre fence line, took pictures and noted posts and wire to be replaced and trees to be cut and trimmed. We hope to get back in to the meadow in August.

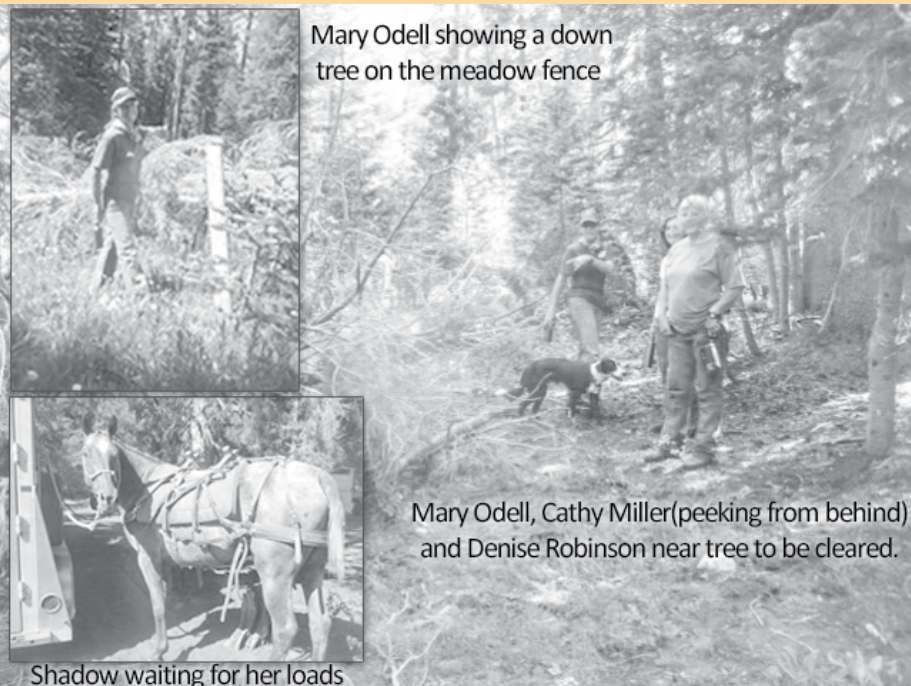
On Saturday afternoon we took the trail as it continues towards Reds Meadow and the Devil's Postpile area. More climbing and finally we came to part of the trail where we had planned to turn around near the top of the area called the Granite Staircase and this was our view of the Minarets. It was quite warm and humid but we experienced no rain...too bad

as it so dry that we could not have a camp fire during this trip. Sunday morning we efficiently packed back up and got our start back to Granite Creek. We were happy that the weather was cooler. I don't think any of us ever put on our jackets even though we were at 8000+ feet.

All the members got more experience packing and learning about Leave No Trace and Gentle Use. We left the camp in much better shape as we removed trash found stuffed into the forks of trees and trash left in the fire pit. We repaired an area right on the creek where a tree was totally girdled by what looked like a one legged hobble. We worked on getting the area to look back to a more natural state by raking and bringing the dirt and duff back up around the tree. The areas we high lined in were put back to their original condition after we removed our lines thanks to Cathy Miller and her rake.

We want to thank the BCH Education Foundation and the DEW Foundation for the funds to purchase the bear proof panniers. We felt more that our food was more secure and we did enjoy having access to another table in camp.

Article by Mary Odell, Pictures by Linda Sadler and Mary Odell



Mary Odell showing a down tree on the meadow fence

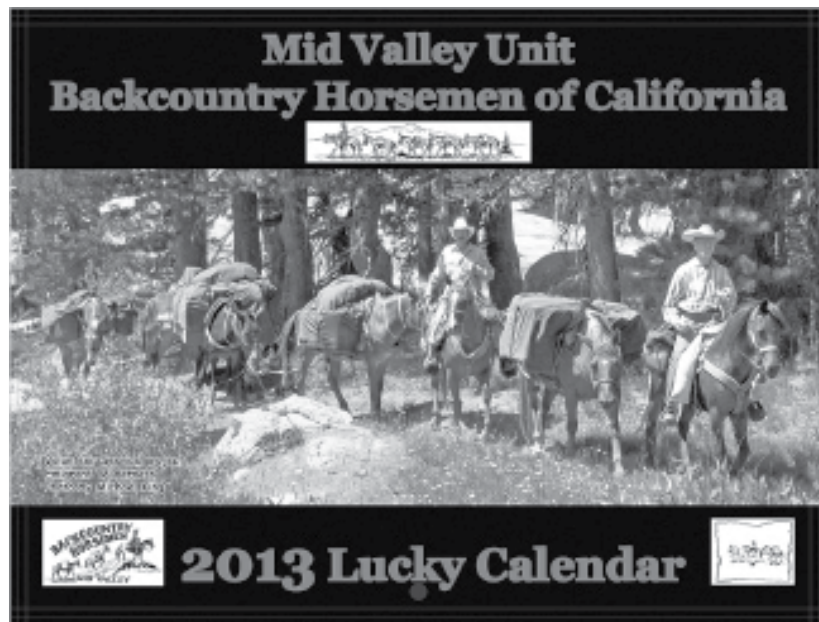
Mary Odell, Cathy Miller(peeking from behind) and Denise Robinson near tree to be cleared.

Shadow waiting for her loads

Unit News

Unit News

MID VALLEY UNIT LUCKY CALENDARS



Actual calendar is in color. BUY your calendars today. Call Michael at (209) 606-8323 or email: mickngig@sbcglobal.net or Kathy at (209) 765-4923 or email: runningzranch@gmail.com

Upcoming Events

News You Can Use

Tax Deductions for Volunteer Expenses

Contributed by Chip Herzig- SPGU - Membership Chair

Did you know that you can deduct volunteer-related expenses on your tax return? If you keep records of your direct out-of-pocket expenses then there are deductions that you may be able to take advantage of:

Travel expenses:

You can deduct unreimbursed, out-of-pocket expenses that are directly related to the use of your vehicle when volunteering. You can choose to deduct the actual expense of gas or use the standard mileage rate set by the Internal Revenue Service. Additional out-of-pocket travel expenses that can be deducted include air, rail, bus and taxi travel, necessary lodging and meals, parking fees, and tolls.

Administrative expenses:

If you pay for some of the charity's expenses and are not reimbursed, these costs may count as charitable deductions. For example, if you purchase stamps for mailings or office supplies for administrative purposes.

What cannot be deducted?

Volunteers are unable to deduct the value of their time or services as well as any personal, living, or family expenses incurred while volunteering, such as the cost of child care. As you are evaluating your out-of-pocket expenses to determine if they are eligible for deductions there are several things to keep in mind:

- The out-of-pocket expenses must be unreimbursed and directly connected with your service.
- Volunteers who deduct out-of-pocket expenses must keep adequate records that prove the amount of the expenses.
- A formal agreement isn't necessary, but a brief letter or memo from the 501(c) authorized charity, such as the accompanying appreciation letter, stating that you are acting as a volunteer to further the purposes of the group is recommended.
- If you have an out-of-pocket expense that is \$250 or more, you need to have a written acknowledgement from the charity describing the services provided and whether any goods or services were received from the charity in return. The \$250 limit is for one payment, not for combined expenses. For example, if you spent a total of \$300 in the course of volunteering but the payment was split (e.g. \$200 for gas and \$100 for food and other expenses), you would not need the written acknowledgement. But if you spent the entire \$300 on a single item, like a plane ticket, you would need to present that receipt to the charity and get a written acknowledgement.

You can learn more about volunteer tax deductions through the IRS Publication 526, Charitable Contributions. It's always a good idea to check with your tax advisor on this or any issue concerning your taxes.



News You Can Use



Logan Coach Rebate Program

Exclusive to BCH Members

As a special rebate for Backcountry Horseman members, Logan Coach will give the following rebates/donations when you purchase a new Logan Coach trailer:

- .5% of Retail Price Paid Donated to BCH State Organization
- .5% of Retail Price Paid Donated to Customer's Local BCH Chapter
- .5% of Retail Price Paid as Rebate back to Customer

Ask Your Logan Coach Dealer for details.

See the 2012 Logan Coach Line at www.LoganCoach.com

All you will need to get the rebates sent out is a copy of the invoice for the Logan trailer you purchased from the retail purchaser & what your unit & state is.

You can send that directly to Steve Hales ~ Logan Coach
Phone (435) 752-3737 Fax (435) 752-3756

The deadline for submissions for the
WINTER EDITION

of the Backcountry News is:

December 19, 2013

Send submissions to BCHC.News@gmail.com

or mail to: Rhonda Strickland

Restless Designs

27150 Shadel Rd. SPC 119, Sun City, CA 92586

Unit News

Barbara Knowles' Stitch Design

By Michael King, ~ Mid Valley Unit

Over the years, I would imagine most of you have purchased, or at least have seen, the beautiful green and tan BCHC jackets sold for so many years at Rendezvous by the Antelope Valley Unit. These jackets have always been 'must have' items for our members who wear them proudly to advertise their membership in Backcountry Horsemen of California.

Unfortunately, Antelope Valley Unit decided to retire from the apparel business, leaving us with no ready source for the jackets emblazoned with the beautiful BCHC pack string logo. What to do? Well, as the old adage goes, "When one door closes, another one opens."

I would like to introduce Barbara Knowles, the owner of "Stitch Design,"

a custom embroidery business. A while back, Barbara began to include our BCHC Rendezvous in her circuit of major shows and



events she attends annually. These shows include the National Finals Rodeo in Las Vegas, Salinas Rodeo, Bishop Mule Days, Red Bluff Bull Sale, Cow Palace, Grand National and Pacific Coast Cutting Horse events. Soon, people attending Rendezvous began to notice Barbara's business and the quality products she turns out. The quality is so good-and the variety so great that Barbara was asked by BCHC to become the official supplier of Backcountry Horsemen of California apparel. To our great benefit she agreed.

Barbara travels to her various event appearances in her large work trailer equipped with four embroidery machines and all of the ancillary equipment needed for on-the-spot jobs. There is always an ample display of apparel to choose from at her booth. Barbara's main production facility, however, is located on her remote 700-acre cattle ranch, "The Mountain Pass Cattle Company," near Jenny Lind, CA, over 40 miles northeast of Stockton. The ranch is so remote that it is well beyond the reach of utility company power.

In the age of 'green products,' there are none greener than those of Stitch Design. For you see, the entire operation, including Barbara's home, is run totally on solar power. For those infrequent gray days when the solar system is not operating, Barbara has a diesel-powered generator for backup.

In a spacious and well-stocked shop, among other tools of her trade, is an embroidery machine complete with 12 individual embroidery heads enabling Barbara to turn out large production jobs quickly. Her well-organized wall of thread spools is a colorful treat for the eyes. Even more boxes of thread inventory are stored under the workbenches. The ample windows of the shop open up to grass pastures studded with oak trees. These windows also provide great natural lighting for the workshop, reducing energy needs.

Barbara has always had a penchant for sewing, which she began doing as a young child. She pursued this love of craft into adulthood and finally into a business. She fondly and proudly tells of episodes of staying up, sewing all night. Barbara also tells about designing the Long Rider style of jacket. She cut the pattern out 28 years ago on her kitchen floor, using butcher paper for the pattern material. Now,

having been in business for over 30 years, there is little in apparel that Barbara cannot turn out. Besides the BCHC jackets we talked about above, there is a myriad of items available from her shop. Button-down shirts, jackets and vests are some of the main products and are available in a variety of



Unit News

Barbara Knowles' Stitch Design (cont'd)

colors, styles and materials. Many of the products Barbara sells are manufactured in her own facility or are contracted out to local companies.-

Barbara has our BCHC logo in her computer system and can put it on everything from jackets to mantys; all you need to do is ask! Recently, I asked for a vest that looked like our BCHC jackets for those days when I do not need a full jacket. "Do you want a zipper closure or snaps?" began the order questions. After completing



the order form, Barbara went to work and produced a very nice vest that looks just like the BCHC jackets, only no sleeves! At the same time I also had Barbara make up some button-down shirts with the BCHC logo to wear to those 'special events' where I want to promote our organization.

To contact Barbara, call her at 209-786-7150

or email her at stitchdesign@caltel.com. She will be very pleased to help you with your questions or to take your order if you are ready. Also, look for her at one of the outside events she attends annually, or at our own BCHC Rendezvous. There you can see the apparel in person and also try them on for sizing. However you make your connection with Stitch Design I can guarantee you will be pleased with your purchase!

Information

WELCOME, NEW MEMBERS!

The following new members have joined BCHC between

August & December 2012

Antelope Valley	Lynda Fenneman April S. Frisbey & Tim Golden Bradley R. & Emily Miles
Eastern Sierra	Desiree & Justin Federman June & Dale Schmidt Neta & Jim Snyder Richard & Judy Underwood
High Country	Katherine & Ben Zandstra
High Sierra	Bradley R. & Emily Miles
Kern River Valley	Colleen T. Brun Tom & Lynda Meredith
Kern Sierra	Cheryl & Ted Reese
Lake-Mendo	Dave Lowrie Chris Vallerga
Los Padres	Tracey & Callie Anderson Bob Benton & Sheri Larson Pamela Crouch Carol Darwin Alisa Davis Lori Donnelly Scott Guthrie Cynthia Hoff Christopher & Lisa Huhlhoff Gail Jamieson Bobbi King Jeanne Madrid & Danny Wells Ruth Means Dodie Nugent Michelle Odle Michelle Ratkay Jennifer Robinson Sharon Rosenfeld Lori Shepard-Johnson Shelly Wolfe
Mid Valley	Rose Marie Armendariz Kiki Edgerton DeAnn Edwards Jim & Sue Frier Gail Jamieson Debra & Scott Lewis Tami Peters Alan Serpa Randy J. & Ruthie D. Sims Prabhjot (Joe) Singh Kevin A. Van Dewark Kathryn & Jay Watt Nancy Willmes
Mother Lode	Bartley Baer Dorothy J. Foster Patty Lamarche Linda Lansky & Keith Schoendoerfer Helen & Brent McDermott Lori A. Oldfather Teri Personeni Karen Schwartz Roger Ward Michael & Brooke Wunschel

NEW MEMBERS, *continued*

North Bay	Mark Aguirre & Sondra Wilson Howard & Joki Brusco Amanda Fisher Robel Halima Bill & Laurie Knispel Diane Ricketts Richard & Beverly Sanders M. J. Wickham
Ohlone Riders	Melanie Headrick
Redshank Riders	Eugenie & William Brunner Andrea & J.D. Burns Dana Conklin Mark & Linda Donahoe Beth Grossman Dave Houghland Ken Leach Cary & Jackie Lewis Beth L. Shook
Redwood	Randy Conley Sherrie R. Eaves
San Diego	Sharon Bakun Weston Barnes Jeani Buchanan Gabi Daigneault Roxanne Davis Linda Graham Mark Kukuchek Lina Mendenhall Harold David Patterson Laurie Rains
San Gorgonio Pass	Kimberlie Hall Susan Jackson & Greg Becker Linda Kehler Jay & Lisa Murphy J.T. Tillery
San Joaquin Sierra	Jeanne Bryson Jo Ann Caufield Jan Doyle Rick Evans & Kim Anderson Tom Smart Juanita Fiorello Linda Franklin Bonnie Pearce Patricia & Duane Peverill Donna Reiniche Art Riesgo & Becky J. Balistreri Kathleen Rising Donn & Carmen Sawyer Carolyn Shaffer & Ron Steger Ann Van Zant Kim Watkins Debra & Thomas Winegarden
Santa Ana River	David R. Hebler & Laurentina Rodrigues Lynne Hinman Bill Moser & Marcia Moser-Hirsch
Sequoia	Hollace Miller Glenn & Sylvia Sprayberry Valerie Zera & Jon Meyer

Information

NEW MEMBERS, *continued*

Shasta Trinity	Erica Fruiht & Keith Temple Tracey & Jim Phillips Robert & Kelly Sterling
Sierra Freepackers	Ann & Gary Bates Belinda Lopez-Minera Sharon & Jay Seslowe Carolyn Shaffer & Ron Steger
Steinbeck Country	Trudy Haversat & Gary S. Breschini
Sutter Buttes	Dr An Labarre & Dinah C. Gibbs
Top Of The State	Sandy & Mike McTeer



GoodDining
You Dine. We Give!

Dining to Support Back Country Horsemen of America - BCHA
Your Supporters Can Earn Up To 6% When They Dine


www.goodsearch.com

**THE BCHC EDUCATION FUND IS A
501(c)3 NONPROFIT ORGANIZATION**

A donation in the amount of your choice is tax deductible.

You can now donate easily and quickly, using a major credit card or PayPal.

Simply go to the BCHC website (bchcalifornia.org),

Scroll down to the bottom of any page, press the DONATE button and help us in our many efforts.

THANK YOU!

SAVE TIME AND MONEY BY SHOPPING ONLINE!

Earn **cash back** while shopping from home! Search for deals such as free shipping, instant savings, coupons, and more by visiting www.zamzoo.com/bchc

Some of the key features you'll find on the BCHC shopping website include:

- Apparel and Accessories\
- Automotive
- Electronics
- Health and Beauty
- Home and Garden
- Movies, Music and Entertainment



The Ultimate Shopping Experience!

**Please help to make this exciting new program a success for the
Backcountry Horsemen of California!**

Book all travel at:
www.ytbtravel.com/bchc

Start shopping on-line at: www.zamzoo.com/bchc

IN CONCLUSION: To People of the Horse - Submitted by Mary Odell

For introduction, I'm Roland Cheek. I was in on the beginning of Back Country Horseman--even before the beginning, since BCH actually had its conception in my hunting camp several months before the first group organized.


Some months ago, I advised several folks on my BCH mailing list of a new YouTube show I'd put together called "Kids 'n Horses: A Match Made In Heaven (or Hell)--Parents Choice!" <http://www.rolandcheek.com/kidsnslideshow/index.html> about the importance of starting kids out on older horses. That little presentation received a ton of emails from BCHers all over America who thanked me for clarifying a many-sided problem often encountered by parents hoping for a developing companionship between child and horse.

As a former outfitter and guide in one of America's greatest wildernesses, I learned about horses and how to get the most from each. And I often share with others. For instance, my next "Campfire Culture" blog, to be posted next Saturday (Dec 15) is titled "Into Heads To Reach Hearts" is about winning your pony's trust and confidence. It's an important training blog for the horse-user, so click: <http://www.rolandcheek.com/Newcampfireculture/index.html> during the entire week following Dec. 15.

Also for folks with e-readers (Kindle, I-Pad, etc.) I have a FREE short fiction piece on Roland Cheek's Amazon Kindle page for three days, Dec. 17, 18, & 19: http://www.amazon.com/The-Elysium-End-ebook/dp/B00ACT3NGW/ref=sr_1_5?s=digital-text&ie=UTF8&qid=1355503864&sr=1-5&keywords=roland+cheek

"The Elysium End" is about an old man who feels he has nothing left for which to live deciding to die in his idea of the most beautiful place on God's green earth. Except the ugly mare he rode into that very private Elysium place--the horse he detests (and who he thinks detests him) has other ideas.

Again, that story about an old man and an ugly horse is FREE on Amazon Kindle's Roland Cheek page for three days: Dec. 17, 18 & 19. Thanks for reading and listening. I do good stuff about good horses and good people.



If the thought of an open trail and distance riding intrigues you, contact the American Endurance Ride Conference for their free information packet. It tells it all.

aerc@foothill.net or www.aerc.org or 866-271-2972

Recognition of Special Individuals

THANK YOU FOR YOUR SUPPORT!!

Benefactor Funds are used in a variety of ways to support BCHC's Public Lands activities. Uses of Benefactor Funds may include but are not limited to hiring consultants to perform in-depth reviews, financing special studies and reports, and reducing out-of-pocket travel expenses for those who testify at state and federal hearings.

BENEFACTORS

Antelope Valley	Stephen & Marry Ann Colf Heidi Furer & Latha Hylton
Eastern Sierra	Bill Carter Michelle Layne Vince and Doreen Patrizio James B. and Judy L. Waggoner
High Sierra	Richard and Dena Cochran Dennis and Cathlyn A. Keller Billy J. and Brooke Prewitt
Kern River Valley Kern Sierra	Ken and Betty Finch Boyce 'Buzz' R. & Joann F. Caffee Mylon and Pat Filkins Edith Frick Scott Rogers & Grant Rogers
Los Padres	Robert E. Acquistapace Otis Calef William Chaides and Nancy Kimmell Eve, Sean, Sarah & Jacob Devine Si & Karen Jenkins Richard Renck Glenn and Karen Teixeira
Mid Valley	Karen Barindelli Jay and Elizabeth Barnes Gary A. and Michelle L. Cain Dennise A. Davis Rien and Lieske Doornenbal Lloyd and Susan Erlandson Carol Jo Hargreaves & Larry Schneider Jim Huffman David and Kristine Kraft Bob and Sandra Magee MID VALLEY UNIT - BCHC Dennis M. and Loretta Serpa
Mother Lode North Bay	Ken and Gerry Bourn Mark Aguirre and Sondra Wilson Victoria Harris Alan and Carolyn Mahoney
Ohlone Riders Redshank Riders	Sarah & David Schoen Elaine E. Hill & John H. Schoettler Ken and Allison Renck
Redwood San Diego	Maris Hawkins Allie Heary Tom Shea Lynda & Michael Sterns Sterling H. Wolfe, Jr.
San Gorgonio Pass	Steve and Darla Hanft Susanne Holenstein Ron and Korky Robertson

BENEFACTORS, *continued*

San Joaquin Sierra	John and Jenise Cunningham Toby and Katie Horst Larry Nishma Carol Ann Patterson and Glen Richardson
Santa Ana River Sequoia	Pat and Maia Wolff Laure Stern Jamie Wilson, DVM
Sierra Freepackers Sutter Buttes	Joyce and John Granger Larry E. Kling Corky Layne Ulla Park
Top Of The State	Susan and Buton Bates

MT. WHITNEY

Kern River Valley	Ken & Betty Finch
San Gorgonio Pass	Peter and Diana Kriger

PATRONS

High Sierra	Marty Morehart Karl and Trish Pendegraft
Kern Sierra	Vincent and Donna Zaninovich
Mid Valley	Terri Arington
Mother Lode	Helen and Brent McDermott
Sequoia	Jim and Pat Holly Larry and Jody Young



DO YOU WANT TO START A NEW UNIT?

If there is no unit in your area and you are interested in starting one, contact BCHC Secretary Kaye Bruns for more information.

(661) 944-4927

BCHC Units Around the State

Antelope Valley
 PO Box 84
 Pearblossom, CA 93553
 June Frisbey
 (661) 944-3601
jfrisbey@gmail.com

Eastern Sierra
 202 Sierra Grande
 Bishop, CA 93514
 Florene Trainor
 (760) 872-2215
florenetrainor@yahoo.com

High Country
 PO Box 1672
 Alturas, CA 96101
 Alan Cain
 530-233-4062

High Sierra
 PO Box 4427
 Visalia, CA 93278-4427
 Christine Burns
 (559) 623-2288
casheepmom@yahoo.com

Kern River Valley
 3561 Jeffrey St.
 Lake Isabella, CA 93240
 Larry Cigainero
 (760) 379-5920
larrybchc@aol.com

Kern Sierra
 16347 Stephenie St.
 Bakersfield, CA 93314
 Curtis Harms
 (661) 978-9630
mulerider@prodigy.net

Lake-Mendo
 PO Box 1201
 Lakeport, CA 95453
 Paul Villanueva
 (707) 263-0147
Villan13@pacific.net

Los Padres
 PO Box 1857
 Paso Robles, CA 93447
 William Chaides
 (805) 471-1197
bchaides@tcsn.net

Mid Valley
 PO Box 1709
 Modesto, CA 95353
 Michael King
 (209) 606-8393
mickngig@sbcglobal.net

Mother Lode
 PO Box 2088
 Elk Grove, CA 95759-2088
 Mike Kohlbaker
 (916) 214-6505
4horsen@sbcglobal.net

North Bay
 1055 W College Ave
 PMB 153
 Santa Rosa, CA 95401-5036
 Thor Bodtker
 (415) 328-4545
thunder.t@hotmail.com

Ohlone Riders
 PO Box 5262
 San Jose, CA 95150-5262
 Kathy Woods
 (408) 266-9828
ksmithwoods@yahoo.com

Redshank Riders
 PO Box 383
 Aguanga, CA 92536-0383
 Stacy Kuhns
 (909) 633-1705
stacykuhns@aol.com

Redwood
 PO Box 792,
 Ferndale, CA 95536
 Carole Polasek
 (707) 786-9637
muleride@frontiernet.net

San Diego
 236 Oak St
 Ramona, CA 92065-1952
 Cheryl Wegner
 (760) 788-0354
president@bchcsd.com

San Gorgonio Pass
 28797 Live Oak Cyn Rd.
 Redlands, CA 92373
 Pete Kriger
 (909) 910-4619
pkriegerjr@yahoo.com

San Joaquin Sierra
 PO Box 25353
 Fresno, CA 93729
 John Mikkelsen
 (559) 289-4911
jessecowboy@comcast.net

Santa Ana River
 PO Box 736
 Norco, CA 92860
 Thad Chodakauskas
 (951) 312-0724
ctchod@aol.com

Sequoia
 PO Box 456
 Springville, CA 93265
 Jan Walker
 (559) 310-5794
qhbrat@hotmail.com

Shasta Trinity
 PO Box 287
 Anderson, CA 96007
 Sam Burrows
 (530) 547-5975
sburrows@frontiernet.net

Sierra Freepackers
 PO Box 64
 Oakhurst, CA 93644-0064
 Joyce Granger
 (559) 283-4058
cmj@sti.net

Steinbeck Country (New)
 3116 Lake Dr #32,
 Marina, CA 93933
 Lisa Deas
 (831) 402-7482
muledaze@yahoo.com

Sutter Buttes
 110 Medley Lane
 Oroville, CA 95966-9649
 Bob Gage
 (530) 521-7369
bobgage@wildblue.net

Top of the State
 PO Box 461
 Etna, CA 96027-0461
 Joe Croteau
 (530) 468-2339
jjcroteau@sisqtel.net



Membership Matters

Contact Membership Coordinators, Chip & Linda Herzig. They will be happy to address your questions or concerns.

Chip & Linda may be reached Monday through Friday.

By mail: BCHC Membership
 PO Box 535, Beaumont CA 92223
 Email: membership@bchcalifornia.org
 By toll free phone: (866) 748-2033.
 In 951 area code: (951) 769-3781

Planning a Trip? Use

**BCHC
 EARNS 60%
 OF THE
 COMMISSIONS!**
 For the Latest Deals



go to **www.ytbtravel.com/bchc**

- You will find the same airlines, hotels, rental cars and cruises as on other travel websites!
- You'll get great travel prices!
- Each time you book travel a portion of the travel commissions will go to support BCHC!

It's that simple!

Quality Products by Queen Valley Mule Ranch

Product of the month: How to Communicate DVD - 5 DVD set

This five DVD set is great video from a 2003 "Why Does My Mule Do That?" video. This is not Hollywood. This video series was filmed "live" during the show.

This exciting video was shot at Queen Valley Mule Ranch. You will see Steve work with "green riders" and experienced riders, green mules, spoiled mules and well trained mules. You will see round pen work, halter training, ground training, hitching, trailer fit, problem mules, problem riders, and saddle communication. Steve will teach you how to use your voice, hands, legs, and seat to communicate. Learn how to recognize your mule's body language, tail, and demand. Steve helps experienced riders as well as new riders communicate with their mules. So much information you will have to eat breakfast, lunch and dinner watching these videos!

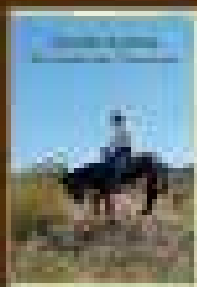
You won't have to go to town to fix mules for a year!

Hey Donkey folks, everything on all of Steve's DVDs works for use with your donkeys.



5 DVD Set \$119.95 - Our price: \$69.95

Free shipping when you mention that you saw it in Mules and More!



Steve Edwards Collection of Instructional Videos

Check out Steve's video series available on DVD for \$24.95. He makes a lot of good videos, which cover topics from Communicating with Mules, to Hitching and Riding, Basics for Handling, Hitching and Packing, to Coat Care, to Tying the Problem Mule.

Steve has 27 different communicating DVDs. Call Steve today to see which DVD will help you communicate!



Heavy Duty or Close Contact Mule and Donkey Saddle Pads

These high-tech mule pads are designed and field tested by Steve Edwards and his partners specifically for mules and donkeys. Problems with unsecured blankets, poor air circulation, and sweating and bacterial bacteria, provide comfort for the mule and rider.

Heavy Duty Pads \$125 plus \$21.95

Close Contact Mule Pads \$95 plus \$21.95



Queen Valley Mule Ranch

Steve & Susan Edwards 602-999-MULE(6853)

1400 W. Flaming Dept. Queen Valley, AZ 85118

steve@muleranch.com

www.muleranch.com

View our entire selection of mule saddles and tack online!



Remember...the more you buy the less you pay so PLEASE today and call Steve at 602-999-6001 and tell him you saw this ad in the voice of the mule and donkey world. Mules and More outgrow!