

INSIDE THIS ISSUE

President's Message	Pg 3
BCHA PUBLIC LANDS RESOLUTION	Pg 4
BCHC EDUCATION FUND	Pg 9
RENDEZVOUS RECAP	Pg 14-15
Membership Application	Pg 17
Unit News	Pg 18

For more BCHC information, see our website:
bchcalifornia.org

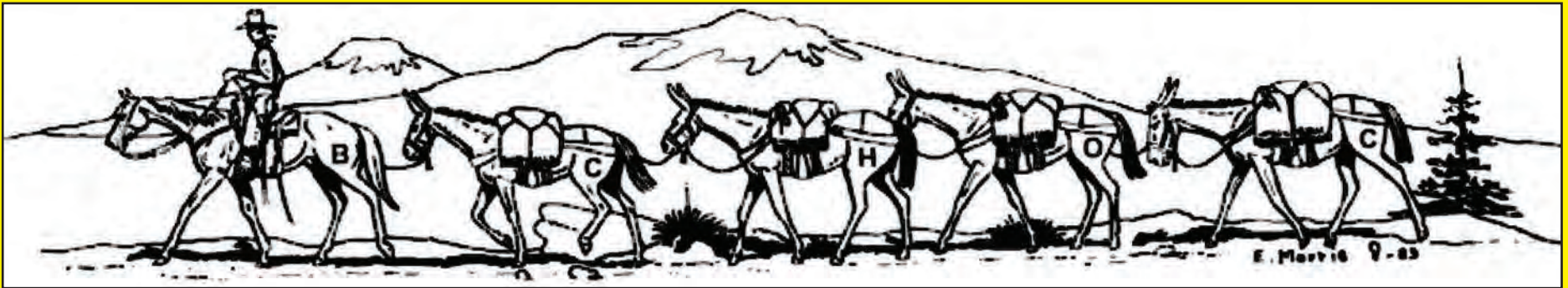
BCHC

BACKCOUNTRY HORSEMEN OF
CALIFORNIA
13061 Rosedale Hwy
Suite G, Box 217
Bakersfield, CA 93314

ADDRESS SERVICE REQUESTED

NONPROFIT
Organization
U.S. Postage
PAID
Manteca, CA
95336
No. 43

The Backcountry News



Volume 26, Issue 2

The Official Publication of Backcountry Horsemen of California

SPRING/SUMMER 2015

29th Annual RENDEZVOUS DATES ANNOUNCED

March 18, 19, 20, 2016
to be held again at the

Calaveras County Fairground

"Working Together to Save Our Trails"



BCHC's 2015 Rendezvous was held at the Calaveras County Fairgrounds on March 13, 14 and 15, 2015. This year's theme was "Packing Our Youth into the Future", with lots of programs of kid's activities. There were leather classes, packing classes, horse painting and coloring contest. Everything was geared toward educating and entertaining the younger folks.

The older folks found a lot of traditional activities to be involved in; LNT Classes; a Trail Challenge; Wine, Beer and Cheese Tasting along with BLM Adoptions and Dutch Oven Cooking.

Educational trainings and seminars covered such topics as equine health care, nutrition, safety, saddle fitting, and pack demonstrations. The Western Art show featured hand-made leather and silver pieces which included a gun belt and holster, a knife sheath, and spurs. The Trail Challenge was an obstacle course competition that tested the skills of both the horse and the rider.

Both Jerry Tindell and JoDe Collins hosted clinics. We had a Large Animal Rescue Demonstration, a Pack Scramble, and much, much, more.

Following dinner on Friday night, there was a concert by Dave Stamey. Dave is a nationally acclaimed cowboy entertainer, whose music is described as "a celebration of shared heritage, an appreciation of the West as both a place and a state of mind".

We hope that you were able to attend this event and would love to see you again next year.

A Rendezvous Recap begins on page 14

The Backcountry News

An internal publication of the Backcountry Horsemen of California

Editor · TBA

We are looking for a new Editor

Backcountry Horsemen of California Official Website:

www.bchcalifornia.org

*Printed by The Manteca Bulletin and distributed by
The Oakdale Leader*

Publication Information: The Backcountry News is the official journal of the Backcountry Horsemen of California, Inc., published three times per year. All rights reserved. It is an independent publication with news and information of interest to Backcountry Horsemen members, with an average circulation of approximately 4,000 per issue. Annual subscriptions are \$15.00 for non-members. Nonprofit postage paid at Manteca, CA.

Who is BCHC? The Backcountry Horsemen of California, Inc. is a 501c4 nonprofit organization incorporated in the State of California, March 13, 1990, with a 501(c)4 education foundation established in 2007. The Backcountry Horsemen of California, Inc., reserves the right to refuse any advertisements and/or articles that are inconsistent with the Backcountry Horsemen of California's objectives and purpose statement. Other material will be printed at the Editor's discretion.

Disclaimer: Articles and advertisements that appear in The Backcountry News do not necessarily reflect the position or opinion of BCHC or its officers and members. Nor does publication of said articles and advertisements constitute an endorsement of the views or of the goods or services offered therein that they may express. Accuracy of all material is the sole responsibility of the authors. BCHC is not responsible for unsolicited material of any kind.

Reader Submission: The Backcountry News welcomes reader contributions, event and calendar dates, and Unit news. These will be printed on a space-available basis. Submissions may be sent on disk in a Microsoft Word format, emailed or sent by regular mail. Longer articles are subject to edit for space at the discretion of the Editor. Photos may not be returned.

Deadlines: Advertising, announcements, pictures and other copy must be received at The Backcountry News by the deadlines listed below.

<u>Deadline</u>	<u>Publication Date</u>
August 14, 2015	September 2015 - Fall
December 18, 2015	January 2016 – Winter
April 15, 2016	May 2016 - Spring/Summer

Advertising Rates per Issue: Rates effective January 2012. All ads must be paid in advance.

<u>Number of Issues:</u>	<u>1</u>	<u>2</u>	<u>3</u>	
Full Page	\$150.00	\$142.50	\$135.00	
Half Page (h/v)	\$100.00	\$95.00	\$90.00	Cost
Quarter Page (h/v)	\$80.00	\$76.00	\$72.00	per
Bus. Card (h/v)	\$25.00	\$23.75	\$22.50	Issue

Advertising: All ads must include all fonts and images used in artwork. Ads must be at a resolution of 300 pixels per inch at the actual size used in the artwork. Mail payment to the BCHC Treasurer. Checks returned from the bank will have a \$25.00 return check fee. No advertising will be accepted from advertisers with outstanding balances. Liability by The Backcountry News shall not exceed the space occupied by the error. Never shall The Backcountry News be liable for any general, special or consequential damages. All claims for adjustments must be made within 30 days of the first publication of said ad.

2015 Executive Committee

President

Richard Waller · (805) 489-8885 · homeranch@gmail.com

1st Vice President

Lloyd Erlandson · (209) 632-6470 · Lloyd.Erlandson0@gmail.com

2nd Vice President

Stacy Kuhns · (909) 633-1705 · stacykuhns@aol.com

Secretary

Kaye Bruns · (661) 803-5075 · kowgrl@charter.net

Treasurer

Lynn Joiner · (661) 747-6347 · lynnjoiner7@gmail.com

Co-Vice Presidents of Public Lands

Thor Bodtker · (415) 328-4545 · thunder.t@hotmail.com

Susan Patton · (760) 764-2850 · bludog60@hughes.net

Vice Presidents of Education

Dan Horn · (707) 544-4543 · bearstrap@msn.com

Denise Robinson · (559) 877-3532 · robnden@netptc.net

BCHA Executive Director/Chairman

Jim McGarvey · (706) 669-1015 · ExecDirector@backcountryhorse.com

BCHA National Directors

Ann Lange · (760) 378-2113 · kvvet@onemain.com

Pete Kriger · (909) 910-4619 · pkrigerjr@yahoo.com

BCHA Alternate Director

Dan Clifford · (619) 659-3038 · bigeasycowboy@mac.com

2015 State Coordinators

Accounting

Weir and Associates · (661) 323-1514

Annual Meeting

Kaye Bruns · (661) 803-5075 · kowgrl@charter.net

Newsletter Editor

TBA -

Insurance

Lloyd Erlandson · (209) 632-6470 · Lloyd.Erlandson0@gmail.com

Membership

Chip and Linda Herzig · (775) 436-3634 · membership@bchcalifornia.org

Rendezvous General Chairmen

Lloyd Erlandson · (209) 632-6470 · Lloyd.Erlandson0@gmail.com

Mike Kohlbaker · (916) 214-6505 · 4horsen@sbcglobal.net

BCHC Co-Youth Coordinators

Jacque Murphy · (707) 498-6648 · brennalu@hotmai.com

Mary Odell · (559) 658-7563 · modell@sti.net

Web Coordinator

Jacque Murphy · (707) 498-6648 · brennalu@hotmai.com

President's Page



What if, you drove up to your favorite trailhead, ready for a ride into your favorite wilderness, and found a locked gate with a sign that said, "NO TRESPASSING, Property of Méikuàng Shíyóu Corporation? This could happen. This is serious. Please pay attention to what I write here, we all need to get involved and stop what could happen. Today, 47% of California's land aside from the military reserves is available for our recreation, and may I say, available for the rejuvenation of our spirit. For many of us, our spirit, our souls are inextricably intertwined with blazing campfires, steep trails, pines, the smell of granite in the hot sun, the music of streams dashing down boulder filled stream beds, the creak of leather tack as our animals move down the trail, and yes, even the bray of a mule waking us up, far too early in the bright clear morning. I know mine are, and I would not want to live in a world where I cannot enter wild land, camp by a creek, greet my animals in the morning, watch them graze quietly in a mountain meadow. Yet, this is all under threat.

Let me say this here, there are few of us that feel the federal land agencies are doing a damned good job of taking care of our land, but, the land is there, it is largely protected, and we can saddle up and ride into most of the 640,000,000 acres (27%) of federal public land in our nation, or the 104,765,440 acres (46%) of federal public land in California. Compare that to Texas, our largest state outside of Alaska with 2,977,950 acres (1.8%) in Federal ownership over half of which is reserved military land. A common complaint I hear from horsemen and women in Texas is that there is very little public land in Texas to ride and camp on. We certainly do not want that here.

I quote here; "WASHINGTON, D.C.--This week, Congressman Ted Poe (R-TX) introduced H.R. 1931 the American Land Act. This bill would require the Bureau of Land Management and the National Forest System to open up about 1/3 of its land over five years for sale to the American people. The federal government currently owns 27% of the total land in the United States. This land is larger than the countries of France, Spain, Germany, Poland, Italy, United Kingdom, Austria, Switzerland, the Netherlands and Belgium put together. The proceeds from the sales--potentially billions--would be directly deposited into the Highway Trust Fund, making an investment in our transportation infrastructure."

And here; "Washington • Two Utah congressman are launching a "Federal Land Action Group" to identify ways Congress could push a transfer of federal lands to state and local governments. GOP Reps. Chris Stewart and Rob Bishop announced the new working group on Tuesday and said that it would hold a series of forums with experts on public lands policy

with the end goal of introducing legislation to move the federal lands into state and local control."

Make no mistake with this; it is a well-orchestrated effort to privatize our public lands, to sell off the National Treasure that is the primary legacy President Theodore Roosevelt and those who followed of every political persuasion. This is not a Conservative vs. Liberal issue; it is an issue of those who see our public lands as the jewel in the crown of America, and those who see only dollar signs. If you haven't yet, please read these two books;

[The Wilderness Warrior: Theodore Roosevelt and the Crusade for America](#) by Douglas Brinkley.

[The Big Burn: Teddy Roosevelt and the Fire that Saved America](#) by Timothy Egan

These two books will provide the excellent reasoning behind what Theodore Roosevelt put in motion. On my living room wall, above my very old framed topographic map of Yosemite is the iconic photo of Teddy Roosevelt and John Muir at Yosemite. Those two men look down on me as I write, their writings and actions have guided me since I was a child, they fought against the land rapers and pillagers, and their fight is not over.

At the recent Backcountry Horsemen of America National Board meeting in Sacramento this topic was one of the strongest topics under discussion. The Board passed a resolution unanimously opposing these Bills. I have inserted the resolution below.

Please research the issue, read the two books, please, please step up, there are 3,000 of us Backcountry Horsemen members in California, we need to, we must, line up and work to prevent the worst tragedy in America aside from the Civil War to occur.

Thank you,

Your President,
Richard Waller

**See page 5 for the resolution issued by BCHA



BCHC Membership
Mailing Address & Phone No.
1280 State Rt. 208, Yerington NV 89447
Email: membership@bchcalifornia.org
By phone: (775) 463-3634

BCHA



BCHA's NATIONAL BOARD OF DIRECTORS PASSED UNANIMOUSLY THE FOLLOWING RESOLUTION ON SATURDAY, APRIL 25, 2015, DURING BCHA'S NATIONAL BOARD MEETING IN SACRAMENTO, CALIFORNIA. THIS QUICKLY HAS BECOME A SIGNIFICANT ISSUE FOR ALL PUBLIC LAND USERS AND SUPPORTERS.

RESOLUTION TO OPPOSE THE TRANSFER OR SALE OF FEDERAL PUBLIC LANDS MANAGED BY THE UNITED STATES DEPARTMENTS OF INTERIOR AND AGRICULTURE

WHEREAS, the mission of the Back Country Horsemen of America is to work to ensure public lands remain open to recreational equestrian saddle and pack stock use, and

WHEREAS, the public lands of this nation managed by the United States Departments of Interior and Agriculture are a part of our national treasure and heritage, and

WHEREAS, these public lands are held in perpetuity to benefit future generations of Americans because of the renewable resources and recreational value, and

WHEREAS, we support the sustainable management of resources on federal lands in cooperation with other stakeholders, and

WHEREAS, the transfer or sale of these lands will remove large acreages from the nations federal public lands system, fragment existing land areas, compromise public access, and set a precedent for the privatization of all public land, and

WHEREAS, specifically the disposal of these federal public lands will decrease the opportunity for all recreational use of these lands,

WHEREAS, no federal lands should be removed or transferred except for lands considered under the Federal Land Transaction Reconciliation Act (FLTRA, PL 106-248),

THEREFORE, BE IT RESOLVED by the Back Country Horsemen of America to go on record in opposition of any plan, action or legislation for the disposal, sale, or transfer of public lands managed by the United States Departments of Interior and Agriculture (except under FLTRA), and

BE IT FURTHER RESOLVED that this resolution be made known to the President of the United States, congressional delegations and elected officials from each state, and agency officials of the Departments of the Interior and Agriculture.

Approved by the National Board of Directors of Back Country Horsemen of America on Saturday April 25, 2015.

BCHA

In Case You Missed It:

Grant Projects Funding—Funds Still Available

By Mylon Filkins DVM, BCHA Education Foundation

The BCHA Education Foundation directors are pleased to announce the funding of 20 grants ranging from \$120 to \$1000 to BCHA organizations in the states of Colorado, Oregon, Kentucky California, New Mexico, Kansas, Arkansas, Montana and Washington. A total of \$17,320 in grants were awarded. These grants were made available from the BCHA crowdfunding campaign and there are funds remaining. A total of \$8,000 remains for another round of grants up to \$1000 each.

The application can be made online through the link to the Education Foundation on the BCHA web site. Grants funded reflected the great diversity and volunteer efforts put forth by Back Country Horsemen. Grant projects included trail work, educational brochures, trail equipment, trail signage, youth activities such as FFA events, and training and support for a wilderness intern. The wide range of projects is a great tribute to the members of our BCHA organizations.

Taken from BHCA News Spring Issue

For more info & to download an application go to: <http://www.bcha.org/education/foundation/>

BCHA

This info is from Peg Grieve, Executive Secretary of BCHA.
"Thought you might like to see the Annual Summary of the BCHA Volunteer Hours for 2014. It's pretty impressive!
You do good work!"

"417,134 volunteer hours at a value of \$14,419,616"

"Oh my!! That is over 14 million dollars' worth of volunteer boots on the ground hard work keeping access to trails open for all... so proud to be a part of this amazing organization. "



SAVE YOUR HARD EARNED DOLLARS!

1 Year Individual Membership is \$50.00
2 Year Individual Membership is \$90.00

3 Year Individual Membership is \$125.00

1 Year Family Membership is \$60.00

2 Year Family Membership is \$110.00

3 Year Family Membership is \$150.00

Young Adult (18 to 25 years old) is \$15.00

BCHC

REPORTING FROM MARIPOSA COUNTY HOME OF YOSEMITE NATIONAL PARK

April 7, 2015

This will be the last summer for day horseback rides in Yosemite National Park!

Three years ago at the Yosemite Wrangler's Reunion it was reported that the Park Service was planning on discontinuing the day horseback rides in Yosemite Valley and Tuolumne Meadows. I was shocked and saddened as one of my fondest memories as a youngster was a horseback ride in Yosemite Valley. My husband and I are advocates for continued stock use on our public lands, and are actively involved in lobbying to keep our National Forests and Parks accessible to "we the people" and our livestock. When the, hard to acquire, Preliminary Workbook came out about a year later, I managed to get one and was surprised to see that many of the recreational activities and amenities that have been enjoyed in the Park for over 100 years were going to be eliminated or severely limited. Some of the things listed were the historic ice rink, bike stands, river rafting, the Tuolumne Meadows Service Station, Sport Shop and Mountaineering School, several gift shops, and the historic bridges. Interestingly the horseback rides were not mentioned in this document, and the Workbook said it was beyond the scope of the Plan.

My interest was piqued and I decided to attend every public meeting possible and let my voice be heard. I wrote articles for various newspapers and publications as I acquired information in an effort to inform our citizens of what the Park Service intended to do, and requested the Merced River Plan (MRP) as soon as it was available. It arrived as I was recovering from knee surgery, so I had some time to read the lengthy 2,500 page document. I found it extremely flawed, and discovered that the reason the Park Service was removing all of these things was to satisfy the Ninth Circuit Court in an effort to avoid future litigation. It arose from a settlement in a legal action brought against the Park Service by local preservationists who spoke for themselves only and not the general public. Instead of complying with a court order, the National Park Service (NPS) settled the case and agreed to undertake a whole new comprehensive master plan and bought off the plaintiffs' attorneys with \$1,000,000 of taxpayers' funds, when not required to do so. During this process of discovery we became acquainted with Peter T. Hoss, a retired attorney from Salinas. Peter is the author of "Born in Yosemite," and grew up in YNP. He also had many contacts with other concerned individuals who have an intimate connection with YNP, and we became founders of "Yosemite for Everyone."

Our research uncovered several false premises concerning the Merced River Plan. They are as follows:

- First of all we received documentation from Tony Coehlo, who drafted the legislation applying the Wild and Scenic Rivers Act WSRA to the Merced River. It stated that he never intended that the WSRA to apply to the Merced River within Yosemite National Park. The legislation was aimed at stopping dams west of Yosemite Valley outside the Park. The Park Service has refused to accept this statement.
- The WSRA applied to the Merced River within Yosemite Valley supersedes and pre-empts the 1864 grant of Yosemite Valley and the Mariposa Grove and the Organic Act of 1916 which set aside



these areas for public enjoyment.

- Yosemite Valley should be "restored" to a "wilderness" it never was. Yosemite Valley was inhabited by Native Americans for countless years and has been a recreational area for almost 150 years.
- Due only to their numbers, visitors have become the enemy rather than beneficiaries of a public trust.
- Services provided to visitors to make their visit more enjoyable are "commercial" and should be limited. Yosemite was saved for the visitor by its early champions from truly commercial activities, such as mining, logging and sheep and cattle grazing.

On May 7, 2013 five founding members from the Yosemite for Everyone group and Bob Magee our BCHC Public Lands Representative met in Fresno with representatives for Senators Dianne Feinstein, Barbara Boxer, and Congressman Jim Costa to discuss our concerns about the Merced Wild & Scenic River Draft Comprehensive Management Plan and Environmental Impact Statement. They listened to our input, but decided to wait until the Final Environmental Impact Statement (FEIS) came out to comment on the Plan.

Then on July 9, 2013, Peter T. Hoss and I along with Brian Ouzounian of the Yosemite Camper's Coalition were invited by Congressman Tom McClintock to testify in Washington DC before the Subcommittee on Public Lands and Environmental Regulation on the "Public Impacts of Closing Amenities at Yosemite National Park." It was an experience that I will never forget, and an honor to be invited to speak on behalf of people.

So where are we today?

On April 11, 2014 a letter was sent to Sally Jewell, the Secretary of the Dept. of the Interior from Senator Feinstein, and Representatives Costa McClintock, and Denham requesting more detailed information about how the management plans will be implemented in YNP. Director Jonathan Jarvis replied with a very vague letter on July 22, 2014. The

Prospectus was released on July 9, 2014. It did in fact eliminate the day horseback rides in Yosemite Valley and Tuolumne Meadows, and listed all of the activities that would be discontinued or relocated. So it appears that the Park Service is moving forward with their Plan in spite of strong opposition from a passionate concerned public. Here are the comments that I submitted to our representatives concerning the discontinuation of the day horseback rides.

HORSE & STOCK USE CONCERNS

I have already expressed my tremendous disappointment over the removal of the day horseback rides in Yosemite Valley and Tuolumne Meadows. I find Director Jarvis' reasoning flawed. Just because an activity such as horseback riding is



Me, my husband Kevin Barry, and Peter T. Hoss with our Congressman Tom McClintock in Washington DC.

BCHC

not as popular as viewing the scenery, I see no real justification for its removal. I am aware that there is a bias against horses by backpackers and hikers. However, there are no documented concerns in the Plan of significant conflicts between them. There are no threats to the Merced River from the rides, and no articulation of the enjoyment of the experience by visitors. Horse manure on the trail cannot be used as a justification, as 45% of stock use is administrative and will remain. The trend for many years in Yosemite and other parks has been to incrementally remove horses and stock use. The private horse camp in Tuolumne has shrunk dramatically over the years. There is no private horse camping in the Valley, and designated parking and trail heads for private horse users has not been identified. The Wawona horse camps will be relocated to the Maintenance Yard area, with no details as to where or how many they will accommodate. Once again the present horse camps near the South Fork in Wawona have not degraded the river in any way. Concerning the High Sierra Camps, it appears that the Park Service is working toward incrementally removing them as well, with slight reductions that perhaps no one will notice or miss once they are gone. Jarvis says that the 4-bed reduction at Glen Aulin is an insignificant change. However, when you add the 18 bed reduction at Merced Lake, this could add up to a substantial reduction of TOT taxes for the county. They will also be removing 11 of the 22 historic canvas tents at Merced Lake, but retaining the tent pads to "preserve these historic resources." I find this ridiculous. Are they going to be used for anything, except to look at without the canvas? How sad. They will still be making a footprint in the camp. Either remove the 11 tents completely or keep them as they have "historically" always been, with their canvas siding. The bed reduction in these two camps will also create an imbalance in the hut to hut experience. This is a popular loop trail system that groups of various sizes can enjoy together if the accommodations in the camps are consistent. Lastly, the High Sierra Camps are historical. They are enclaves, and are not part of the designated wilderness. Horse and stock use are allowed by law in the Wilderness Act. The High Sierra Camps (with no reductions in bed space) and stock use should be retained and embraced as part of our heritage, and are unrelated to river protection.

What I find interesting is that the day horseback rides were never listed for removal in the infamous Footnote 5, that the Park Service is using it for its justification for eliminating all of the activities mentioned. We were told by the Park Service that it was a law, when in fact Footnote 5 was merely a suggestion by the 9th Circuit Court. It was never mandated. The only thing I found in the MRP was a graph, showing low usage of the activity. So the general public was never fully informed about the removal of the day rides, and was mostly unaware that they were going away. The Park Service plans on relocating the day rides to Wawona, which is beautiful but it's not Yosemite Valley with Half Dome framed between two ears.

In conclusion, here is a cowboy poem that I wrote as a tribute to the past Yosemite Wranglers, and all of the present ones who will be loosing their jobs after this summer. Adios!

Respectfully Submitted: Wendy Brown-Barry-Cowboy Poet www.wendybrown-barry.com -

Member of the Sierra Freepackers and the Mid Valley Backcountry Horsemen - For more information on the Merced River Plan visit Yosemite for Everyone's Facebook page.

YOSEMITE WRANGLERS

By
Wendy Brown-Barry

Here's to the Yosemite Wranglers
They're the last of a dying breed
They can pack anything from woodstoves to privies
"Git 'er done," is the Wrangler's creed.

Their days in the Park may be numbered
Our history's slipping away
If it weren't for the wranglers, horses, and mules
The world'd be quite different today.

They helped build the trails, roads, and bridges
They're farriers, teamsters, and guides
Takin' youngsters and oldsters and handicapped folks
On perhaps, their very first ride.

These boys all came from hardy stock
And lived by a mountain "Code"
They were Yosemite's first stewards
And took care of the livestock they rode.

Like the time along Cathedral Lake
Bob Barrett was leadin' a string
When a mule kicked out or' the lead rope
A wreck was a comin' sure thing.

The mule behind flipped upside down
And landed in the lake
It took brains and brawn and courage
Cause there was some lives at stake.

Remembering McGregor's words
"If he goes, you go," he said.
Bob held that mule's head to keep him from drowning
If he hadn't that mule would be dead.

He got the rope cut and got him out
And really saved the day
If Bob hadn't jumped in to save him
There'd be some Hell to pay.

Or the time Eddie Mankins and George Meyer
Rode thirty miles in the snow
Bringin' stock down off a high meadow
To the Mt. Bullion pastures below.

Horses and mules made their livin'
They needed their stock to survive
They were ready to do whatever it took
To keep their livestock alive.

Some are still out there packin' them mules
And many have passed on
I wish I could mention them all right here
But, this poem would be way too long.

I'm sure grateful for the ones I've known
And wish I'd known the rest
They're a part of our living history
A legacy of the West!

The campfire's down to a flicker
Let's pray it never goes out
Let 'em still cargo that sawbuck and decker
'Cause that's just what packin's about.

BCHC

2014 Top Hands

Submitted by Lynn Joiner BCHC Treasurer

Antelope Valley Valerie Zera

Eastern Sierra Phil McDowell

High Country Ernie Coe

High Sierra Julie Beale

Kern River Valley Pam Kleidon

Kern Sierra Tammy Bozarth

Lake-Mendo Debbie Watson

Los Padres Patty Pembroke Bill Chaides

Mid Valley Kathy Dollarhide Doug Dollarhide

Mother Lode Jerry Heitzler

North Bay Cindy Rowe

Redshank Riders Gail McCreight

Redwood Cathy Mathena

San Diego Cheryl Wagner

San Gorgonio Pass Mandy Picozzi

San Joaquin Sierra Muriel Hollland

Santa Ana River Bill Moser

Sequoia Mike Deatherage

Shasta Trinity Kim Gardner

Sierra Freepackers Joyce Granger

Sutter Buttes Bill "Doc" Colvin

Top Of the State Penny Wells Thomas

OBJECTIVES AND PURPOSE of the BACKCOUNTRY HORSEMEN OF CALIFORNIA (from the BCHC Bylaws)

- To improve and promote the use, care and development of California backcountry trails, campsites, streams and meadows; to advocate good trail manners.
- To promote the conservation and utilization of our backcountry resources in concert with livestock transportation.
- To keep the backcountry trails and forage areas open to horsemen on all public lands.
- To keep current information before the Corporation membership and its local Units regarding new legislation or management plans related to government regulations of the backcountry.
- To support or oppose new proposals, plans and restrictions as related to the interest of horsemen and those persons interested in recreational stock use and enjoying the backcountry.
- To promote the interest of people who, due to health or physical factors, need transportation other than by foot on backcountry trails.
- To promote public awareness and interest in the historical aspect of horsemen and stock in the backcountry and to help educate backcountry users on ways to use the trail and forage in a manner that conserves the backcountry resources.
- To assist in keeping the public informed of the vital need for a clean backcountry.
- To promote a working relationship with and keep the work and interests of the Corporation before our local, state and federal officials.
- To assist in the formation and continuation of local Units to carry out these purposes

GET INVOLVED, DO YOUR PART

DON'T FORGET: The BCHC Executive Committee will no longer send out membership renewal verification "green slips" via regular mail. Instead, each unit president and membership chair will get a personal email from the BCHC Membership Chair (Chip Herzig) with each units' data AND it will be put on the web page in the password protected section.

BCHC

The BCHC Education Fund

Chip Herzig/Dan Horn

After the confusion at the last State Board of Directors (BOD) meeting concerning the Ed Fund it became apparent that we need to refresh our grey matter as to what it is and how to use it and where the money comes from to keep it alive.

So here goes.

Several years ago the BOD decided to pursue a charitable organization as part of BCHC to give our members and donors a method to donate to us and receive a tax break too. As we proceeded down this path we realized that we needed help and hired a company to make it happen. After jumping through all the State and Federal hoops we finally got our BCHC Education Fund Inc. completed. This California corporation is a non-member entity that is a charitable organization (IRS calls it a 501C3).

So now BCHC has a split personality with our BCHC side (501C4) and our Ed Fund side (501C3). The BCHC side is funded from your membership dues while the Ed Fund side receives the bulk of its money from the profits of our Rendezvous. In addition any member or sponsor can donate to the Ed Fund and receive a tax break from this donation. Sometime ago the BOD also voted to include a portion of your membership dues to be a donation into the Ed Fund, thus for every renewal or newbie member \$2.00 goes into the Ed Fund for a specific unit.

Within the Ed Fund are two distinct buckets of money

1. Unit specific Moneys

Unit specific funds come from members who go out and solicit donations or the unit kicks in the money or the membership dues donation fills this bucket.

Example:

Someone wants to donate \$5000.00 to your unit and wants to use it as a write off to a charitable organization or wants a tax receipt; you must have them make the check out to BCHC Ed Fund ear marked for your unit. Mail check to the State Treasurer.

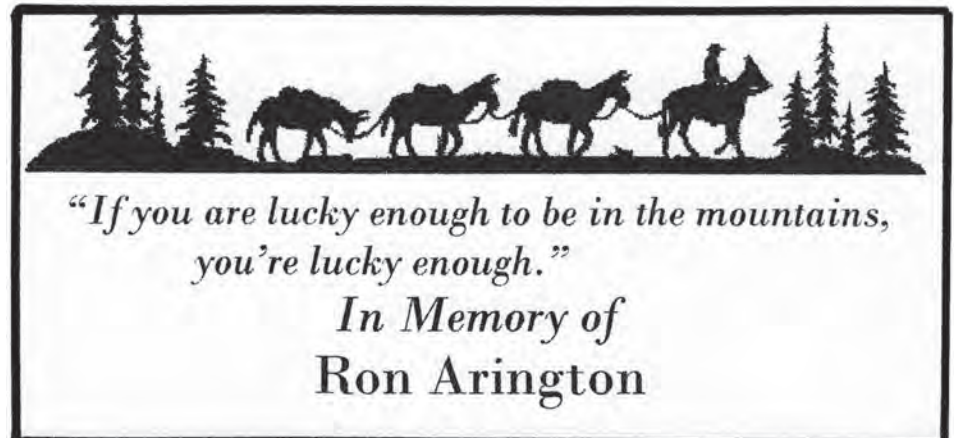
To use this money is as simple as come up with an education or trail work project in accordance with the Ed Fund Bylaws then call the State Treasurer and State President and if the project meets the intent of the Ed Fund Bylaws a check will be on its way to your unit.

2. General fund

To use the ED Fund general fund money is a little more complicated. You propose your project as a grant application filling out the forms within the Ed Fund Bylaws and submit these documents to the State Treasurer. The Treasurer will strip off all units' identifying information and disburse the grant request to the Evaluation Committee. They will assess the goodness of the grant request and get back to the Treasurer with their recommendation. The Treasurer will then assemble the governing board of the Ed Fund which is the BCHC President, the BCHC treasurer and the two BCHC VPs of Education and Public Lands. This group will take the Evaluation committee's recommendation and determine the funding level for the project. This process takes some time and all grants are kept in strict confidence until the process is fully completed.

The general fund process was developed after our CPA told us we needed to make sure our process of awarding tax free dollars was above board and auditable. We developed this process mirroring other 501C3 entities that the CPA showed us. To become more familiar with our Education Fund a copy of the Ed Fund Bylaws is available from our State Treasurer or State Secretary.

Grant Forms are available on the state web site under forms at www.bchcalifornia.org/docs/501c3Application.doc



BCH Education

SOME EDUCATIONAL INFO FROM DAN HORN

The 2014 Individual BCHC EDUCATION AWARD Goes to Richard Waller

Richard has been the perfect example of what you would see for Education of our fellow members. He, alone, has acquired several grants in order to do trail work in our local Los Padres area. He was contacted by Warren Alford of The Wilderness Society. The Wilderness Society adopted Stony Creek Bypass Trail as one of their 50 trails for the 50th anniversary of The Wilderness Act. Because of this contact, Richard is preparing a trail celebration to be held May 2, at Biddle Park in Arroyo Grande. He will promote the Objectives and Purpose of BCHC at this event.

He and others accomplished extensive trail clearing on the Caldwell Mesa Trail and Stony Creek Trail in the Garcia Wilderness of the Los Padres National Forest.

Through Richard's direction and encouragement, the Los Padres unit purchased a Stihl Brush Cutter for our work parties to use in clearing trail, as well as an efficient battery powered chain saw. He managed to get our unit work trailer in order and was instrumental in the unit's purchasing additional hand tools that were needed.

Richard has been our unit's Work Detail chair for the last four years and has been a great asset to our unit. He took over our Trail Rides position and planned rides once monthly. Before the rides, he provides a brief education program to bring awareness to hazards and/or medical issues that riders might encounter on the trail. He, along with others in our unit, has been certified in Cross Cut, Chainsaw, First Aid and CPR. He attended a R5 Wilderness Ranger Academy and is a Volunteer Wilderness Ranger for the USFS, as well as previously attending a 2-day USFS Packing Training School at Mammoth Lake.

Richard and other members of the Los Padres unit completed the first half of the Backcountry Horsemen Old Spanish Trail Ride which left from Cajon Pass on October 11th and ended on November 7th at Parowan Utah. He had assistance from other Backcountry Horsemen in the state of Utah. They traveled through California, Nevada and finally Utah. The second leg of the trip will begin August 16, 2015 and travel through Utah, Colorado and finally ending at Santa Fe, New Mexico on September 16th. The ride has promoted education concerning the BCHC.

He will be using a Cal Fire inmate crew to work on one of our local trails in the Los Padres Forest, educating them on the objective and purpose of BCHC. Throughout the year, during our general meetings, Richard provided updated information and concerns on Public Land use in our local, statewide, and national areas. He presently is on the board of the Non-Motorized Trails Committee. This organization has created a Partnership with the Los Padres National Forest and consists of Forest Service personnel, Los Padres Forest Association, Mountain Bikers, Hikers, and Santa Barbara County Trail Council. Their purpose is to ensure good communication and maintaining non-motorized recreational trail use by continuing to provide outstanding recreation opportunities for hikers, bicyclists, and equestrians.

He developed a unit packing class which consists of two weekends with education, instruction and hands-on packing techniques. The last weekend of the class, the member students rode into a camp area with only their pack stock and equipment for further instruction in trail camping. Richard assisted in demonstrating packing skills on gentle use practices to our youth attendees at our Summer Youth camp.

He also assisted at the Backcountry Horsemen of California booth at the California Trails and Greenways Conference this past year.

Richard was nominated as our State First Vice President for both years 2012 and 2013. He now is our State's President and also stepped up to the plate for our local Los Padres Unit.

"First" Leave No Trace Master Educator Course

Our first LNT Masters Course is full and scheduled to take place this coming June in Weaverville, California. We have a class of nine, all from outside agencies.

This five-day Leave No Trace Master Educator Course is designed for individuals who will be teaching Leave No Trace Trainer Courses and Leave No Trace Awareness Workshops. This Course is the foundation of the national Leave No Trace education model. During this course, time is spent covering how to facilitate a Trainer Course – planning, logistics, equipment, running groups in the field, meals, risk management, how to teach, and more. No personal stock will be involved for this course. Only BCHC stock will present for demo purposes only.

This is an exciting time for our State Education Committee, it has been a long process to get our first class set up. Lots of "Planning Ahead and Preparing". Thanks to all involved for your hard work.

Wilderness Rider Class of 2015

By now the applicants will have been selected and notified. The WR course will again be held at Granite Creek Campground, Eastern Madera County in September.

The committee was excited to have so much interest in this program and how our current Wilderness Riders are making a positive impression. The State Education Committee looks forward to each year a new class is offered, and the commitment they contribute.

The Wilderness Rider program is similar to the LNT Master Course but focuses more on teaching the LNT principles.

HAVE A SAFE AND FUN SUMMER, PLEASE BE SAFE WITH CAMPFIRE!
REMEMBER THE SEVEN LEAVE NO TRACE PRINCIPLES;

1. PLAN AHEAD AND PREPARE
2. TRAVEL & CAMP ON DURABLE SURFACES
3. DISPOSE OF WASTE PROPERLY
4. LEAVE WHAT YOU FIND
5. MINIMIZE CAMPFIRE IMPACTS
6. RESPECT WILDLIFE
7. BE CONSIDERATE OF OTHER VISITORS (I LIKE TO ADD "AND BE HELPFUL")

PRACTICE THESE AND IT WILL LEAVE A GOOD IMPRESSION OF "BACKCOUNTRY HORSEMEN OF CALIFORNIA".

Thanks, Dan Horn, Education Co-Chair

BCHC

BCHC 2014 Volunteer Report

Submitted by Stacy Kuhns - 2nd VP

Southern Units Represent Backcountry Horsemen of California at 2015 Horse Expo

Submitted by Allison Renck - Redshank Riders Unit

Unit	Members	Total dollars	Per Capita
Redwood	119	\$2,133,242.24	17926.00
Los Padres	348	\$1,315,144.75	3779.15
Shasta-Trinity	155	\$410,497.66	2648.37
Mid Valley	383	\$339,353.63	886.04
Eastern Sierra	55	\$186,116.26	3383.93
San Joaquin	129	\$175,556.74	1360.90
Sierra Freepackers	54	\$156,066.86	2890.12
Top of the state	157	\$136,996.20	872.58
Mother Lode	135	\$134,734.42	998.03
North bay	77	\$114,249.86	1483.76
Redshank	95	\$102,069.93	1074.42
Sequoia	103	\$92,288.09	896.00
San Diego	92	\$89,085.87	968.32
High Country	39	\$75,610.01	1938.71
Lake-Mendo	51	\$69,759.20	1367.82
Antelope Valley	68	\$53,646.86	788.92
Santa Ana River	58	\$29,298.06	505.13
Kern Sierra	98	\$24,058.98	245.49
High Sierra	91	\$20,795.42	228.52
San Gorgonio	44	\$14,195.35	322.62
Kern River Valley	34	\$6,642.00	195.35
Sutter Buttes	57	\$16,584.49	291.00
TOTALS	2442	\$ 5,695,992.88	

5.695 million

Packing demonstrations, Dutch Oven Cooking and Education were the highlights of the Backcountry Horsemen of California (BCHC) Southern Units Trail Symposium Area at the 2015 Horse Expo held at the Fairplex in Pomona California. The San Diego, Santa Ana River, San Gorgonio and Redshank Riders Units combined their efforts on January 30, 31 and February 1 to educate local southern California Equine owners about BCHC.

The symposium area included; a "Gentle Use" camp display, Dutch oven cooking demonstrations, "hands-on" packing demonstrations, a member recruitment area and a presenter area. Sue Watkins of the San Gorgonio Unit was the chairperson for the event. With her organizational skills, she was able to pull together approximately twenty volunteers from the various units. These volunteers used their skills in a variety of ways, from teaching packing skills to recruiting new members for BCHC. Bill Moser president of the Santa



Volunteers working the BCHC booth

Ana River Unit and his wife Marcia Moser worked all three days educating the public about Dutch oven cooking and providing "mouth-watering" samples of these delicious dishes. Bill said "he likes seeing the people enjoying the food prepared in a Dutch oven, which often generates a desire to learn the art of Dutch oven cooking".

Pete Kriger, Tom Firth, Mike Lewis and Marty Jorgenson used the event to teach packing skills, from load positioning to load tying. A highline was set up to present to the public the proper way to highline your stock when camping in the back or front country.

June Scales, the lead in the "Gentle Use" camp display, created an educational display that was informative and fun to tour. Many of the visitors commented on the information provided and reported that it had increased their awareness of ways to be a better steward when camping with their horses.

BCHC



Pete-Kruger-educating about highlining

The trail symposium featured a variety of presenters speaking on subjects from Lightweight Horse Camping by Robert Eversole from TrailMeister to Expanding your Trail Ride Adventures by Bonnie Davis. One informative presentation discussed ways to get different trail users involved in Trail Work, this topic was presented by Jim Meyer from Trails4all. Robert Eversole from TrailMeister said “he really enjoyed speaking at the Horse Expo, it was great to share experiences with all the people involved in the horse industry.”



Packing Demonstrations

On the last day of the event one volunteer shared her experience of helping promote BCHC, “it’s great to get out the word about what a great organization we belong to, and it’s even more fun to hang out and get to know BCHC members from other units.” “Not a bad way to spend a day”

Owning land will forever change you.



Every acre becomes your own piece of heaven. An escape from the outside world. A front row seat to watch God paint the sky with sunsets.

Caring for your land becomes your refuge.

Once you climb into the seat of a Mahindra tractor, stress flutters away with every rumble of the engine and every blade of grass you cut.

Mahindra is honored to help hardworking folks in communities across America rise to meet every challenge from Mother Nature and beyond.

Discover why we're the world's #1 selling tractor at MahindraUSA.com.

Mahindra Rise.

JOE'S SERVICES
P.O. Box 99, Mountain Ranch, CA 95246
209-754-5693 <http://www.joesservices.com>

BCHC



Region 5

Pack Stock Center of Excellence

ANNUAL ACCOMPLISHMENT REPORT

Education and Training

FY2014 saw COE representatives participate in 10 separate training events. Clinic and presentation topics given by COE instructors included crosscut saw training, Leave No Trace, stock safety and use for Type I and Type II Fire Teams, stock handling, and hands-on packing demonstrations. Educational events and formal trainings the COE participated in or sponsored included:

- * Annual Fire Refresher Training, Sequoia National Forest
- * Back Country Horsemen of California (BCHC) Annual Rendezvous, Norco, CA
- * BCHC Northern Units' Equine and Trails Celebration, Red Bluff, CA
- * Type I and II Fire Team Refresher, McClellan Fire Training Center, CA
- * California Conservation Corps (CCC) Placer Training Center, Auburn, CA
- * BCH of Oregon Packing and Wilderness Skills Clinic, Klamath Falls, OR
- * Packing clinic and crosscut saw demonstrations in partnership with BCHC, Mule Days, Bishop, CA

Future Opportunities

In 2014, a representative from each of the participating forests was nominated to serve on a steering committee that will provide guidance and set annual priorities for the Center's program of work in 2015 and beyond. One of the goals for the committee is to help to ensure the long-term success of the COE by developing a marketing strategy, helping to secure supplemental funding, pursuing new partnerships and building on existing relationships with supporting partners such as the Back Country Horsemen of California, American Conservation Experience, Student Conservation Association, California Conservation Corps, and Pacific Crest Trail Association.

To read the full article go to:
www.RedshankRiders.com/rsrimages/2014_USFSPackStockCOE_web.pdf

SUPPORT OUR RENDEZVOUS SPONSORS

**HORSE/MULE
TRAINER**

JERRY TINDELL

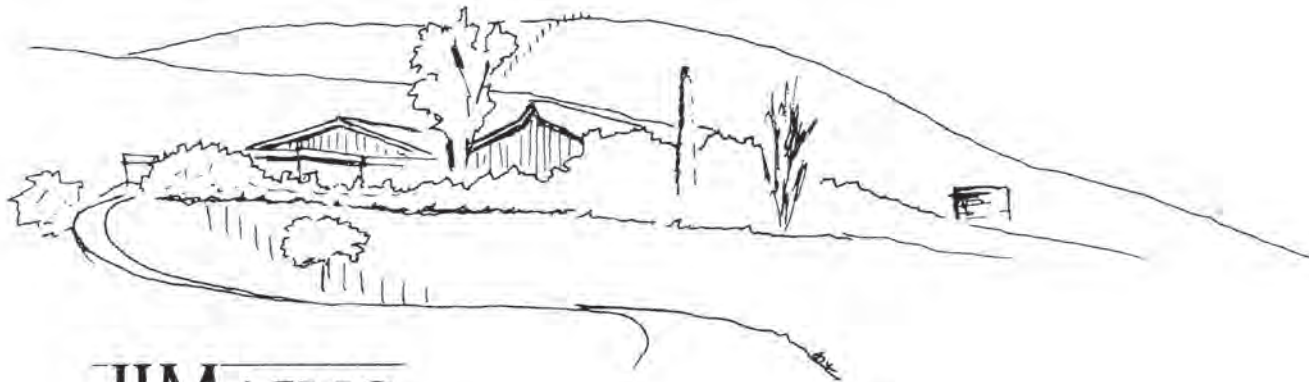
**TINDELL'S
HORSE & MULE
SCHOOL**

Acquire the skills to
build a safe and
effective ride.

- Horsemanship Clinics
Beginner/Intermediate/Advanced
- One on One Training
- Specialty Training
- Back Country Skills Clinics
- Stock Training



(877) 820-2033
JerryTindell.com



**JIMAINO
RANCHES**

Please accept this charitable contribution to BCHC. It is made "In celebration of the birthday of Darrel Polasek"

Jim Maino

5201 CloverRidge Lane San Luis Obispo, California 93401 (805) 543-3592

2015 Rendezvous ReCap

2015 Rendezvous: Through the Lens of My Camera

Photos and article by Kathy Zumbrunn, Mid Valley Unit

The rains came three days ahead, freshened the air and perked up the greenery for the 28th BCHC Rendezvous. By the time attendees started arriving Thursday, the sun was shining and the temperature rose to the 80s through the weekend!

This year Rendezvous was held at the Calaveras County Fairgrounds in the beautiful Gold Rush town of Angels Camp. The event was hosted by Mother Lode and Mid Valley Units of Backcountry Horsemen of California with Mike Kohlbaker and Lloyd Erlandson as chairmen. With the help of many BCHC members, the Rendezvous was off and running.

Seven barns were loaded with vendors selling everything from Essential Oils for Wellness and unique handmade jewelry to livestock supplies and tack. There were useful western household items, wind chimes, decorated bags and amazing things made from recycled materials.

Education Classes were conducted throughout the barns and included Packing 101, Odd Load Packing, various Gentle Use programs, CHP: Licensing & Horse Trailer Safety, Saddle Fitting, and fun things for "little packers" to do.

For those looking for tips on training their horses, Jerry Tindell, Steve Bauhr and JoDe Collins held several classes to help with the schooling of a special horse or mule.

The arena was divided into north and south halves and was filled with activity the entire weekend. Carlena Kellogg, BCHC Mid Valley Unit, held the Trail Challenge and Packer Trail Challenge competitions in the north arena Saturday

and Sunday. These seemed to be very popular events as there were riders lined up both days waiting their turns to do such things as scoop rubber frogs from a pond and dump them into a bucket; fill a pail of water, haul it around a barrel and dump it back into the tub, and even drape a "body" over the saddle and walk your horse around. Carlena had many fun and challenging obstacles for all the contestants and it took a calm and experienced horse/mule and rider team to complete the whole course with a good score!

The south arena was the scene of a multitude of competitions Saturday, with Odd Load Packing and Box Hitch and Diamond Hitch competitions for both adults and youth. This year three teens competed. This is what it is all about, isn't it? Getting youth interested in and trained to pack. All three of the young men demonstrated well-practiced skills.

Then the most chaotic and fun competition of all - the pack scramble! This is the most popular of all the events and the contestants did not fail to entertain the crowd again this year!

The horses were unpacked and turned loose. The crack of Jerry Tindell's bull whip had them kicking, bucking and stampeding around the arena, and the race was on! Packers ran to catch their frantic steeds. Carl Perry, BCHC Mid Valley Unit, was the first to catch his horse and calmly returned to his station and started to saddle his horse. By the time he had finished, his mule had returned, so Carl calmly and methodically packed his mule, mounted his horse and took a stroll to the end of the arena and back...with a perfect load.

It's great to
have our youth
participate in the
Rendezvous events.
They're important...
they are
the future of BCHC!

The action began when next out, Mid Valley Unit's 15-year-old Garrett Dollarhide's load shifted shortly after taking off and spooked his pack horse. Garrett dismounted and tried to fix the problem, but things went from bad to worse as the pack horse became entangled in the manly and bolted toward the other packers. There were horses, mules and people scattering, but in the end, the horse was caught, repacked and Garrett still made his ride with an intact load. There were several other "incidents" but, fortunately, no one was injured and the crowd got their thrills once again! Garrett was not only successful in re-packing his horse but he also came in second in the competition! Congratulations, Garrett!

Rendezvous evenings were filled with fun and good food. Friday night an excellent dinner was prepared by Up Country Catering, followed by BCHC's annual awards. To top off the evening we enjoyed a concert by Dave Stamey, nationally acclaimed cowboy entertainer, who never fails to delight audiences with his comedic wit and great music.



Garrett Dollarhide trying to get control of his pack horse.



Our winning youth: (L-R) Thies Thoming, Garrett Dollarhide and Dakota Massey



Dutch Oven Cook-Off: (L-R) Debra Mason (Chairperson), Carl and Julie Perry, Tom Donovan and David Rumsey. Front row: Judges Darla Coelho, Michael King and Vicki Whisler



Karen Lopes and Victor Pedroza in Odd Load Packing Contest

2015 Rendezvous ReCap

Saturday's evening meal was again prepared by Anne Jasper's Up Country Catering (from Mokelumne Hill) and followed by silent and live auctions and the raffle. There were many great items auctioned off, igniting several lively bidding wars over some of them! All in all everyone had a good time and went home with some wonderful treasures! To top off the evening, entertainment was provided by six talented cowboy poets.

In addition to classes and competitions, there were plenty of things to keep everyone busy; from the Wine, Beer and Cheese tasting, Western Art Show and Dutch Oven Cook-Off to shopping for something special at one of the many vendor booths. If you didn't have a great time, I don't know why!

From everything I have heard so far, the Angels Camp area seems to be a great venue for the BCHC Rendezvous. The Calaveras County Fairgrounds meet our organization's needs and the surrounding area is gorgeous. Backcountry Horsemen of California will be holding next year's Rendezvous there once again, so put March 18, 19 and 20 on your 2016 BCHC Lucky Calendar and be sure to come on down and have some fun!

See you in 2016!



RENDEZVOUS 2015

By Ted Fischer, SJSU

Hello there from Frog Town USA. Yes, that is correct Rendezvous 2015 was held at the Calaveras County Fairgrounds, Angels Camp California....Frog Town USA March 13th - 15th. The Fairgrounds was a great location for our gathering. The weather was wonderful and the surrounding foothills were green and gorgeous with many wildflowers in bloom. Clinics and classes started at 9 am Friday morning and ran all day. Some classes were: Packing 101, Odd load packing, packing with a decker saddle, Tandy leather make and take, Cross cut saw, High line Demo, essential oils for wellness, Dutch oven cooking, arts and crafts for kids, and many, many more.



Clinics were given by Jerry Tindell on "Using the Past to Build the Future", and JoDe Collins on "Training for a Better Rein". Friday night dinner was held in the Mark Twain Hall followed by a great concert by Dave Stamey concert

Saturday events started at 9 am with more training clinics, classes, and activities. For many BCHC members the highlight Saturday was the Trail Trial. SJSU had two members entered in the Novice competition: Pat Peverill who took 2nd place in Amateur and Dorraine

Smith taking 3rd in open division. Duane Peverill took 8th place in Amateur, WAY TO GO!

Saturday had Randy Witt and Ted Fischer teaching LNT classes. Randy taught "Leave What You Find", and Ted taught "Gentle Use with Waste".



Saturday evening was another great dinner, and then the silent and live auctions. Everyone had a great time and for the first time in a couple of years SJSU had a table decoration. Well done JC Parkin and Pat Peverill.

There was a big group of members for dinner Saturday. They were Joe and Carol Kaminski and their granddaughter, Duane and Pat Peverill, John and Jan Mikkelson, Randy Witt, Ted Fischer, Katie Horst, Dee Douglas a friend of Katie's, Peter and JC Parkin, Debbie McDougald, Bob Skinner, and Ron and Peggy Jefferson. If I missed anyone I apologize.

Sunday started off with Cowboy Church at 8 am and continued with classes and clinics. Classes included Equine Management and Nutrition, Pain Relief and Motion Restoration, and a Kids Corral. There was even a class on packing a riding saddle. I am happy that I attended Rendezvous this year and plan on going to FROG TOWN again in 2016. My favorite parts of Rendezvous were:

1. Seeing and spending time with friends
2. Dave Stamey concert
3. Jerry Tindell clinic on controlling your horse on the ground and while in the saddle.

Hope to see YOU'ALL at next year's Rendezvous.



2015 Rendezvous ReCap (cont'd)

MANY THANKS TO THIS YEAR'S RENDEZVOUS SPONSORS:

Animal Health Solutions
Black Oak Casino
Calaveras & Sonora Lumber
Cipponeri Golf Carts
Conlin Supply Inc.
D2 Trailers
Doug Perry Excavating
Elk Grove Milling
Hoof & Boots Saddlery
Hunter Dodge
Jode Collins
Joe's Service - Mahindra Tractors
Mackerrancher Auctions
Mark Twain Medfical Center
PriceCo Foods
Shingle Springs Band of the Miwok Indians
Sonora Ford
Spence Ranch Feed & Supply
Star Milling Company
Tandy Leather Factory
Terri Arington
Tindell's Horse & Mule
Triple M Ranch
Up Country Catering
Winton-Ireland Ins Agency
Yosemite Farm Credit



RAFFLE WINNERS

Gun from Fred's Firearms: Tom Firth (Redshank Riders Unit)
Stay at the Pt. Reyes Country Inn: Jan Mikkelson (San Joaquin Sierra Unit)
Early bird drawing for the 2016 calendar: Brad Lawatch (nephew of Vicki Morales, Treasurer of the Mid Valley Unit)

RENDEZVOUS AWARD WINNERS

PACKING EVENTS

Adult Box Hitch - Karen Lopes (Mid Valley)
Adult Diamond Hitch - Bob Herrick (High Sierra)
Odd Load Packing - Dennis Serpa and Dan Prine (Mid Valley)
Youth Box Hitch - Dakota Massey of Madera (non-member)
Youth Diamond Hitch - Garrett Dollarhide (Mid Valley)
Pack Scramble - Carl Perry (Mid Valley)

TRAIL AND PACK CHALLENGES

Open Trail - Jody Rumsey (Mid Valley)
Amateur Trail - Audrey Turpin (Redshank Riders)
Novice Trail - Michelle Edwards (non-member?)
Youth Wrangler - Kaitlyn Rumsey (Mid Valley)
Packer Trail Challenge - Jody Rumsey (Mid Valley)

DUTCH OVEN COMPETITION

Amateur - 1st Place - Carl and Julie Perry (Mid Valley)
Amateur - 2nd Place - David Rumsey (Mid Valley)
Professional - 1st Place Tom Donovan from Petaluma (non-member)

WESTERN ART SHOW

Photography - 1st Place - Chartier (Packer High Country)
Photography - 2nd Place - Mrs. Heitzler (Rider in Snowstorm)
Photography - 3rd Place - Cathy Dunckel (Horsing Around) (Mid Valley)
Photography - 4th Place - Kathy Zumbrunn (The Story of the Spooked Mules) (M.V.)
Metal Work - 2nd Place - Dan Dunckel (Wild Roses) (Mid Valley)
Metal Work - 3rd Place - Dan Dunckel (Copper Pot) (Mid Valley)

DO COSTUME

1st Place - David Rumsey from Sonora (Mid-Valley Unit)
2nd Place - Carl & Julie Perry from Hilmar (Mid-Valley Unit)
3rd Place - Tom Donovan & Family from Petaluma


NEWSLETTER

Los Padres Unit

TABLE DECORATIONS

Humorous : San Joaquin Sierra
Most Original: Shasta Trinity
Best Over All: Shasta Trinity

BCHC Membership Application

- NEW MEMBERSHIP APPLICATION Backcountry Horsemen of California
- RENEWAL APPLICATION 
- CHANGE - () PARENT UNIT () ADDRESS/PHONE/EMAIL () MEMBERSHIP TYPE

DCTR (YOUR MEMBERSHIP NUMBER) _____

**NEW MEMBERS WILL BE ASSIGNED NUMBER BY MEMBERSHIP COORDINATOR

PARENT Unit Affiliation): (Select and **CIRCLE ONE** Unit as your Primary Unit Affiliation)

- | | | |
|-------------------|-----------------|--------------------|
| Antelope Valley | Los Padres | San Geronio Pass |
| Eastern Sierra | Mid Valley | San Joaquin Sierra |
| High Country | Mother Lode | Santa Ana River |
| High Sierra | North Bay | Sequoia |
| Kern River Valley | Redshank Riders | Shasta Trinity |
| Kern Sierra | Redwood | Sierra Freepackers |
| Lake-Mendo | San Diego | Sutter Buttes |
| | | Top of the State |

MAIL TO:
BACKCOUNTRY HORSEMEN
OF CALIFORNIA
 1280 State Route 208
 Yerington NV 89447
<http://www.bchcalifornia.org>

Donate to BCHC
Education Fund
Tax Deductible

Packer	\$10.00
Mule Skinner	\$25.00
Other (Write in)	\$ _____

MEMBER'S NAME -No Business Names; Please Print Clearly		SPOUSE/MEMBER'S NAME -MUST SHARE SAME ADDRESS	
ADDRESS			
CITY	STATE	ZIP	PHONE
EMAIL ADDRESS			
Make Checks Payable to: BCHC	CHECK # _____	DATE SUBMITTED: _____	
TOTAL ENCLOSED: \$ _____			

PARENT UNIT MEMBERSHIP TYPES: (CIRCLE ONE)

Individual \$50.00 Family \$60.00 Young Adult (18-25 years old) \$15, 2 year Individual \$90, 2 Year Family \$110
 3 Year Individual \$125, 3 year Family \$150, Benefactor \$100.00 Patron \$250.00 Mt Whitney \$500.00

ASSOCIATE MEMBERSHIPS: AN ADDITIONAL \$15.00 PER UNIT IS ADDED TO YOUR PARENT UNIT DUES.
 ASSOCIATE MEMBERSHIP UNIT AFFILIATIONS **MAY NOT** BE FOR THE SAME UNIT AS YOUR PARENT UNIT.

Associate Membership for: _____	\$15.00/unit (Unit Name (from above list))
Associate Membership for: _____	\$15.00/unit (Unit Name (from above list))

Please write additional choices on back

Please clip form along dashed line - KEEP BELOW INFORMATION FOR YOUR RECORDS

PARENT BCHC MEMBERSHIP TYPES
 Individual, Family (Shared*), Benefactor, Patron, and Mt Whitney. A Parent Membership is affiliated with a single Local Unit. BCHC members may NOT hold more than one active Parent Membership.

A SHARED Membership is for two adults with differing last names, each sharing a common address.

ASSOCIATE MEMBERSHIPS
 These special Memberships are only available to persons already holding Parent BCHC Membership. No one may sign up for an Associate Membership without 1) having registered one of the Parent Membership types, and 2) having selected Parent Unit affiliation.

- You may sign-up for as many Associate Memberships as you like.
- Associate Memberships may also be initiated at any time during the term of your Parent Membership.
- Associate Memberships must expire concurrently with the Parent Membership, and are renewable only at the time of renewal of the Parent Membership.

Complete information regarding BCHC Membership is available on the MEMBERSHIP page at: <http://www.bchcalifornia.org>

Revised 10/2014

KEEP FOR YOUR RECORDS
 I SUBMITTED AN Application Form for:

<input type="checkbox"/> Individual Membership	\$ 50.00
<input type="checkbox"/> Family (Shared) Membership	\$ 60.00
<input type="checkbox"/> Benefactor Membership	\$100.00
<input type="checkbox"/> Patron Membership	\$250.00
<input type="checkbox"/> Mt Whitney Membership	\$500.00
<input type="checkbox"/> Donation - Packer	\$10.00
<input type="checkbox"/> Mule Skinner	\$25.00
<input type="checkbox"/> Other (Write in)	\$ _____
<input type="checkbox"/> Associate Membership	\$ _____
Total Remittance	\$ _____
Check Number _____	
Date Mailed _____	

Questions: Contact membership@bchcalifornia.org

Unit News

Trip to Lion Peak

Story & Photos by Michael Lewis – Redshank Riders Unit President – Submitted by Rhonda Strickland RSR Unit Newsletter Editor

It started out as an ordinary day. It was a bit chilly but good riding weather. The report came in that there were a number of trees blocking the PCT in the Lion Peak area; a few small trees south and a large one right on the face. The decision was made that we would take the Cedar Spring Trail from the north and a small crew would come in from Penrod Canyon from the south and meet somewhere in the middle.

We arrived at trail head, loaded up and started up the trail. As we ascended it appeared we were riding into a fog blowing in from the north. Danny's words to me were, "It'll burn off when the sun gets higher". The further we rode the more I realized this would not be the case. We hit the PCT and headed south, pushing through wet brush

and picking our way down the trail through the fog.

Then it appeared out of nowhere, our hazard tree, passable by hikers but not riders. Already soaking wet, we dismounted, pulled off our gear, and kicked the mules out into a small meadow just off the trail. After sizing it up, we went to work clearing the debris from around the tree, sawing off the branches, and then finally removing the tree itself. Cutting it into manageable pieces, the trail was cleared in no time.

About then some of the crew coming from south showed up. They had cleared the other trees. Then, out of the fog, three hikers came down the trail. They had come in Cedar Spring Trail and were headed to Hwy 74.

Not the best day for a hike but they were dressed for it. Here is where it gets interesting. As we were finishing up loading the gear a couple of gals, dressed in shorts and light tops, come out of the fog hiking south. Both Danny and I just looked at each other and starred. Here we are, dressed in winter coats, long handles, gloves, scarves, with our hats pulled down to our ears and they are dressed for a sunny hike in the hills. Come to find out, they were down from Canada to do some winter hiking where the weather was warm. Go figure.

Finally they headed south and we got ready to go north. That's when I realized my riding mule had disappeared. Knowing she did not go back the way we came, I started to take the trail South. Walking at first I didn't see or hear her, I sped up to a trot and finally caught a glimpse through the trees. Then it was an all-out run to catch her. Thankful for a long lead rope, I caught her and headed back. I guess she wanted off that ridge more than we did and was following whoever was moving. The trip down was cold, wet and windy with some snow flurries thrown in, but uneventful. Hats pulled down and tipped towards the wind we finally got off the ridge, down Cedar Spring Trail, and back to the trailers.

All and all I would call this a good trip. We accomplished what we started out to do and came back with a story to tell. Remember, "The worst day riding is better than the best day working".



Story

&

Photos

by

Michael Lewis

Unit News

MLU Riders Spy Bald Eagle

Submitted by Lucy Badenhoop

The Mother Lode Unit's first campout of 2015 was chilly in the evenings, foggy in the mornings, but gorgeous during the midday rides. At Camp Far West near Wheatland CA, the riders were joined by some fishermen in boats on the lake, but didn't meet anyone on the trails. The only other occupants were the grazing cattle.

On Saturday, the trail boss followed the lake's East edge out and the perimeter fence on the return leg.



With the gentle terrain and wooded trails meandering along the shoreline, one participant thought it a good place to introduce her new pack animals to the real world. It was her first time taking them on the trail after all the tedious hours of practice at home. The equines turned out to be a compatible team and the rider got lots of experience handling the lead rope in non-familiar territory. More experienced packers were quick to share their tips with the novice.



There were 3 rigs that camped overnight Fri/Sat and several more riders that came just for the Saturday ride and stayed for the pot luck supper. Sunday midday, a few riders took a 6-mile ride on the West edge of the lake before loading their trailers and heading home.

The group did meet up with a bald eagle about halfway through the 10-mile ride. The leafless trees allowed a stunning view from horseback.

MidValley Unit TOP HANDS

By James King

Dollarhides Selected 2014 Top Hands

By Carl Perry

The 2014 Top Hand awards were presented at the 2015 Rendezvous in Angels Camp during the Friday night dinner. The sound system was not loud enough to overcome the voices of all the enthusiastic



BCHC members. The Mid Valley Top Hand was announced and I did not even hear the names.

The Top Hand award is chosen by the President and that would be me. The team I chose this year is Doug and Cathy Dollarhide. These two have contributed countless hours of service to Mid Valley events. Just to mention a few, Doug has been our parade chairman since he became a board member. He also helped us with the intercollegiate pack team last year and helped the team at Bishop Mule Days. He has organized rides for the membership to enjoy and has given the invocation before some of our meals. He has been one of the work party leaders at Clark Fork every year. Cathy, his right-hand gal, has taken charge with youth activities for several years. The last couple of years she's handled the raffle at our annual Christmas party like it was no trouble at all and with no complaints. Together Doug and Cathy took charge of the post-registration details of the 2014 Columbia Christmas Parade. There are many more instances in which these two have rendered their physical services. Doug and Cathy are always there when the need arises. I personally want to congratulate the Dollarhide family, including Garrett, for all the community service they do for Mid Valley Unit.

Thank you, again, Doug and Cathy Dollarhide!



Unit News

Horse Camp Gets New Water Tank And Trough!

Submitted by Lisa Deas - Lake Mendocino Unit - Reprinted by permission of Friends of Boggs Mountain

Several years ago, the Lake-Mendo Unit of the Back Country Horsemen (BCH) established a horse camp on a beautiful level site at the intersection of Roads 500, 530 and 400. Paul Villanueva, President of this BCH unit, has worked hard with other volunteers over the years to add more facilities: a highline, vault toilet, and fire pit. But it has been a dilemma as to how water could be brought to the camp and made available for horses which can require 5-10 gallons of drinking water a day.

FOBM and BCH held several discussions to find an economical, low impact solution. Finally this past winter, we decided on a 2,500 gallon water tank, providing a gravity-fed trough (covered to minimize evaporation and debris) located at an elevation at least 2 feet lower than the bottom of the tank. The water would be used solely for equine consumption (with signage indicating this) so as to minimize tank refills. A float valve in the trough will regulate the amount of water drawn from the tank.

We successfully acquired a grant from the Cobb Geothermal Mitigation Fund Committee for the materials. Paul planned the system, and with other BCH members, installed the tank, pipes and trough in a couple of weekends this past spring.

FOBM has committed to helping pay for the next two tank refills. With the establishment of a silent ranger at the horse camp, we hope that equestrian campers can help fund the refills as well.



We are grateful to the Cobb Geothermal Mitigation Fund Committee for their generous assistance, to the BCH volunteers who worked tirelessly on this much-needed facility, and for the great collaboration between FOBM and BCH leaders to finally make this happen! Let us know if you'd be interested in volunteering with FOBM to support our mission to enhance the visitor's experience at Boggs!

<http://boggsMountain.net/2015/05/boggs-horse-camp-water-tank-trough/>

Unit News

29th Annual

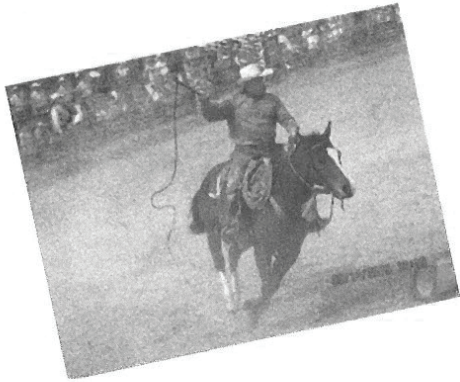
BCHC RENDEZVOUS

WORKING TOGETHER TO SAVE OUR TRAILS

SAVE THE DATE!

March 18, 19, 20th 2016

at the Calaveras Fair Grounds
Angels Camp, CA



- U *Horse and Mule Training Clinicians*
- U *Stock Packing Seminars and Contests*
- U *Youth Classes*
- U *Gentle Use/ Leave No Trace Classes*
- U *Trail Challenge*
- U *Scores of Vendors [4horses@sbcglobal.net to book your space]*
- U *Western Art Show*
- U *Pack Scramble!*
- U *Dutch Oven Cook-off*
- U *Beer & Wine tasting*
- U *Cowboy Church*
- U *Banquet with live music*
- U *Raffles and Auction*



**RENEWING OUR PARTNERSHIPS
TO SAVE OUR TRAILS**

bchcalifornia.org/rendezvous



BCHC-SD LOS VAQUEROS WORK PARTY & CAMP-OUT

From SDU Newsletter – Submitted by Patty Hayden

The BCHC-SD Los Vaqueros work party and campout was held April 30th through May 3rd in Rancho Cuyamaca State Park. Although we had a small turnout this year of both campers and trail workers everybody had a great time.

On Saturday we hiked up the Stonewall Peak Trail with two of the park trail crew (John and Jason) and cleared .6 mile of the trail. (According to park staff, this is what they would normally expect from an 18-person inmate crew). Not bad for a bunch of old timers. Mark Kukuchek brought his Stihl power hedge trimmer and it worked pretty well on the Ceanothis.

Unit President Patty Heyden organized and ran the campout and hosted dinners and a campfire Friday and Saturday night. Colorado Desert District Superintendent Dan Falat and Cuyamaca Supervisor Kevin Best both stopped by and expressed their appreciation for the unit doing the work party.

Once again BCHC-SD has taken their time to not only work with public land managers representing the equestrian and trails community but to invest “sweat equity” by going out and actually working on trails.

The photo shows (Back row) Jason from State Parks, Martin Jorgensen, Daryl Hem, Patty Heyden, Mark Kukuchek, Cheryl Wegner, Jeani Buchanan. Front row- John from State Parks.



SPECIAL ANNOUNCEMENT:

Rhonda Strickland, our Editor for the last several years is going to step down and our new BCHC News editor will now be: Ralph A. Clark. Newsletter contact information will be sent out to everyone and Rhonda will forward any information that she receives regarding the upcoming issues.

Unit News

Top of the State Unit Mentor Program Our Continuing Mentoring Opportunities

Many folks that sign up as members are new to horses and mules, new to riding in the backcountry, or just simply new to northern California and southern Oregon. Over the course of time we have learned that many new members don't participate in group functions primarily because they don't want to 'hold things up or lack the confidence to enjoy what we do. We want all members to know that the Education Committee has initiated a Mentor Program that will benefit the Top of the State Unit.

If you are interested in being mentored by an experienced backcountry horseman (or woman) to gain the skills and confidence you desire, please call Penny Wells at 468-2715. She will either personally take care of you, or find somebody who knows what you are looking for. Skills that a mentor can teach you include:

- Groundwork
- Saddle fit and tack (what works for you)
- Knowing your animal
- What to pack in your saddlebags
- Increasing your enjoyment of your animals
- Loading in a trailer
- Driving with a trailer
- Backing up a trailer
- Safety
- ... the list goes on.

We are also looking for experienced folks within our group to sign up to be mentors. As a mentor, you can share your knowledge of, and passion for, animals and the backcountry. Take some time to help members of our unit become more confident backcountry horsemen. Whether you are experienced or novice, want to teach or learn, please contact our Education Committee.



675 N 600 W Suite #3,
Logan, UT 84321
(800) 742-7047

Logan Coach Rebate Program Exclusive to BCH Members

As a special rebate for Backcountry Horseman members, Logan Coach will give the following rebates/donations when you purchase a new Logan Coach trailer:

- .5% of Retail Price Paid Donated to BCH State Organization
- .5% of Retail Price Paid Donated to Customer's Local BCH Chapter
- .5% of Retail Price Paid as Rebate back to Customer

Ask Your Logan Coach Dealer for details.

See the 2012 Logan Coach Line at www.LoganCoach.com

All you will need to get the rebates sent out is a copy of the invoice for the Logan trailer you purchased from the retail purchaser & what your unit & state is.

You can send that directly to Steve Hales ~ Logan Coach
Phone (435) 752-3737 Fax (435) 752-3756

Double C Performance Mules & Donkeys

Where Performance Counts

JoDe Collins

Trainer/ Owner

Lincoln, Ca

(916) 765-4585

on facebook.com

Double C Performance Mules & Donkeys



MAIL YOUR BCHC MEMBERSHIPS TO:

BCHC Membership
1280 State Rt. 208,
Yerington, NV 89447

The deadline for submissions for the
FALL 2015 EDITION

of the Backcountry News is:

August 17, 2015

If you are interested in being the BCHC News
Editor please contact the BCHC Secretary:

Kaye Bruns

(661) 803-5075

kowgrl@charter.net

Unit News

Top of the State Unit Shackleford Ride March 29th

Article and Pictures by Shari Kaufner

On the 29th of March, seventeen Top of the State members, rode past Log Lake in the Marbles and had lunch. Can you believe it?



NO
SNOW!!

Robert & Laurie Robustellini put on a great ride and everyone enjoyed the scenery, the smell of the woods and being back in the saddle. All the horses and mules did great and some of us riders did too.



**CONLIN
SUPPLY**
COMPANY, INC.
Sign of Quality, Value & Service

*Supplying California
for over 20 years*

Pipe & Steel
Fencing
Hardware & Tools
Ranch Equipment
Orchard Supplies
Animal Feed
Supplements
Vaccine
Pet Supplies
Ropes & Tack
Western Apparel
Work Apparel
and More!

**Two locations
to serve you!**

576 Warnerville Rd.
Oakdale, CA 95361
(209) 847-8977

717 East Childs Ave.
Merced, CA 95341
(209) 725-1100

It was fun to see everyone and we had some wonderful refreshments afterwards at the Trailhead.

See you on the next ride, Shari.

Welcome, New Members!

WELCOME, NEW MEMBERS!

Eastern Sierra	Ray and Karen Brown
High Country	Carol Trebian and Debra Frost Kathy Perkins
High Sierra	Robin and Ron Thompson
Kern River Valley	Patrick and Carrie Shreffler
Kern Sierra	Debbie and Bill Kelly
Lake Mendocino	Erlyne and Ed Schmidbauer
Mid Valley	Eldon and Adele Angle Linda Breien Janet and Dana Brown Susan Ferrer Jennifer Marshall Sharon and Loren Mendes Renee Owing-Largorio Sandy and Even Rahilly Lori Sala Larry Souza Brad Ward, Martha and Samantha Ramirez
Mother Lode	Edwin Bechtel Skott E. Borello Jacob Braun Michelle Gould Chelsee Guerrero Patty Haskell Joe Hoover and Nancy Marquardt Debra Lawlor and Paul Beatty Carrie Marsh Don Ramsey Gale Rotenberg Levi Smith
North Bay	Maureen Wendele
Redshank Riders	Zorina Bennett Chuck Delao Vincent Spioggia
Redwood	Britni Anderson Vicki Kurtz Tim and Judy Taylor
San Diego	Robin Campbell
San Joaquin Sierra	Lisa Spounias and Marven Pearce Hanna Rousey Gary W. and Susan L Van Sickle

NEW MEMBERS, *continued*

Santa Ana River	Dale A. and Lynn J. Crawford Sabrina Geisel Dave and Liz Gordon Nathaniel and Alyson Houston Donald and Vivette Lund Edward Murphy Kerri Olobri Kevin Turvey
Sequoia	Jamie Hedge Bud and Marjorie Mayfield Tom E. Shaw
Shasta Trinity	Dr. Bill and Jill Gray
Sierra Freepackers	David and Thelma Howse, Jerry Harbottle Jennifer and Grant Fleming Irene Scott John and Laurie Wagoner
Top of the State	James and Mollie Brodie Sam Commarto Janette Storer

These new members have joined BCHC
between
January and April 2015

WANT TO START A NEW UNIT?

If there is no unit in your area and you are interested in starting one, contact BCHC Secretary Kaye Bruns for more information.

(661) 803-5075

Information

GoodDining
You Dine, We Give!



Dining to Support Back Country Horsemen of America - BCHA
Your Supporters Can Earn Up To 6% When They Dine

www.goodsearch.com

SAVE TIME AND MONEY BY SHOPPING ONLINE!

Earn **cash back** while shopping from home! Search for deals such as free shipping, instant savings, coupons, and more by visiting www.zamzuu.com/bchc

Some of the key features you'll find on the BCHA shopping website include:

- Apparel and Accessories
- Automotive
- Electronics
- Health and Beauty
- Home and Garden
- Movies, Music and Entertainment

The Ultimate Shopping Experience!

Please help to make this exciting new program a success for the Backcountry Horsemen of California!

Book all travel at:
www.ytbtravel.com/bchc



Start shopping on-line at:
www.zamzuu.com/bchc

THE BCHA EDUCATION FUND IS A 501(c)3 NONPROFIT ORGANIZATION

A donation in the amount of your choice is tax deductible.

You can now donate easily and quickly, using a major credit card or PayPal.

Simply go to the BCHA website (bchcalifornia.org),

Scroll down to the bottom of any page, press the **DONATE** button and help us in our many efforts.

THANK YOU!

Well, I have decided that it's time for me to hand over the reins of this newsletter to someone new. Looking back over the last 5 years that I have been the BCHA News editor I would like to say that I have learned a lot.

Especially what a great, dedicated group of people the BCHA and BCHA members are. I will definitely miss the interactions with all of the contributors to this paper however, it is time to move on and allow another person to use their expertise & knowledge to put this paper together.

Be sure and remember, this paper cannot have any content unless you, the members, supply it.

Please consider becoming our new editor. If you are interested contact our secretary:

Kaye Bruns
(661) 803-5075
kowgrl@charter.net

I will be around to help the new editor become acclimated and I want to say thank you to everyone who has helped me over the years knowing you will do the same for the new person who takes over this job.

~ Rhonda L. Strickland ~
Redshank Riders Unit

Recognition of Special Individuals

THANK YOU FOR YOUR SUPPORT!!

Benefactor Funds are used in a variety of ways to support BCHC's Public Lands activities. Uses of Benefactor Funds may include but are not limited to hiring consultants to perform in-depth reviews, financing special studies and reports, and reducing out-of-pocket travel expenses for those who testify at state and federal hearings.

BENEFACTORS

Antelope Valley	Stephen and Mary Ann Colf Heidi Furer
Eastern Sierra	Bill Carter Susie L. Harms Michelle Layne (Tom's Place Resort) Troy and Susie Patton
High Sierra	James B. and Judy L. Waggoner Richard and Dena Cochran Carl and Frances Dobler Ruth Gerson Nancy Hamill Dennis and Cathlyn Keller
Kern River Valley Kern Sierra	Joy and Jack Wikoff Brad Allen of Rosedale Farrier Supply Robert L. Anderson Boyce 'Buzz' R. and Joann F. Caffee Mylon Filkins, DVM and Pat Larry and Pat Mumford
Lake-Mendo Los Padres	Carol S. and Bill Biggs Robin Cederlof William Chaides and Nancy Kimmell Si and Karen Jenkins Janice and Phillip Kissel James McGarry Glenn and Karen Teixeira
Mid Valley	Jay and Elizabeth Barnes Gary A. and Michelle L. Cain Dennise A. Davis Carol Jo Hargreaves and Larry Schneider David and Kristine Kraft Bob and Sandra Magee MID VALLEY UNIT - BCHC Dan and Toni Peterson
Mother Lode	Ken and Gerry Bourn Donna Jones Furlow Al Jagow Karen Schwartz

BENEFACTORS, continued

North Bay	Julie Araiza and Miranda Bender Sarah and David Schoen
Redwood San Diego	Maris Hawkins Allie Heary Walt J. and Suzie Kirkwood Bart and Vonnie Switzer
San Gorgonio Pass	Peter and Diana Kriger Ron and Korky Robertson
San Joaquin Sierra	Kenneth and Diane Dalby Fred and Suzanne Gleason Larry Nishma Knapp-Yosemite Trls Pk Sta Stephen and Jill Naylor Patrick and Karen Warnshuis Kathryn C. and John E. Bennett Steve Ladrigan J. Michael and Linda L. Lane Laure Stern Jamie Wilson, DVM
Shasta Trinity	Dean and Laura Angelides Lyle and Lauren Charter Alice Eileen Cox Joe R. Wilburn
Sierra Freepackers Sutter Buttes	Joyce and John Granger Corky Layne Ulla Park

PATRONS

High Sierra	Jeff and Alice Kampen Marty Morehart Karl and Trish Pendegraft
Mid Valley	Lloyd and Susan Erlandson Dennis M. and Loretta Serpa
Redshank Riders Sequoia	Ken and Allison Renck Jim and Pat Holly Larry and Jody Young

MT. WHITNEY

Kern River Valley Mid Valley	*Ken and Betty Finch Teri Arrington
---------------------------------	--

*A notation to Ken and Betty Finch's recent Mt. Whitney membership. It is "*In memory of Toby Horst*"

BCHC Units Around the State

Antelope Valley

PO Box 84
Pearblossom, CA 93553
KellyCarle
(661)944-1621
iacarle@yahoo.com

Eastern Sierra

PO Box 157
Olancho, CA 93549
Susie Patton
(760) 764-2850
bludog60@hughes.net

High Country

PO Box 161
Milford, CA 96121
Ernie Coe
(530) 253-2177
echorshoeing@frontiernet.net

High Sierra

PO Box 6938
Visalia, CA 93278-4427
Dick Cochran
(559) 732-1607
rochran@visaliaalaw.com

Kern River Valley

3561 Jeffrey St.
Lake Isabella, CA 93240
Larry Cigainero
(760) 379-5920
larrybchc@aol.com

Kern Sierra

16347 Stephenie Rd.
Bakersfield, CA 93314-9669
Scott Roger
(661) 703-9303
hard1water@gmail.com

Lake-Mendo

PO Box 191
Potter Valley, CA 95469-0191
Paul Villanueva
(707) 263-0147
Villan13@pacific.net

Los Padres

606 S. Hart Drive
Santa Maria, CA 93454
Richard Waller
805.489.8885
homeranch@gmail.com

Mid Valley

PO Box 1709
Modesto, CA 95353
Carl Perry
(209) 632-9100
hayloftpigeon@aol.com

Mother Lode

PO Box 2088
Elk Grove, CA 95759-2088
Mike Kohlbaker
(916) 214-6505
4horsen@sbcglobal.net

North Bay

PO Box 9435
Santa Rosa, CA 95405
Thor Bodtker
(415) 328-4545
thunder.t@hotmail.com

Redshank Riders

PO Box 383
Aguanga, CA 92536-0383
Michael Lewis
(951) 760 - 9255
mike@stumblinranch.com

Redwood

PO Box 6023
Eureka, CA 95502-6023
Carole Polasek
(707) 786-9637
cell: (707) 599-8021
muleride@frontiernet.net

San Diego

236 Oak St
Ramona, CA 92065-1952
Patty Heyden
(760) 788-0354
pheyden54@gmail.com

San Geronio Pass

PO Box 321
Calimesa, CA 92320
Pete Kriger
(909) 910-4619
pkrigerjr@yahoo.com

San Joaquin Sierra

PO Box 25693
Fresno, CA 93729-5693
Joe Kaminski
(559) 7433-9170
kaminskielcan@gmail.com

Santa Ana River

PO Box 736
Norco, CA 92860-8062
Bill Moser
(714) 336-7760
moser553@gmail.com

Sequoia

PO Box 456
Springville, CA 93265-0579
Sandy Oates
(559) 784-4912
president@bchc-sequoia.org

Shasta Trinity

10855 Beaver Rd
Oak Run, CA 96069-9602
Alan Hill
(530) 221-8531
athill2011@gmail.com

Sierra Freepackers

PO Box 64
Oakhurst, CA 93644-0064
Mary Odell
(559) 658-7563
modell@sti.net

Sutter Buttes

110 Medley Lane
Oroville, CA 95965
Bob Gage
(530) 521-7369
bobgage@wildblue.net

Top of the State

PO Box 461
Etna, CA 96027-0461
Doug Kaufner
(530) 340-0667
1whitemule4luck@gmail.com

Questions? Membership Matters

Contact Membership Coordinators are Chip and Linda Herzig. They will be happy to address your questions or concerns. Chip and Linda may be reached Monday through Friday.

By mail: BCHC Membership
1280 State Rt 208
Yerington NV 89447

Email: membership@bchcalifornia.org

Phone: (775) 463-3634



Planning a Trip? Use

**BCHC
EARNS 60%
OF THE
COMMISSIONS!**

**For the Latest Deals
go to**

www.ytbtravel.com/bchc

- You will find the same airlines, hotels, rental cars and cruises as on other travel websites!
- You'll get great travel prices!
- Each time you book travel a portion of the travel commissions will go to support BCHC!

It's that simple!

BCH
GETAWAY

2015 Rendezvous Sponsors

No. 1 RAM TRUCK DEALER ★
IN LOS ANGELES COUNTY

HUNTER

RAM OF THE WEST

DODGE // Jeep
 Lancaster, CA

RAM CERTIFIED AGRICULTURE DEALERSHIP

New 2015 Ram

★ **Special Deals for Backcountry Horsemen of California** ★
 Bill Czirr - Fleet Manager - Direct Line # 661-810-7725
 email: Fleet@HunterDodge.com www.HunterDodge.com

WIS&G
 Winton Ireland, Strom & Green
Insurance Agency

Local Feel. Global Expertise.

Farm, Ranch & Equine Expertise | Comprehensive Risk Management Services

OSHA Compliance & Injury Prevention Programs

Business & Benefit Consulting Services | HR, Legal & Accounting Consulting

Safety Training Seminars & Materials

For the *Integrity* of Your Horse's Health



Adult/Senior Growth Lite Low Starch Mare/Foal Performance Rice Bran

Integrity® offers a balanced feed for ALL horses to have:

- Enhanced coat** - from healthy sources of fat
- Healthy digestion** - from soluble fiber sources such as beet pulp
- Fixed ingredients** - same ingredients used in every bag
- Focused energy** - does not contain the hot grains corn or barley
- Locally made** - all feed made in Peris, CA

Manufactured By
Star Milling Co.®

Find a feed store near you



(800) 733-6455 www.starmilling.com [/integrityhorsefeed](https://www.facebook.com/integrityhorsefeed)



wintonireland.com | Since 1913 | Lic # 0596517

MODESTO (209) 529-3480 | TURLOCK (209) 667-0995
 FRESNO (559) 432-8200

YOSEMITE FARM CREDIT

Matt L. Beechinor
 Assistant Vice President
 Senior Loan Officer

Office: 209-668-3522
 Fax: 209-634-8296
 Mobile: 209-404-9756
mlb@yfc.ag
www.yosemitfarmcredit.com

810 W. Monte Vista Ave.
 Turlock, CA 95382
 P.O. Box 1525
 Turlock, CA 95381

Please Support Our Sponsors
 See the full list of sponsors on page 16