

BCHC
BACKCOUNTRY HORSEMEN
OF CALIFORNIA
13061 Rosedale Hwy
Suite G, Box 217
Bakersfield, CA 93314
ADDRESS SERVICE
REQUESTED

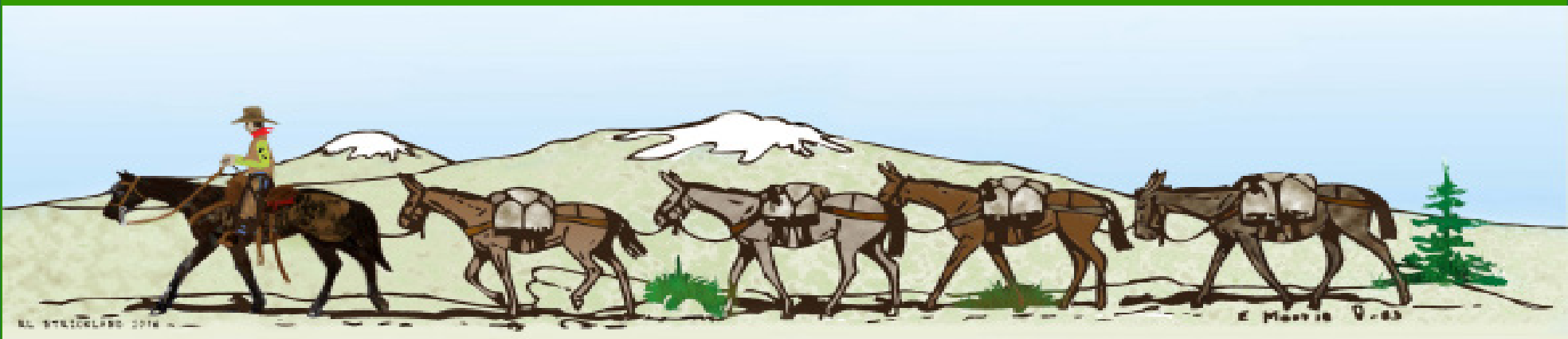
FIRST-CLASS MAIL
PRESORTED
U.S. POSTAGE PAID
SACRAMENTO, CA
PERMIT #328360

The Backcountry News

Volume 35, Issue 3

The Official Publication of Backcountry Horsemen of California

SUMMER 2023



YOUTH - The Future of BCHC

HERE'S WHAT'S GOING ON IN BCHC'S YOUTH PROGRAM

By Tammy Bozarth, VP of Youth Education, with Carol Jo Hargreaves

As Franklin D. Roosevelt once said, "We cannot always build the future for our youth, but we can build our youth for the future." BCHC members clearly recognize the importance of bringing youth into our organization to keep it viable, forward-looking, and relevant to future generations. Participation in BCHC activities benefits youth, too, by helping them discover, learn, create, and compete. In addition, they develop skills in areas that will prove useful later in life, not only as an adult within the Backcountry Horseman organization but also in family, employment, and community activities.

BCHC has been building its Youth Program for several years. New membership types were developed to encourage youth participation: Young Adult Membership for adults age 18 to 24 years and Youth Membership for kids between 12 and 17 years of age with parental permission. Child and youth activities are included at each Rendezvous, not only to entertain kids but also to teach them new skills and to introduce them to BCHC, its mission and purpose.

Many individual BCHC units already actively promote and participate in youth activities. In fact, there are currently 10 units with a total of 36 members participating in BCHC's Youth Card Program.

The Summer 2023 edition of The Backcountry News is dedicated to coverage of BCHC's Youth Program. See page 13, the centerfold, pages 16-17, and the back page for photos and information about what BCHC and its various units are doing to encourage youth participation.



Today's youth are the leaders of tomorrow!

The Backcountry News

An internal publication of the Backcountry Horsemen of California

Editor Carol Jo Hargreaves

BCHCNewsletter@gmail.com

BCHC Official Website: www.bchcalifornia.org

Printed by The Manteca Bulletin

Publication Information: The Backcountry News is the official journal of the Backcountry Horsemen of California, Inc., published four times per year. All rights reserved. It is an independent publication with news and information of interest to Backcountry Horsemen members, with an average circulation of approximately 2,000 per issue. Annual subscriptions are \$15 for non-members. Nonprofit postage paid at Manteca, CA.

Who is BCHC? The Backcountry Horsemen of California, Inc. is a 501(c)3 nonprofit organization incorporated in the State of California, March 13, 1990, with a 501(c)4 education foundation established in 2007. The Backcountry Horsemen of California, Inc., reserves the right to refuse any articles and/or advertisements that are not consistent with the Backcountry Horsemen of California's Objectives and Purpose statement. Other material will be printed at the Editor's discretion.

Disclaimer: Articles and advertisements that appear in The Backcountry News do not necessarily reflect the position or opinion of BCHC or its officers and members. Nor does publication of said articles and advertisements constitute endorsement of the views or of the goods or services offered therein that they may express. Accuracy of all material is the sole responsibility of the authors. BCHC is not responsible for unsolicited material of any kind.

Reader Submission: The Backcountry News welcomes reader contributions, event and calendar dates, and unit news. These will be printed on a space-available basis. Submissions should be sent in a Microsoft Word format to include author and photo credits. Longer articles are subject to edit for space at the discretion of the Editor. Photos may not be returned.

Deadlines: Advertising, announcements, pictures and other copy must be received at The Backcountry News by the deadlines listed below.

Edition	Deadline
Fall 2023 Edition	October 15, 2023
Winter 2024 Edition	January 15, 2024
Spring 2024 Edition	April 15, 2024
Summer 2022 Edition	July 15, 2024

Advertising Rates per Issue: Rates effective January 2012. All ads must be paid in advance.

Number of Issues:	1	2	3	4	
Full Page	\$150.00	\$142.50	\$135.00	\$127.50	} Cost per Issue
Half Page (h/v)	\$100.00	\$95.00	\$90.00	\$85.00	
Quarter Page (h/v)	\$80.00	\$76.00	\$72.00	\$68.00	
Bus. Card (h/v)	\$25.00	\$23.75	\$22.50	\$21.25	

Advertising: All ads must include all fonts and images used in artwork. Ads must be at a resolution of 300 pixels per inch at the actual size used in the artwork. Mail payment to the BCHC Treasurer. Checks returned from the bank will have a \$25 return check fee. No advertising will be accepted from advertisers with outstanding balances. Liability by The Backcountry News shall not exceed the space occupied by the error. Never shall The Backcountry News be liable for any general, special or consequential damages. All claims for adjustments must be made within 30 days of the first publication of said ad.

2023 EXECUTIVE COMMITTEE

Mike Hughes, President · (760) 223-0608 ·

4HRanch@earthlink.net

Jamie Wilson, 1st VP · (559) 202-7216 · drjamie91@gmail.com

Alyssa Alvarez, 2nd VP, Sergeant at Arms · (858) 248-9296 ·

bchc.coordinator@gmail.com

Susie Patton, Secretary · (760) 764-2850 ·

bludog46@gmail.com

Lynn Joiner, Treasurer, Chaplain · (661) 747-6347 ·

lynnjoiner7@gmail.com

Stacy Kuhns, VP of Education · (909) 633-1705 ·

stacykuhns@aol.com

Chip Herzig, VP of Membership · (775) 463-3634 ·

chipherzig@gmail.com

Troy Patton, VP of Public Lands · (760) 764-2850 ·

outdoortroy@gmail.com

Tammy Bozarth, VP of Youth Education · (661) 322-2545 ·

spashiners@yahoo.com

Michael King, Immediate Past President · (209) 606-8323 ·

mickngig@sbcglobal.net

Randy Hackbarth, BCHA Nat'l Director · (530) 626-0571 ·

trlryder@pacbell.net

Larry Shuman, BCHA Nat'l Director · (530) 526-0590 ·

lshuman62@gmail.com

Terry Jorgenson, BCHA Alt. Nat'l Director · (760) 802-1420 ·

tlh9749@yahoo.com

2023 COORDINATORS

Accounting - Weir and Associates · (661) 323-1514

Annual Meeting - Susie Patton · (761) 764-2850 ·

bludog46@gmail.com

Insurance - Jamie Wilson · (559) 202-7261 ·

drjamie91@gmail.com

Membership Communication Coordinator - Alyssa Alvarez, 2nd

VP · (858) 248-9296 · bchc.coordinator@gmail.com

Newsletter Editor - Carol Jo Hargreaves · (209) 988-5831 ·

BCHCNewsletter@gmail.com

Rendezvous General Chairman - Stacy Kuhns ·

(909) 633-1705 · stacykuhns@aol.com

Saw Coordinator - Mike Lewis · (951) 760-9255 ·

stumblinl55@gmail.com

Volunteer Hours Reporting - Alyssa Alvarez, 2nd VP ·

(858) 248-9296 · bchc.coordinator@gmail.com

Webmaster - Jacque Murphy · (707) 498-6648 ·

brennaluet@hotmail.com

Youth Activities, Custodian of Records · Tammy Bozarth ·

(661) 332-2545 · spashiners@yahoo.com or

bchc_cor@yahoo.com

For more BCHC information, see our website: bchcalifornia.org

PRESIDENT'S PAGE

ONE SPADE YOUTH PACKERS AND REID HOPKINS, THE MAN BEHIND THE BRAND

The BCHC Kern River Valley Unit has assisted and mentored youth in the One Spade Youth Packers organization over the past decade. This group, ages 8 to 17, compete at Bishop Mule Days on an annual basis and have consistently produced World and Reserve World Champions since 1995.

in equipment for Pyles Boys Camp. Pyles catered to at-risk and low-income individuals out of Southern California. During this time, I was introduced to the Bishop Mule Days Celebration in Bishop, California. With Pyles' administration's approval, I took a team of boys and mules to compete. Eventually Pyles' lawyers got involved and ended the program as being too hazardous. Kids cannot grow up in a vacuum; it seems that anything that has merit or gives life experiences has some danger attached to it.

As a result, we stepped away from Pyles and formulated the One Spade Youth Packers under the auspices of the California Recreational Foundation, a 501c3 nonprofit organization dedicated to promoting the safe, responsible, and sustainable use of off-highway vehicles on public lands. When that happened, we were able to accept donations. As anyone who owns horses or mules knows, it is expensive to keep them and the additional expense of going to Mule Days to compete was an added burden. BCHC units' and members' donations have been instrumental in our success.

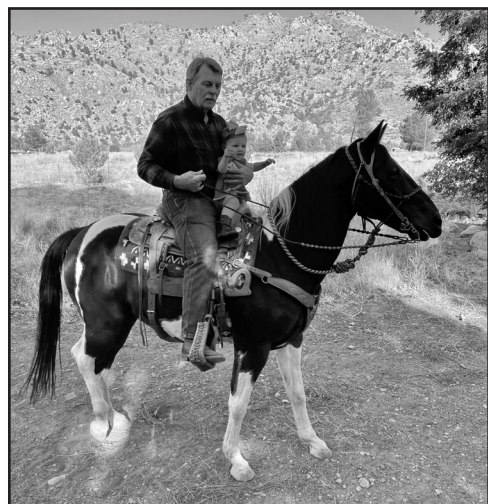
This all brings me to the core values we teach as a foundation to One Spade Packers youth. The most important is *honesty in all things*. We don't do grey areas. You know in your gut when you are doing it if it is right or wrong. Other values are *personal responsibility* and *ethics*. These go hand in hand as you always need to say what you mean and mean what you say. Make your word stand for something. These kids, for the most part, had never been on a team before. Having others relying on you, including the animals in your care, was a new concept.

We also teach *service above self*. Such important life lessons as helping to serve food to the needy, assisting the Exchange Club and Masons in their projects, learning about volunteerism now and for the future. One Spade Packers has helped two kids go to horse shoeing school and three kids went to the Caterpillar program. Based on their grades and application, if chosen, they can go to Sacramento for nine weeks for classroom instruction. Caterpillar provides housing. Upon return to Bakersfield the students get hands-on experience which they are paid for, and they are given \$16,000 in tools if they complete the two-year program.

One youth, Luke, now in his fourth year, was a success story. He has been given a lucrative contract working in the Antarctic. Another success story is a young woman who stayed with us and has recently been accepted to veterinary school. We have worked with youth who have been in our program for up to six years. The goal of our program is to help develop these young folks into responsible, productive citizens.

The buckles and awards are a wonderful byproduct but are not our focus. We also teach respect for the mentors, BCHC and others, who give freely of their irreplaceable time. Without their participation and contributions this would be an insurmountable task and we are deeply appreciative to the BCHC organization.

See **PRESIDENT'S MESSAGE**, page 5



**BCHC President
Mike Hughes**

The state BCHC in conjunction with various local BCHC units contribute annual donations to further the progress of this worthy group. Financial aid arrives in addition to equipment, time and expertise given by individuals within the BCHC membership.

In my role as BCHC President, I felt it would be appropriate for members to become knowledgeable about the man behind the brand who helps facilitate the accomplishments these kids achieve. Earlier this year I interviewed Reid Hopkins to introduce him to you in a deeper way.

The following is Reid's story:

Mike: It is good to have you here today, Reid. So, tell me about what your driving force is and what your passion was to begin the One Spade Youth Packers odyssey.

Reid: Well, as a kid growing up in the '60s, I had a rough childhood. I became a runaway and eventually took an Orange Belt bus to the city of Wasco, where I arrived hungry and without any means of survival. I was sitting on the curb when a local farmer, C. H. "Frosty" Frost, approached me and asked about my welfare. He took me home to his wife who fed me. A friendship ensued and the Frosts eventually became my surrogate parents. Frosty had horses and mules that he used to periodically pack into Jordan Hot Springs. As there was no road into that part of the high country, we packed out of Sage Flat in the eastern Sierra. Frosty taught me how to pack along with many other valuable life lessons. At the time Jordan was owned by Clarence Purnell and I was hired on as his summer packer from 1964 through 1971.

In the early '70s, I became a USFS packer under the guidance and supervision of Bob Powers. I got acquainted with many of the high country pack station owners up and down the Sierra. I learned how to pack many different styles including the Aparejo, the Sawbuck and the Decker. For entertainment we listened to a shortwave radio that had only two stations, one of which was Wolfman Jack. We had no screens to look at back in the day. Those were the days!

I was at Jordan throughout the summer and eventually started packing

BCHC NEWS



**BCHC Editor
Carol Jo Hargreaves**

SUMMER DEDICATED TO YOUTH

Summer is more than half over and BCHC unit members throughout California are working hard to keep trails open for all to use. Several units share articles and photos of their projects with you in the Unit News section. The BCHC Executive Committee is working hard to serve you during the summer, too. Susie Patton penned an article about the EC Summer Meeting on page 4 with photos following.



**BCHC Secretary
Susie Patton**

EXECUTIVE COMMITTEE MEETS IN HILMAR

By Susie Patton, BCHC Secretary

The BCHC Executive Committee was privileged to be invited to Lloyd and Susan Erlandson's home to hold our summer meeting. It was beautiful and green with huge shade trees to sit under. We had planned to meet in the beautiful old barn, but the weather was so nice, we moved outside. Nine of our 16 board members were able to attend.

Experienced packers Stacy Kuhns and Mike Lewis of the Redshank Riders Unit recently learned something new about packing! Just when they thought they had seen it all, they were asked to help pack CAMELS! See their article and photos on page 7.

This edition of The Backcountry News is dedicated to the BCHC Youth Education Program. You will find many photographs of unit members working with youth in a variety of activities up and down the state (see pages 14-17 and the back page). Tammy Bozarth, BCHC's Vice President of Youth Education, is working diligently to have BCHC's new Youth Achievement Program ready to unveil at the October State Board Meeting. You will find her update about the developing "YAP," as she laughingly calls it, on page 13, accompanied by instructions explaining how to apply for your Youth Card – it's easy and quick!

Be safe and enjoy your summer!

DEADLINE FOR SUBMISSIONS FOR FALL 2023 EDITION

of the Backcountry News is: **OCTOBER 15, 2023**

Send submissions to:

BCHC Editor at BCHCNewsletter@gmail.com

WOULD YOU LIKE EXTRA COPIES OF THE NEWSLETTER TO PROMOTE BCHC AT AN UPCOMING EVENT?



Just let me know. I will order the copies and make arrangements to ship or deliver them to you.

~ Carol Jo, Editor

BCHCNewsletter@gmail.com or (209) 988-5831

We had a long discussion on how to entice more BCHC members to attend Rendezvous. Less than 1/10 of our members attended in 2023. Any ideas anyone has about how to make Rendezvous better attended, please let us know. (See Michael King's article about Rendezvous 2024 on page 15).

We are working on introducing a new program for youth that will allow youth to participate in BCHC activities and earn awards for their participation. You will be hearing more about this program in October. Membership is on a downhill slide for many units. We have lost about 120 members in the last three months. Discussion was held about how to stop these losses.

A subcommittee was formed to investigate a BCHC program that would fund our intercollegiate packing teams. The committee will investigate how to recruit teams to apply for funding for travel expenses, shirts, etc., for various competitions.

Randy Hackbarth, National BCHA Director, reported that BCHA is looking into a dues increase.

Although Mike Lewis, Saw Coordinator and CJ Hargreaves, Newsletter Editor were unable to attend, they filed detailed reports on the Saw Program and Newsletter updates. Jacque Murphy was also unable to attend but reported that the new BCHC website is up and running. If you have any questions, please let her know.

Officer Training is being scheduled for 2024 in the north, south and central parts of the state and we encourage all unit officers to attend a training held in their area. We have many new policies, bylaws and changes that will be addressed. All in all, the Executive Committee enjoyed good people and good food at the meeting and committed to lots of work to keep BCHC moving forward into the future.

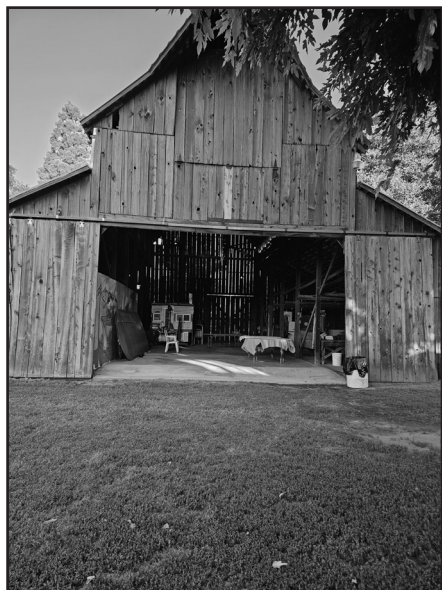
THE OCTOBER STATE BOARD MEETING WILL BE HELD OCTOBER 7th AND 8th IN SACRAMENTO. NEW AND RETURNING DIRECTORS AND OFFICERS NEED TO MAKE PLANS TO ATTEND.

WANT TO START A NEW UNIT?

If there is no unit in your area and you are interested in starting one, contact BCHC Secretary Susie Patton for more information:

bludog46@gmail.com

BCHC NEWS



The Summer Meeting of the BCHC Executive Committee was held in Hilmar at the home of Lloyd and Susan Erlandson.

Photos:
 Left - Erlandson's old barn
 Center - The EC hard at work.
 Bottom - A great outdoor cooking area was set up.



From PRESIDENT'S MESSAGE, page 3

One Spade Packers works with others to keep fences up in the wilderness in addition to trail maintenance, trail etiquette and basic wilderness principles. Many of our work projects last for weeks and our partnership with BCHC has revealed that this organization may be one of the last and best chances to keep stock in the high country and back country. From my perspective, as an old packer used to say, BCHC "exhibits commendable behavior," which allows the public access to public lands. Not only does One Spade Packers work trails and meadows but we also teach antique farming methods as a glimpse through a window into the past. We are all unpaid volunteers doing what is right for the kids and the future.

Through the youth and the organization's efforts we have been recognized as "Organization of the Year" by the Kern Valley Chamber of Commerce. Also, State Senator Shannon Grove presented One Spade Packers with a Proclamation for Service to the Community. Our unspoken motto is *Service Above Self and Service to the Community*.

Mike: This is a brief profile view into the man behind the brand, One Spade Packers.

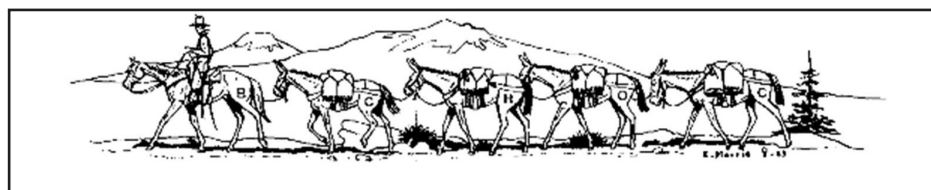
One Spade Packers can be reached at www.onespadeyouthpackers.org (<http://www.one.org>)
 By phone, (760) 223-1612
 Or at 9765 Sierra Way, Kernville, CA 93238
 Visitors are welcome, please call first.

Reid advised me that they are always looking for good, broke mules for the kids to use. Reid will deed a gift for your tax-deductible donation. (The deed of gift is a formal and legal agreement between the donor and the repository that transfers ownership of and legal rights to the donated materials.)

My hope is that this interview with Reid will help to inform members about a partnership organization that BCHC shares a vision with.

Until next time, signing off,

Mike Hughes



BCHC NEWS

INSURANCE UPDATE

Greetings, everyone!

As many of you embark on trail work projects, fish planting, and hopefully great pack trips, here is a reminder of what to expect from the BCHC insurance.

I receive a lot of questions about what is and isn't covered. I will share what I have learned from the insurance agent and the underwriter. Please be aware that each situation is unique, and there are often exceptions and gray areas to these policies.

The insurance we have as members of BCHC is third-party insurance. Think of yourself as the first party and another member as a second party. The general public, non-member is the third party; THEY are covered, not YOU. In other words, if you or your animal damages a vehicle owned by a non-member at a trailhead or parade, that vehicle is covered. If a non-member is injured, they are covered as far as liability for your actions, and to a limited extent for their injury. If you or another member or your animals are injured, BCHC insurance does NOT cover you! You would hopefully be covered by your own insurance, whether health insurance or homeowners. And it does not cover the other member, either. Apparently, the law states that one member can't sue another member in a typical liability situation in a unit activity.

As you can see, the BCHC insurance isn't a comprehensive, all things - for everyone policy. However, it does cover a lot of liability issues for the organization as a whole, and we cannot operate as an organization without it. There are only a handful of companies who will underwrite this kind of insurance, so the options are few. Luckily, thanks to the research by members of the Insurance Committee a couple of years ago, we were able to get our new policy, which covers many more BCHC activities than our old policy covered. For example, we now have overnight youth activities covered and parades are automatically covered.

The most important components for coverage for BCHC events are 1) that the event is an official sanctioned event of the State or of a BCHC unit, and 2) that all participants, especially non-members, sign a liability waiver before the event. Announcing an event in your unit newsletter, discussing it as an agenda item at a meeting, and listing it on your unit calendar or posting it on Facebook page are all ways to show that the event is a true BCHC event. That's what the insurance company would be looking for if there was a claim. While technically all members are covered at an event, it shows an extra level of informed consent and communication of risks if everyone signs a liability release. This is critical for events with stock and for trail work or saw clinics. Since most units have sign-in sheets to keep track of volunteer hours, mileage, etc., it only takes one more page to add the BCHC liability release to the sign in. And it's ok to have multiple

people sign on one sheet that is attached to one form, so there aren't multiple sheets of paper per person.

It only takes a little bit of pre-planning to design some convenient liability/event sign-in sheets for your unit. It could streamline the reporting process if a claim needed to be made. It is also important to check on your personal policies to see how they would cover you. Some homeowners policies will cover you when you are away from home, and some won't. There are also supplemental policies such as umbrella policies which can add coverage for certain situations. One such policy is the BCHC policy, available on the BCHC website. It is geared toward equine activities and is easy to apply for.

Many BCH activities have significant physical and liability risks. The BCHC third-party policy is an important piece of the protection available, but it is not complete coverage.

As always, I am happy to answer your insurance questions and forward requests for Additional Insureds. My email is the best method to contact me: drjamie91@gmail.com. Or text/voicemail (559) 202-7216.

Have a great season on the trails!

Jamie Wilson, DVM
BCHC 1st Vice President - Insurance

THE BCHC EDUCATION FUND IS A 501(c)3 NONPROFIT ORGANIZATION

A donation in the amount of your choice is tax deductible. You can now donate easily and quickly, using a major credit card or PayPal. Simply go to the BCHC website (bchcalifornia.org), scroll down to the bottom of any page, press the DONATE button and help us in our many efforts. THANK YOU!



EDUCATION

DID YOU SAY, CAMELS?

By Michael Lewis and Stacy Kuhns, Redshank Riders Unit



You never know what Michael Lewis and Stacy Kuhns will be asked to do on behalf of Backcountry Horsemen. Well, here goes our story.

Nancy Fife from another BCHC unit called us a couple times to come help a group she is involved with in Mojave. She asked if we could come help pack camels. Wait, what?! Did she say “camels”? She sure did. We did not say yes right away and then she was persistent, and we started asking questions. For a couple of years this group attempted to pack baby Joshua trees out on a historic trail to where the little trees would be planted. That area had a lot of damage due to a past fire. Nancy told us they need some help to learn how to pack SAFELY on the camels. Then she sent us a picture of a packed camel from the previous year and that did it, we *had* to help these folks! We needed to step out of mule/horse packing and lend a hand.

Leave No Trace principle #1 - Plan and prepare! We went to a local camel dairy and spoke with Nancy and the owner of the ranch. We learned a lot about those tall critters. Before we arrived, we discussed box hitch, etc., what to bring to the desert and, when we left, we completely changed the plan. The box hitch wouldn't work. You do all your saddling and such while the camel is sitting on its belly (they call this *cush*). Plan 2 - Decker. Hmm neither of us have a Decker set up. Phone calls went out to membership and we picked up the gear within the week. We realized Stacy did not know hitches for Decker, so an afternoon session together and we were up to speed. We got all the items that were needed - two Decker saddles, mantes, lash ropes, iron mules - and we were good to go.

The time came to head out to the Mojave Desert and in the early morning we rode together out to Goffs Schoolhouse on the Historic Route 66 in Essex, California. It is in the middle of nowhere, so we had time to talk. Morning conversations went something like, “What the heck are we doing and why?” We would laugh then chat more, drive and see more desert and more desert. We arrived at Goffs a bit after 1 o'clock and were greeted

by Nancy and a group of camel enthusiasts who had set us up with living quarters for the evening. (They paid to be part of this weeklong venture.)

We unpacked all our pack gear and got visiting with the group. We discussed who we were and that we are part of Backcountry Horsemen of California. We discussed our purpose and then we worked with them on hitches and discussed all the gear. They all had a great time. They were amazed with the bowline knot, so everyone got busy learning it. They also shared their stories of camel treks in Morocco and beyond. Stacy laughed very hard when one of the gentlemen in the group asked Michael why they do not have wild camels in the California desert. Michael handled the situation very well and said camels are not native to this area. The area is much better suited for burros. We did learn how fragile those big guys are. They can't walk a far distance at one time, they have big wide callused pads that can't do rocks, hills, or snow, but they are above the sand when they walk. They also tried to convince us that once we packed with camels we would not go back to mules. Seeing that we only pack in rocks, hills, and snow, we don't believe it'll ever happen. And, get this, they wear sandals when working with them. It's like being stepped on by a heavy pancake.

Later in the afternoon, the camel owners showed up with horse trailers. Whoa, wonder how the camels fit in the trailers? Do they lay down or what? The answer is yes, they do. We had both metal mules (for this week, we called them “metal camels”). The days were filled with hitches, tying knots, and having great conversations. We had them put their camel saddles on the barrels. Their saddles are very similar to a Decker saddle. We met a young man from back east that is a camel trainer who travels through the U.S. working with people and their camels.



The next morning, we took the panniers and lash rope and headed to the camels. Of course, Stacy had to say, “Hey, Mike, Mike, Mike,” and we laughed as we were heading to the camels. We worked with Herbie (a hump and a half camel). Jenn Portillo, from Reptacular Animals Ranch in Los Angeles, owns Herbie and she was quite a hand! It was impressive to watch

PUBLIC LANDS

PUBLIC LANDS UPDATES

By Troy Patton, VP of Public Lands

ASSEMBLY BILL (AB 233)

As many of you know, we have been asking our members to send letters to their State Senators in opposition to AB 233. This bill started when a small town in central California was upset that a horse trail crossed near a school where children walked. They decided to seek statewide action rather than handle this at the local level. What started as a bill to require horse owners

to pick up their manure on public land has been changed as it moved from the State Assembly to the Senate.

In its latest form in the Senate, the bill now has changed “horses” to “animals,” “manure” to “excrement” and “sidewalks, streets and public property” to “public and private property.” This is far more than just cleaning up after your horse – it is now allowing any agency (city, county, or other agency) to pass an ordinance that you must remove excrement from *any* animal on *any* property, whether public or private. What about livestock grazing on large parcels of land? What about the goat herds used on public land for fire control? What about your own land where you pasture your livestock? What about cattle drives that may cross public and private property like they do in our area? In my opinion, this bill is too over-reaching and unenforceable. However, if adopted by a town or city, it could be detrimental to livestock owners who could be harassed by difficult neighbors or developers who want their land.

This bill has moved quickly and seems to be changing frequently. I don't know if they thought the horse community would not be concerned if it said “animals” instead of “horses,” or if they thought taking out “public lands” would make us lose interest, but then the Senate put it back in and added “private property.” Did they think we would not notice? It seems very suspicious that this bill has been pushed forward when there are so many more important issues that our State Senate needs to be concerned about. The State Senate had the bill on the agenda for a third reading, however, it does not seem they got to it prior to going on break July 14. The Senators will return on August 14, and it may come up for a third reading and vote at that time. I urge each one of you to write to your State Senator and let them know you oppose this bill AB 233. If approved in the Senate this bill must go back to the House for approval as amended.

If this bill is not moved forward onto the Governor's desk by September 14, it will die and could be reintroduced in the next legislative session.

Thanks to all who sent letters opposing AB 233!

PINES TO MINES TRAIL

The Pines to Mines Trail is in the Tahoe National Forest and will link Nevada City, California, to Truckee, California. The proposed trail will be 68 miles long, 22 miles of which will be newly constructed trail. During the scoping period many BCHC members commented in opposition to the proposal to make all 68 miles a multi-use trail allowing Class 1 e-bikes. Of the 159 letters received, 73 of them opposed allowing e-bikes on the trail. Yet, the Tahoe National Forest came up with the Proposed Alternative to do just that.

BCHA and BCHC will be submitting letters opposing the Proposed Alternative (Alternative 2) in the Preliminary Environmental Assessment and endorsing Alternative 3 which would leave the entire trail as non-motorized. Our comments and concerns submitted during the scoping period were not answered and we will state that in our letters.

MAIL CHIMP

Just want to remind everyone that our Member Communications Coordinator, Alyssa Alvarez, does a great job getting information to all members with email addresses. The problem is that out of our 2,000 members, only about one-half have an updated email address. Please, if you have changed your email address, or would like to get the latest information from BCHC, give your email address to our VP of Membership, Chip Herzig at chiphergiz@gmail.com. Please encourage other members to do so also.



EDUCATION

From CAMELS, page 7

her work with him. We also got to meet Doug, a well-known camel owner from the Texas Camel Corps. He was very involved in helping observe and balance the load on the camel. We asked what would make a camel “spit” at us. It is what they do when pushed too far when you are working with them. BTW, it’s not really spit but cud (puke). They had Herbie saddled and ready. Jessica and her team grabbed the paniers and lash ropes and went to work. There were lots of smiles and high fives when they successfully tied on a set of boxes with a proper hitch. Then they said, “We will be able to pack those Joshua trees safely at the end of year now. Thank you.”

We attended Monday and Tuesday for the packing portion of their program. They treated us to fantastic meals made by Bill Moser and his wife from a neighboring BCHC unit. We had never heard of Goffs and it was such a treat. It was a museum way out in the desert. They had a Southern Pacific caboose that we checked out, that is also one of the trailers to rent during your stay. The phone booth from Outer Limits, a lot of farm implements and a working 10 stamp mill! What a fun two days.

Sometimes you must step out of your comfort zone and you will be amazed by what you learn and how you can impact others. We laughed and talked the entire drive home and were glad we took the time out of our work schedules to help this group. It was a great experience to work with the people and their camels, and to help them learn how to safely pack gear in the future. We are glad we could share the knowledge, but we both agree we don’t want to be riding our mules and horses and come across camels.



**BCHC VP of Education
Stacy Kuhns**

INTERN PROGRAM

By Stacy Kuhns, VP of Education

GRANTS

A big shout out to Lucy Badenhoop from Mother Lode Unit for all her hard work getting grants. To date she has acquired grants totaling \$15,000 for the 2023 season. Six thousand dollars came from the Rose Foundation and \$9,000 from Parten National Trails.

We appreciate all the unit funds that were donated also!

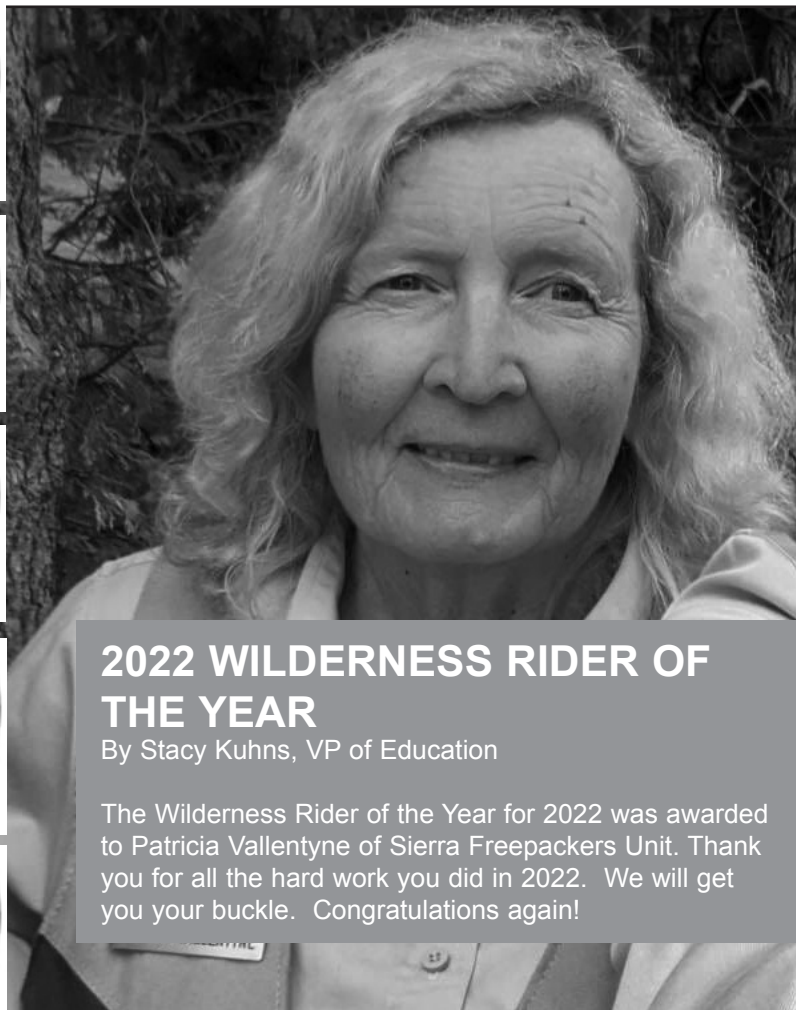


BAILEY MELLO APPLIED AND WAS CHOSEN AGAIN FOR 2023 BCHC INTERN

Bailey will again be working with Lee Roeser and Michael Morris. The USFS is excited to have her back! Other applicants were encouraged to work at a pack station to get more horse/mule experience.

INTERN 2024

We are currently planning to recruit an intern for 2024. If you know someone that might be interested in applying for this career development internship, have them contact Cindy McMurry at mcmurricindy@gmail.com



2022 WILDERNESS RIDER OF THE YEAR

By Stacy Kuhns, VP of Education

The Wilderness Rider of the Year for 2022 was awarded to Patricia Vallentyne of Sierra Freepackers Unit. Thank you for all the hard work you did in 2022. We will get you your buckle. Congratulations again!

Mark your calendar: OCTOBER STATE BOARD MEETING

**EXEC. COMMITTEE - Friday, October 6
STATE BOARD - Saturday, October 7**

**VFW Hall
South Sacramento, CA**

THANK YOU, RENDEZVOUS SPONSORS!

BCHC sincerely thanks the following 2023 Rendezvous sponsors for their generous support.

Please visit and support these businesses when you have the opportunity.

\$2,500 Sponsor



Star Milling Co.®



Integrity
Horse Feeds

\$500 Sponsors



\$1,000 Sponsor

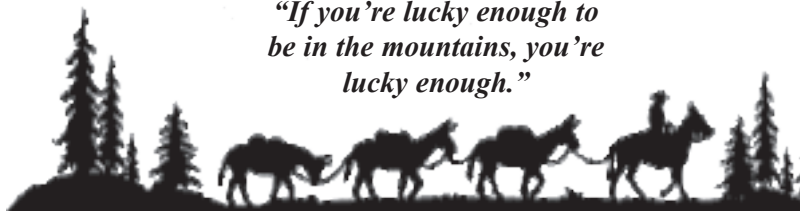


THANK YOU, RENDEZVOUS SPONSORS!

MORE RENDEZVOUS

Thank you for \$1,000 sponsorship from Terri Arington in memory of her late husband, Ron Arington. Ron was a longtime Ag teacher at Sonora High School. He was passionate about the back country, his horses and mules, his students and his wife.

"If you're lucky enough to be in the mountains, you're lucky enough."



MEMBERSHIP

STRANGE DAYS ARE UPON US

By Chip Herzig, VP of Membership

At the end of last year BCHC membership had grown considerably and, to put it mildly, we were looking pretty good to start the new year. We continued to grow in January, February and March, adding about 200+ members total. That 200 is a mixture of newbies and old returning members. Then April, May and June hit us. We undid all that growth!



BCHC VP of Membership
Chip Herzig

I do not understand why we are going up and down in membership ... if you have it figured out, please let me know so we can develop a scheme to keep all these folks that fall off the active list engaged and renewing in a timely manner!

What I do to remind folks that their membership is due is send them an email reminder in the month prior to their due date. Then, if they did not renew within their due date month, near the end of that month I send a hard copy reminder.

July looks to be in the "recovery mode" as some of the EXPIRED folks are renewing, which is great, but I'm still a bit frustrated and a whole bunch confused as to why this is happening in the first place. So, I am asking unit leadership to contact the EXPIRED folks on your membership rosters to get the "why" this non-renewal happens.

Help, please!

YOU are an ambassador for BCHC!

RENDEZVOUS 2024

By Michael W. King, Rendezvous Co-chair

Greetings, everyone!

Each year one primary item of feedback every Rendezvous Committee hears is that there is nothing new at Rendezvous - "It's the same thing every year."

Well, this next Rendezvous IS going to change that in a few ways. First, the venue, located in Ceres, California (between Modesto and Turlock), is different, right out of the gate. It's a comfortable horse facility with plenty of accommodations for our needs, with a very reasonable rental fee. That will help to make the event profitable. Profits are important as the funds earned pay the expenses required for BCHC to operate.

Not to worry about accommodations either. There are plenty of services in nearby Turlock and Modesto to cover everyone's needs.

The laid-back nature of the facility will be a return to a more relaxed Rendezvous where people come to congregate with friends, learn some new things, hear about the very important "Intern Program" our organization has been funding, compete in some packing contests and share meals and ideas. Exciting times ahead!

Another change is the Rendezvous will be held on two full days, Friday and Saturday. That will leave Sunday for all to attend cowboy church, travel home and get home early enough to get a good night's rest for work on Monday.

There will be plenty that remains the same: Friday and Saturday night dinners, wine and cheese tasting, classes, vendors, awards, auctions, trail trials, etc. A return to the after dinner firepit meet-and-visit gathering is also planned on a nice lawn area.

Now, this is where you all come in. The whole idea at this Rendezvous is to give our membership what they want and are looking for. So, here is the question, and we absolutely want feedback!

What instructional classes/topics would you like to see presented? Do you have other ideas of interest that have not been covered in the past that we might now do? Right now, it's an open venue so make your ideas known. A special email account set up on which you can send in your ideas and comments. That email is 2024rendezvous@gmail.com.

Rendezvous 2024 will be held in the center of the state, and we hope to see everyone from each end of the state will come and join in. We operate best as a cohesive group and a gathering to meet one another is a great way to keep that cohesion. I hope you will plan to attend, March 22 and 23, 2024!

EDUCATION - LEAVE NO TRACE



2. Switch from plastic straws to reusable straws
3. Instead of paper plates and plastic utensils, use a cool set of camp dishes
4. Ditch plastic tablecloths, paper towels, and paper napkins for reusable and washable versions
5. Reuse containers for trash bins – Ice bags and snack containers make great trash cans when emptied
6. Repackage food into reusable containers before you head out
7. Avoid buying and bringing food with unnecessary packaging
8. Use a smaller trash receptacle – By using a smaller trash bag, or better yet a reusable Deuter Dirtbag, we can be more aware of the amount of trash we create
9. Rather than discardable single use propane tanks, use a larger refillable tank for stove fuel
10. Keep a separate bag for recyclables and pack it out if not available where camping

10 WAYS TO CREATE LESS TRASH AT CAMP

By Erin & Brice – Leave No Trace Blog, June 15, 2018

Cape Hatteras, NC – Ever seen a ton of trash piled next to trash cans at your campsite? What about litter scattered around the campground? Maybe you pack things out, but are you doing these 10 things to create less trash in the first place?

Why Does it Matter?

We all produce a lot of trash while camping. From cooking, to cleaning, to hydrating, much of what we do creates waste and adds to our footprint. Camp trash can cause a lot of impacts too. If we do not Dispose of Waste Properly (LNT Principle #3) it can attract wildlife and lead to unintentionally feeding them. Our food and trash can harm their digestive systems, diminish their immune systems, and change their habits.

Even when it is disposed of properly though, camp trash can take its toll on parks and protected areas. Often times, these areas are not equipped to handle the large amount of trash created by so many visitors. Camp trash can put pressure on staff and resources in our favorite outdoor areas. Taking trash bags home with you can help alleviate this problem, but so can creating less trash to begin with.

Luckily, there are 10 simple ways we can reduce the amount of camp trash we create. By Planning Ahead and Preparing (LNT Principle #1), we can make adjustments to what we bring on our camping trips and into the outdoors to ensure less waste is created and that the waste we do create is easier to manage or pack out.

10 Ways to Leave Less Trash at Camp

1. Swap a case of plastic water bottles or a plastic jug of water for a refillable water container and reusable bottle



Take the Challenge

Summer is just getting started, and with many of us in the midst of planning our next big outdoor adventure, now is as good a time as any to take the Camp Trash Challenge. The next time you go camping, or on any outdoor adventure, take your trash into consideration. Test out these 10 tips to see how much you can reduce your waste compared to a previous outing.

Want to take it even further? Track the trash you create on your next campout. Before tossing anything in the garbage, write down what it is. At the end of the trip, take a look at your list and try to find ways you can minimize it. Feel free to repeat the exercise to whittle down your camp waste.



EDUCATION - YOUTH PROGRAM



YOUTH ACHIEVEMENT PROGRAM

By Tammy Bozarth, VP of Youth Education

The development of the Youth Achievement Program is coming along slowly but surely. This program will encourage family participation within BCHC and help youth develop self esteem, social and leadership skills necessary to become future leaders of the organization. Leather medallions will

be awarded for each activity/project completed. These activities range from simple crafts to high level competitions at Rendezvous.

Each unit will have a Youth Program Leader to provide support, guidance, and instructional materials to Youth Activity Leaders within the unit, and to help them plan monthly activities/projects.

The role of a Youth Activity Leader is mentorship and being a positive role model. Youth Activity Leaders organize the actual activity/project by coordinating time, date, and place, providing instructions and materials, and assisting youth in the completion of the activity/project.

In the absence of an Activity Leader, a parent may do all activities/projects on an individual basis with his child and submit the Project Completion Form to the unit's Youth Program Leader.

Through participation in activities/projects, youth are encouraged to become all they can be. Activities/projects include but are not limited to crafting, creative arts, cooking, packing, public service and trail work projects, etc., depending upon age and interest of the unit's youth members.

Achievement Awards

With the completion of every activity/project, the Project Completion Form must be submitted to the unit's Youth Program Leader. The form will include the unit's name, participant's name, age, and description of project or activity.

Each month, the unit's Youth Program Leader will compile and submit applicable forms to the BCHC VP of Youth Education by mail or email to receive achievement medallions for that unit's participants.

Achievement Medallion

The Achievement Medallion is a two-inch leather medallion with leather cordage. Each category has graphics representing the project and includes the recipient's name, unit, and year.

Annual Award

At the end of each year, the unit's Youth Program Leader will submit one name and a detailed explanation for the submission, for each of the four age groups. Names will be placed in the running for the State Top Achiever Award to be presented at Rendezvous.

Age Groups

Age groups are: 6 to 9, 10 to 12, 13 to 15, and 16 to 18 years of age. Age is determined for the calendar year of the youth's birthday regardless of the month in which it falls.

This is a simplified description of the Youth Achievement Program concept. The full version should be available for review by the October State Board Meeting and, hopefully, approved, up and running for 2024. If you have any comments or questions, please contact BCHC VP of Youth Education Tammy Bozarth.



IT'S EASY TO APPLY FOR A YOUTH CARD

Ten BCHC units (36 members) have their Youth Cards and are actively working with youth with youth on a regular basis. You can, too.

To apply for a Youth Card, simply go to the BCHC website, Programs then Youth Programs section and fill out the personal information section of the BCIA 8016 Request for Live Scan form. Live Scan is inkless electronic fingerprinting. Your fingerprints will be electronically transmitted to the Department of Justice (DOJ) for completion of a criminal record check. Digital fingerprints and personal descriptor information are electronically transferred in a matter of seconds, so it no longer takes weeks to send hard copy fingerprints and get a background check in the mail. Live Scan fingerprinting also eliminates many of the problems associated with ink prints, such as smudging, smearing, and over or under inking.

Take your completed form to any Live Scan location in your area. Just Google "Live Scan near me" to find one of more than 500 sites in California. Once your fingerprint process has been done, email your completed Live Scan application form to bhc_cor@yahoo.com. Once processed by the Department of Justice, the BCHC Custodian of Records (COR) will evaluate your record and notify you by email the information needed to move forward with your Mandated Reporting Certification, also done online. See BCHC's Youth Background Check policy for details on who needs to obtain a Youth Card and the restrictions that apply to the program.

BCHC YOUTH

KIDS CORRAL, RENDEZVOUS 2023



Reaching out to the public with family fun activities is a great way to introduce what the BCHC Youth Program offers. The Kids Corral offers a variety of activities for kids of all ages, such as leather crafts, rock painting, dummy calf roping, knots and hitches, and fun competitive games such as stick horse racing, corn hole, Connect Four, and several Leave No Trace games.



PROGRAMS

BCHC UNITS



Mother Lode Unit promotes youth with an education booth at local horse events including UC Davis Horse Day and Horse Expo. The Kids Corner displays a Gentle Use Camp and iron mules are used for hands-on demonstrations. Two Mother Lode Unit members hold Youth Cards.



Members of the Kern Sierra Unit attend multiple local public events each year. The Wilderness Riders teach Leave No Trace principles and give hands-on hitch tying instruction. Two Kern Sierra members hold Youth Cards.



High Sierra Unit Wilderness Riders teach Leave No Trace at public events and conduct public outreach to local FFA students.

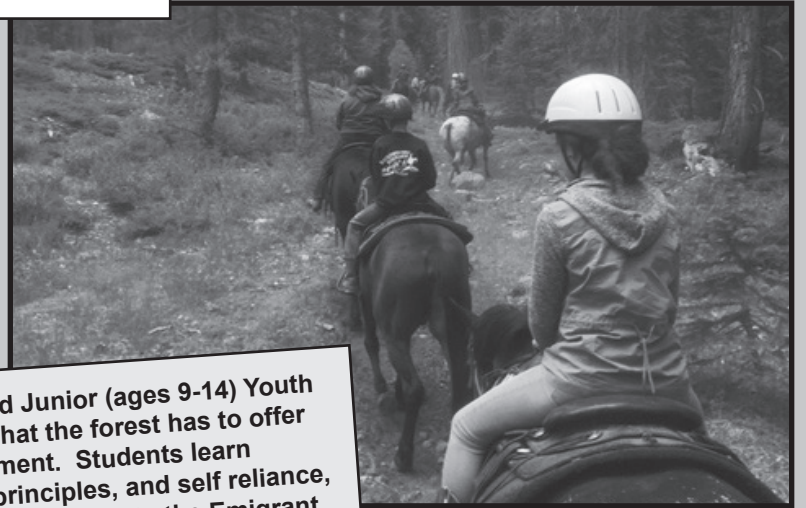


BCHC YOUTH PROGRAMS

BCHC UNITS



Mid Valley Unit alternates Senior (ages 15-17) and Junior (ages 9-14) Youth Camps each summer, giving kids a glimpse of what the forest has to offer for recreation as well as possible future employment. Students learn packing basics, survival skills, Leave No Trace principles, and self reliance, plus enjoy a horse ride from Aspen Meadow Pack Station into the Emigrant Wilderness. Four Mid Valley members hold Youth Cards.



Redshank Riders have formed a committee to promote youth activities within their unit. They have done multiple public outreach events with their education booth over the years. Nine Redshank members hold Youth Cards.

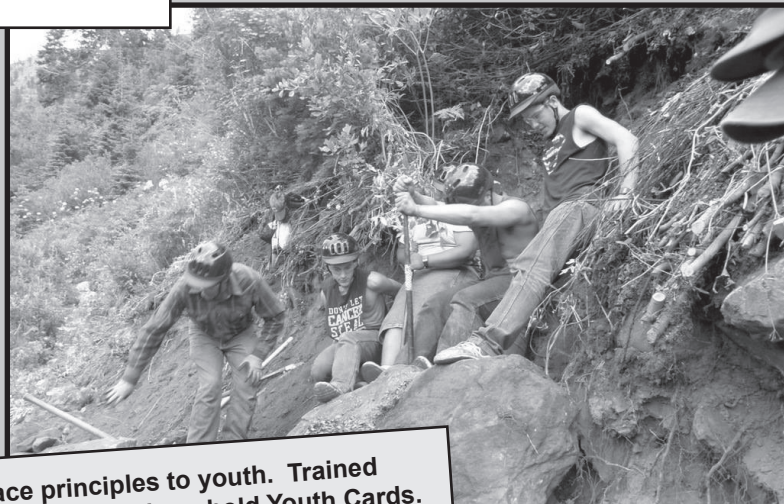


Eastern Sierra Unit conducted packing skills classes on Sunday afternoons throughout the year regardless of the weather.



BCHC YOUTH PROGRAMS

BCHC UNITS



Shasta Trinity members teach Leave No Trace principles to youth. Trained youth help pry and move large boulders. Nine ST members hold Youth Cards.



High Country Unit participated in National Trails Day on the Modoc National Forest, teaching basic skills and introducing saws. One High Country Unit member holds a Youth Card.



Redwood Unit Wilderness Rider David Prichard assists with youth roping in the Rendezvous Kids Corral. Redwood has one Youth Card holder.

BCHC NEWS

MULE DAYS 2023

By Susie Patton, BCHC Secretary

Another Mule Days is in the books. The 2023 event was blessed with beautiful weather in Bishop, California. The new BCHC awning arrived just in time for Mule Days and really put us in a position to be seen (see photos). As usual, we arrived on Wednesday to set up the booth and the iron mules. Dr. Bill Carter (Eastern Sierra Unit) brought the heavy duty table, logs, and saws for the saw demonstrations. We had lots of help and were open for business by mid-day.

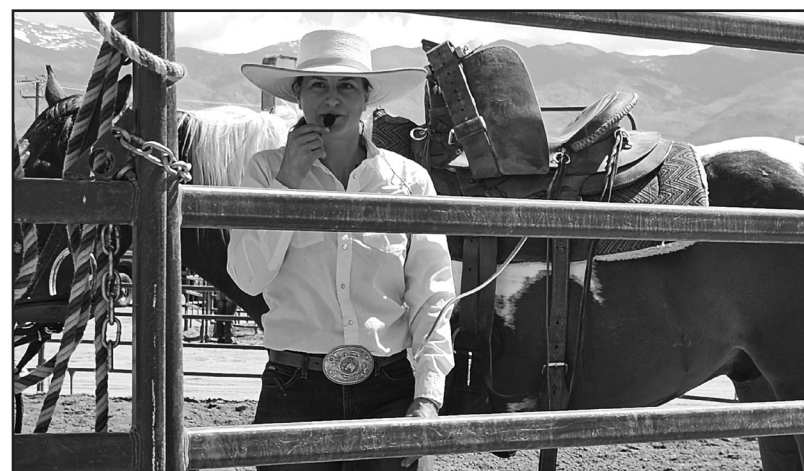
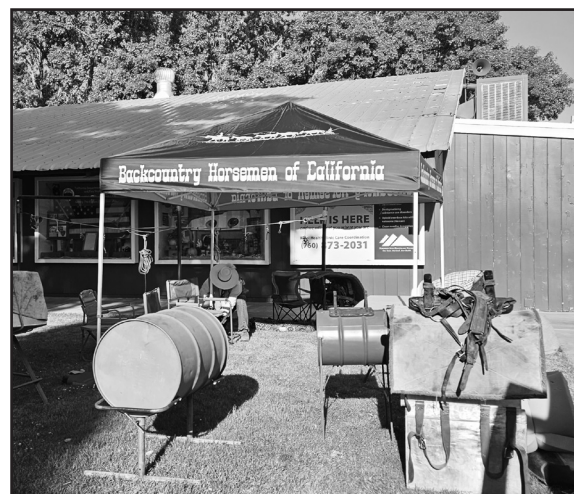
The great thing about Mule Days is getting to meet people you may have been in contact with but never met in person. You also get to meet people who have heard of our organization but are not sure what we do, as well as BCHC members from across the state. We talked to many people about trail issues, how to care for mules and horses (thanks Dr. Jamie Wilson from Sequoia Unit), even had a discussion on the best fencing for our critters. As Dan Baumgartner (High Sierra Unit) said, "We solved lots of problems under that awning." Networking with others who share our interests is what it was all about!

Troy Patton, Chip Herzig (Eastern Sierra Unit) and Mike King (Mid Valley Unit) helped kids and adults learn about cross-cut saws and let them cut on the logs. So many kids walked around carrying their log "cookies." Speaking of kids, several youth and college kids used our iron mules to practice for their competitions later in the week. It was great to hear them sharing tips and assisting each other. Our BCHC corner was one busy place.

A highlight of Mule Days was BCHC presenting a donation to Mr. Reid Hopkins of One Spade Youth Packers. This program is centered in Kernville, California, and was started in 1995. The program takes in kids from 9 to 17 and teaches them about leadership, packing, caring for animals, caring for the land and life responsibilities. Mr. Hopkins has some great success stories and he shared some of them with us. He placed the BCHC banner on his wagon in the parade as a thank you for our donation.

Many BCHC members had a part in Mule Days: Dan Baumgartner (High Sierra Unit) was the auctioneer for the American Mule Museum Fund Raiser auction. Mariah Keuler (Eastern Sierra Unit) gave a great demonstration on how to prepare for trips into the backcountry as well as competing in many events. Troy and Susie Patton (Eastern Sierra Unit) worked with the Driving Chairperson, Sarah Sheehan (Eastern Sierra Unit), to set up and monitor all the Driving Classes, working closely with the Driving Judge. Sarah was also awarded "Committee Person of the Year" and honored with a beautiful belt buckle and a wagon ride in the parade. Dr. Jamie Wilson, DVM, (Sequoia Unit) served as on-call vet for the event. Mid Valley Unit members Carl Perry, Lloyd Erlandson, Dave Rumsey, Doug Dollarhide and Mike King were all there supporting their college pack team. Mother Lode Unit members Randy Hackbarth and Lucy Badenhoop were also there with a college pack team and were a great help at the state booth, as were members from Kern River Valley Unit with their college team. Also, Dr. Carter and Anna Baglione (Eastern Sierra Unit) were involved in the mule and donkey races as well as with the packing competition. BCHC was very much a presence at the 2023 Bishop Mule Days Celebration.

A big thank you to all who helped in the booth, with the iron mules and with the cross-cut saws. You helped get BCHC's message out to the many attendees of Bishop Mule Days 2023.



UNIT NEWS

SIERRA FREEPACKERS KEEP CLEARING TRAILS TO YOSEMITE

By Mary Odell

The work never seems to end for the Sierra Freepackers. The trail to be cleared was the Grizzly Trail that starts at the north end of the Snow Play Area in Fish Camp, located just outside the south entrance to Yosemite National Park. It is a two-mile long trail that has been heavily impacted by recent drought years and bark beetles. Every year it is like starting all over again.

On May 25, a six-person-all lady team got started removing eight trees and clearing a lot of debris. Sawyers of the day were Denise Robinson and Marliss Rohrer. I used my new pack mule, Daisy, to carry all the tools. It was my first packing trip using Daisy and she was awesome. She is just the right size for us to get tools in and out of the panniers easily. Almost 60 hours were spent on this day's work. Swampers were Karoline Waggle, Angie Ausman, and Jane Smith. I swamped, took pictures, and packed Daisy.

On June 15, we headed back. On this day our sawyer was Dave Howse with his 36-inch saw. We were able to remove the big trees we passed by on our first trip due to only having smaller saws. The biggest tree of the day was 32 inches in diameter. Lots of swamping was done by Patricia Vallentyne, Teri Cook, Karoline Waggle, Thelma Howse, Denise Robinson, and me. I again packed my new mule for her second trip. There was a bit of excitement once with her, but she is a great little mule. We cleared 15 trees and made about 1.6 miles up the trail. Sixty-eight (68) more hours were put in that day. We are now more than halfway through this one trail.

We made it back a week later to complete the Grizzly Trail on June 22. Two crews set out on opposite ends of the trail and met in the middle right about lunch time. The two miles of trail were completed! Gary Bates and John Wagoner were our sawyers, clearing 24 more trees. Another 61.5 hours were contributed this day. The first team crew was made up of John Wagoner, Patricia Vallentyne and Teri Cook, and the second team was comprised of Gary Bates, Ann Bates, Marliss Rohrer, and Mary Odell.

Total hours on this project was more than 190 hours including reconnaissance and all the trail days. There are more trails to be cleared in this area and up near Kelty Meadows plus more at Bass Lake...so much work, so little time!



UNIT NEWS

SHASTA/TRINITY UNIT PREACHER MEADOWS CORRAL PROJECT

By Laura Rodger, Shasta Trinity Unit President

This project was in the planning stages for a few years. A couple of years ago, the Forest Service for the Shasta Trinity District donated some heavy-duty corral panels so we could install them in the Preacher Meadows campground. We stored the panels nearby at Alan Hill's Ranch, which happened to be right across the road from the campground. Unfortunately, Alan passed away before the panels could be erected, but the Hill family was very helpful and allowed us access to the Hill Ranch to retrieve the panels.

It was reported that the panels were extremely heavy and that it would take eight people to lift each one. So, we contacted one of our members, George Lawrence, who had a tractor and he helped lift the panels onto a flatbed trailer, which we borrowed from Kim Gardner, another one of our members. George and Sam Burrows got the panels loaded and then unloaded them at the campground.

As it turned out, we needed a couple more panels and five gates to make the corrals complete, so Larry Shuman purchased the panels/gates and transported them to Preacher Meadows. It was around 1 o'clock when I showed up and Sam and I worked until sundown to get all the panels standing up and bolted together. We sank in T-posts to secure the panels, which would require someone to do a whole lot of work if they wanted to steal them.

The next day we finalized a few things and had our welding supplies, welder and water on hand to start welding the panels. Sam Burrows had borrowed a generator and welding machine from someone he had worked with in the past. The greatest part was when one of our youth members, Blake Drake, who is an expert welder, worked non-stop until all the welding was complete. We were finished by noon. These panels are next to impossible for a drive-by thief to remove!

This project is a prime example of teamwork and how enthusiasm brought all these people together to get the panels seated.



UNIT NEWS

SHASTA TRINITY HOLDS LUMBER AND GRAVEL PACKING CLINIC

By Laura Rodger, Shasta Trinity Unit President

Sam Burrows of the Shasta Trinity Unit held a packing clinic on how to haul gravel and lumber into the backcountry. First, we tried a horse who is a very gentle, older kids' horse. When we tied up the board on his side, he went a little crazy. He bucked around but we got him calmed down fairly quickly. The other two animals we packed were pretty experienced mules and they had no problem hauling a big piece of board around. Using a round pen is key to training for this type of load.

We then practiced using gravel bags. We placed 90 pounds of gravel on each side, then emptied it back onto the ground in the round pen. The older horse was a little skittish when the gravel was pouring out, but we thought that he would be real comfortable if we continued training for a few more hours. The two mules did really well - they looked at it sideways but they tolerated the gravel pouring out with no issues.



PASSIONATE NORTH STATE MEMBERS GET A LOT DONE IN A SHORT TIME

By Michele Machado, Top of the State Unit

It started as a road trip up to see how much snow was still at Carter Meadows in early June. When Michele Machado and Alan Woods saw the snow load and downfall damage that was done to the stock corrals at Hidden Horse Campground, we emailed our Klamath National Forest partners Ellen Andrews and Sarah Borman to see if we could get a work party scheduled to repair the corrals and clear the trails around the campgrounds.

Ellen and Sarah gave the green light and Elliot Scott procured all the supplies and tools we needed to rebuild at least a dozen broken corral rails and one gate post.

On June 23-26, about 12 Top of the State Unit members, five Shasta Trinity Unit members and one Redwood Unit member camped at the Carter Meadows Group Equestrian Campground or drove up for the day to repair all the Hidden Horse corrals and clean up the campground. We also cleared about 20 downfall trees from the trails that connect the campgrounds to the Trail Gulch and Long Gulch trailheads.

On Sunday, we headed up on the PCT and cleared approximately 40 downfall logs in a five-mile stretch on the northbound route starting at Carter Meadows summit.

Lastly, two of our members, Alan Woods and Robert Robustellini, earned their crosscut saw certifications from Ellen Andrews on June 23.

This work party weekend was a great example of how North State BCHC unit members with a passion for our equine campgrounds and trails can work together with our Forest Service partners to get a lot of work done in a short time.

UNIT NEWS



Rich Lancaster supervising some of the kiddos loading an iron mule



ESU members and others attending Dr. Millici's vet clinic



Tyler Knowles and Bryan Kaiser doing some hands on learning during their hoof care seminar



EASTERN SIERRA UNIT IS BUSY

By Anna Baglioni

We are rolling into the midway point for 2023 already! BCHCES had a busy end of spring and start of summer! We rounded out our yearly packing lessons right before the start of Mule Days. We also added a few educational seminars to our docket this year.

We had a very successful emergency backcountry vet care clinic with local veterinarian Dr. Nicole Millici, an informative and hands-on hoof care clinic with Tyler Knowles and Bryan Kaiser from McGee Creek Pack Station and ended with a short clinic on Backcountry Horsemanship from unit VP of Education, Mariah Keuler.

Our lesson program went well this year. We used a progressive approach with folks. Every week we would cover or progress to a new topic while also giving people the chance to throw hitches and make loads. We had quite a bit of youth participation so we will be looking to switch things up for next year's program to keep interest up. We will be gathering input and ideas from unit members on this front. There have been suggestions such as 4-H projects, different seminars, and member campouts.

Our unit had a good showing at Bishop Mule Days. We had many members running around supporting various parts of the show from the "I Want to be a Packer" booth, to the Intercollegiate Packing, to the Range of Light Mules to the BCHC booth and saw demonstrations. VP of Education Mariah Keuler earned several Reserve Championships through the course of the week, including her participation in the Reserve World Champion Pack Team from Red's Meadow! Youth Member Sage Lancaster competed for the World Championship Individual Youth Packer and had a good showing against the boys. She and her sister, Sierra, placed well in the box hitch and the diamond hitch competitions. Mariah and unit President Anna Baglione rode Anna's mom's donkey (Dawn Kee) in various donkey classes and were both adored and laughed at. Unit member Sera Skellenger was a crowd favorite as a member of the World Championship Pack Team from Rock Creek Pack Station Women's team. Anna was an alternate and coach for the team this year. The last time a women's only team won the all-around like they did was in 1988. (For those who remember, the 1988 team was the High Sierra Stock Users!) You go, girls!!

It has been a very slow start to the season in the high country. Many of the local pack stations have been dedicating their staff to clearing trails and snowfields. Unit members Kelly Kate Warren and Tate Wacker, who pack for Rock Creek Pack Station, have been clearing trails out of Rock Creek as well as Horseshoe Meadows. Employees there have reported that while snow is melting quickly, the shovels are hard at work, the creeks are high, and the mosquitoes are hungry. We wish them luck in their coming season. With the meadows wet and boggy, there will not be much grazing opportunity for stock. This summer a few unit members will be helping at Rainbow Pack Outfitters with their youth camps. This is a partnership that many members are looking forward to seeing progress. Unit member Rich Lancaster will be guiding trips up there this summer season.

UNIT NEWS

MID VALLEY UNIT SPONSORED MULE PACKING EDUCATION EVENT

By Carl Perry

On July 1, 2023, the Mid Valley Unit of Backcountry Horsemen of California held a mule packing clinic at the arena of the Equine Therapeutic Group, Horses of Warriors. H.O.W. provides veterans and first responders the opportunity to learn how to ride and care for horses. Services are free of charge to all persons involved. Mid Valley Unit members also taught H.O.W. people and any public person how to safely pack mules in the back country. The clinic was open to anyone who made a reservation.

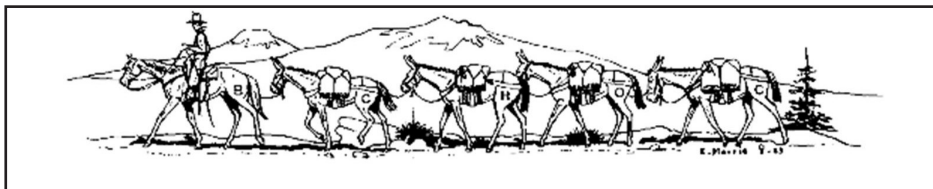
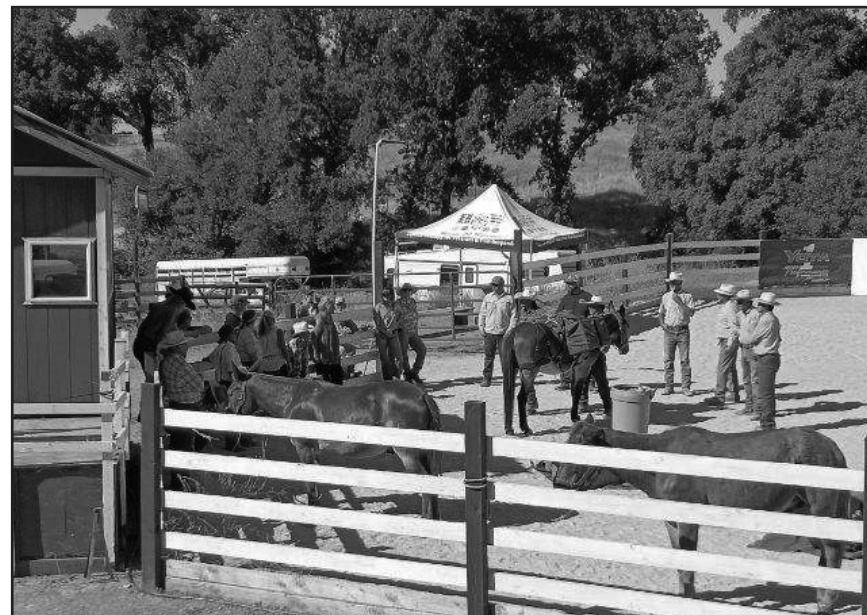
We had nine mules with nine trainers, 18 participants, 11 cooks, two catch-all helpers and a few extra H.O.W. members who were spectators. We fed complimentary meals to a total of 45 people. The meal was excellent and plentiful including three Dutch oven desserts that were scrumptious.

The clinic started off with Garrett Dollarhide giving a demonstration of how to saddle a mule with the blankets in the proper place on the back of the mule. Then he placed a pack saddle in the middle of the back of the mule. He quizzed the participants on the parts of the pack saddle. Most of the participants did not know the parts of a pack saddle. He demonstrated how to attach all the paraphernalia in the proper places. Then he explained how to load the boxes and build the box hitch. Students soon found out that the art of packing is not an easy task to learn.

After the demonstration, everyone had to saddle their provided mule and create the box hitch. When the participants started their exercise, I could see the puzzled looks on their faces. We wanted to bring the motto back, "Learn by Doing." With the help of our nine trainers, all students completed the task of saddling. Now the difficult box hitch was about to begin. Most all of the trainers had to recreate a box hitch again to show the students how to create the dreaded hitch. The training went on for about two hours and the temperature was warming up near the 100-degree mark.

We shut the training down at 11 o'clock. We had a short meeting about Leave No Trace, who we are and what we do, supplies to take on a pack trip, the preconditioning of yourself and your animals, how to organize and plan a pack trip and we warned the students about basic wilderness regulations. The clinic was a huge success with everyone being box hitch ready for the mountains.

Twenty-three Backcountry Horsemen members took time out of their daily lives to make this event happen. A special "thank you" to all of you.



Recognition of Special Individuals

Benefactor funds are used in a variety of ways to support BCHC's Public Lands activities. Uses of Benefactor funds may include but are not limited to hiring consultants to perform in-depth reviews, financing special studies and reports, and reducing out-of-pocket travel expenses for those who testify at state and federal hearings.

SPECIAL MEMBERSHIPS

4/15/2023 through 7/15/2023

BENEFACTOR (\$100)

Eastern Sierra	Bill Carter Troy Patton
High Sierra	Ruth Gerson Nancy Hamill Jacob Hamstra Trish Pendegraft
Kern Sierra	Mylon Filkins, DVM Larry Mumford
Lake-Mendo Los Padres	Tim Holliday Kaye Bruns Robin Cederlof William Chaides Eve Devine Laurie Henry Jessica Schley Laura D. Wimer
Mid Valley	Tony Alamo Karen Barindelli Jay Barnes Gary A. Cain Bob Cooper Carol Jo Hargreaves Rian Hudson Bob Magee Jennifer Marshall John V. Marshall MID VALLEY UNIT Randy Powell John Schaapman
Mother Lode	Tom Cooper Donna Jones Furlow Jaede Miloslavich Stephanie Williams
North Bay Redshank Riders	Lynn Cominsky Renee Aberle Ron Robertson
Redwood	Carole & Darrel Polasek

BENEFACTOR (\$100)

San Diego	Barbara Hughes Walt J. Kirkwood Betsy Mellor Lynda & Michael Sterns
San Joaquin Sierra	John Cunningham Stephen Naylor Cathie Walker
Sequoia	Kathryn C. Bennett Donald M. McMillan Frank Schlitz Jamie Wilson, DVM
Shasta Trinity	Lyle Charter Ken Hartman Lori Henderson George Poppic, Jr. Laura Rodger

PATRON (\$250)

High Country High Sierra	Lynn Saunders Richard Cochran Karl Pendegraft Sonia Shepard McLellan
Kern Sierra	Willi Coeler Lynn Joiner
Los Padres Mid Valley Sequoia Shasta Trinity	Otis Calef Dennis M. Serpa Jan Walker Bruce McGowan

MT. WHITNEY (\$500)

Eastern Sierra Kern Sierra Mid Valley	Sarah C. Sheehan Roger Whitaker Terri Arington Lloyd Erlandson Catherine Godwin Craig Bugajski Allison Renck Dean Angelides Kay Walters
Mother Lode Pacific Crest Redshank Riders Shasta Trinity Sutter Buttes	

Send your membership renewals to VP of Membership Chip Herzig. DO NOT SEND THEM TO BCHA. Sending to the wrong place will delay payment and cause your membership to show as expired so you cannot participate in unit events.

WELCOME, NEW MEMBERS!

**We look forward
to meeting you!**

**The following new members joined BCHC from
4/15/2023 through 7/15/2023**

Eastern Sierra	Pamela Bartley Jeremy Schulz & Keegan Walsh
High Sierra	Jean Butler John, Jeanette, Eidann, Reagan & Declan Kitterman Jackie Yeiser
Kern River Valley	Stacy Yates
Los Padres	Madaline Machamer Claire Saydah
Mid Valley	Lauryn Machado Deb McConnico
Mother Lode	E. Janell Cornforth & Paul Bickner Abbas Mehdi
Redshank Riders	Makiya Pittman Gunilla Pratt Russ & Lisa Robertson & Elle Christian
Redwood	Teddi Baer Mary Bigger Robert DeGenova Erin & Emily Henson Brent Powell Robin & Ryan Rice Alana Schoonover Terri Warnick Kristin Windbigler
San Diego	Michael Clyde Cafferty Jim & Helen Metger
San Joaquin Sierra	Karen & Tim Dixon Mara & Duskin Franz Nancy Henson & Richard Lee Brian & Kimberly Jones
Sequoia	Austin Ladrigan & Brogan Wheelless
Shasta Trinity	Kristi Hale Jacob Hill Dan & Annette Jones Clint & Brone Lear Slade & Heidi Taylor
Top of the State	Brad & Emma Ish & Carrie Owan Tammi & Clay Van Housen

WHY JOIN BACKCOUNTRY HORSEMEN OF CALIFORNIA?

(From bchcalifornia.org)

As a member, you'll:

- Get to participate in state and unit activities
- Learn valuable backcountry skills and outdoor ethics
- Gain new friends in our wonderful members
- Receive the BCHC newsletter
- Be kept up to date on public lands issues

...and more!

Even if you don't ride or aren't an active member, your dues contribute to our cause! You'll be helping pay for work projects, educational materials, training and insurances. Help support our efforts to keep trails open to equestrians!

TO JOIN OR RENEW BY MAIL

1. Fill out the MEMBERSHIP FORM on page 23, make a copy for your records. **IMPORTANT:** Youth Memberships **MUST** also print, sign, and mail these forms. Youth memberships will **NOT** be valid until the forms are received.

2. Mail the completed form(s) and check* to:

Chip Herzig
BCHC Membership
1280 State Rte 208
Yerington, NV 89447

*Please make checks payable to Backcountry Horsemen of California.
(You may also pay via Paypal.)

TO JOIN OR RENEW ONLINE

1. Fill out the ONLINE MEMBERSHIP FORM, save it and print a copy for your records.

2. Submit the online form. A copy will be sent to Chip Herzig. VP of Membersio. **IMPORTANT:** Youth Memberships **MUST** also print, sign, and mail these forms. Youth memberships will **NOT** be valid until the forms are received.

3. Pay with your Paypal

BCHC Units Around the State

ANTELOPE VALLEY

PO Box 84
Pearblossom, CA 93553
www.bchc-avunit.org
Marcy Watton
(661) 878-1791
Mwatton@att.net

EASTERN SIERRA

17 UniB Sunny Slope Rd
Crawley Lake, CA 93549
Anna Baglione
(209) 918-1210
albaglione@ucdavis.edu

HIGH COUNTRY

PO Box 161
Milford, CA 96121
Cindy McMurry
(530) 640-0429
mcmurrycindy@gmail.com

HIGH SIERRA

PO Box 6632
Visalia, CA 93290
www.highsierraunit.org
Dan Baumgardner
(559) 334-7731
danbdrafthorse@yahoo.com

KERN RIVER VALLEY

PO Box 2179
Lake Isabella, CA 93240
4HRanch@earthlink.net
Larry Cigainero
(760) 379-5920
larrybchc@aol.com

KERN SIERRA

16347 Stephenie Rd
Bakersfield, CA 93314-9669
Curtis Harms
(661) 817-5452
mulerider2020@icloud.com

LAKE-MENDO

6980 Potter Valley Rd
Ukiah, CA 95482
Scott Harrison
(707) 234-9512
tpahl@sbcglobal.net

LOS PADRES

Box 472
Atascadero CA 93422
www.bchc-lpunit.org
Greg Feinberg
(805) 458-2879
Feinberg.greg@gmail.com

MID VALLEY

PO Box 1709
Modesto, CA 95353
www.bchcmidvalley.org
Doug Dollarhide
(209) 605-2403
bootsandspur@att.net

MOTHER LODE

PO Box 702
North Highlands, CA 95660
www.bchcmlo.org
Randy Hackbarth
(530) 626-0571
trlyrder@pacbell.net

NORTH BAY

PO Box 9435
Santa Rosa Ca. 95405
www.northbayunit.com
Dan Horn
(707) 953-4903
bearstrap@msn.com

PACIFIC CREST

P.O. Box 720684
Pinon Hills, CA 92372
bchcpacificcrestunit.org
Jennifer Sponsler
(760) 868-1588
jnjspon@aol.com

REDSHANK RIDERS

PO Box 383
Aguanga, CA 92536-0383
www.redshankriders.com
Mike Lewis
(951) 760-9255
president@redshankriders.com
stumblin15@gmail.com

REDWOOD

PO Box 6023
Eureka, CA 95502-6023
www.redwoodunit.com
Carole Polasek
(707) 786-9637
cell: (707) 599-8021
muleride15@gmail.com

SAN DIEGO

PO Box 833
Descanso, CA 91916.
www.bchcsd.com
Randy Meyers
(619) 507-2210
president@bchcsd.com
juliemeyers619@gmail.com

SAN JOAQUIN SIERRA

PO Box 25693
Fresno, CA 93729-5693
www.bchcsjsu.org.
Joe Kaminski
(559) 909-0505
kaminski@att.net

SANTA ANA RIVER

PO Box 306
Norco, CA 92860
www.sarubchc.org
Mike Williams
(951) 340-1789
socialhorse@att.net

SEQUOIA

PO Box 456
Springville, CA 93265-0579
www.bchc-sequoia.org
Gail Inman
(559) 539-2260
gail.inman@gmail.com

SHASTA TRINITY

206330 Gas Point Rd Ste B2 #48
Cottonwood, CA 96022
www.bchcshastatrinity.org
Laura Rodger
(530) 347-9351
fordoglaura@sbcglobal.net

SIERRA FREEPACKERS

PO Box 64
Oakhurst, CA 93644-0064
www.sierrafreepackers.com
Patricia Vallentyne
(559) 760-6589
pcvallentyne@gmail.com

Questions? Membership Matters

BCHC VP of Membership is
Chip Herzig.

He will be happy to address
your questions or concerns.

Chip may be reached
Monday through Friday.

By mail: BCHC Membership
1280 State Rt 208
Yerington, NV 89447

Email: chipherzig@gmail.com

Phone: (775) 463-3634

SUTTER BUTTES

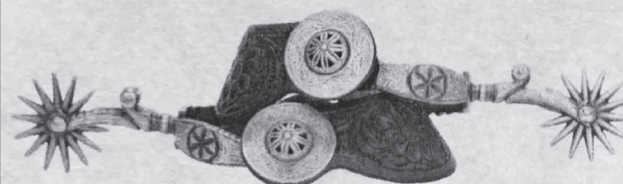
2568 Lake Hills Dr
Butte Valley, CA 95965
Gary Paul
(530) 693-0420
muleguy54@gmail.com

TOP OF THE STATE

PO Box 461
Etna, CA 96027-0461
www.bchc-tos.com
Michele Machado
(817) 308-0258
meechele418@gmail.com

Eddie & Kellie Pogue

Collectors of
Old West History



Bakersfield, California
Hm# 661-871-8808
Cell# 661-331-5231
walkingbox@aol.com



WANTED
Quality Old West
Collectibles

Guns, Bits, Spurs,
Saddles, Hats, Boots,
Chaps, Art & Quality
Western Antiques

Appraisals

MEMBERSHIP

**Backcountry Horsemen
of California**



**MAIL TO: BCHC
MEMBERSHIP
1280 State Rt. 208
Yerington, NV 89447**

**MEMBERSHIP
APPLICATION**

New Renewal
 Change

PARENT UNIT AFFILIATION: (Select and CHECK a Unit as your Affiliation)

- | | | | |
|--|--|---|---|
| <input type="checkbox"/> Antelope Valley | <input type="checkbox"/> Lake-Mendo | <input type="checkbox"/> Redshank Riders | <input type="checkbox"/> Shasta Trinity |
| <input type="checkbox"/> Eastern Sierra | <input type="checkbox"/> Los Padres | <input type="checkbox"/> Redwood | <input type="checkbox"/> Sierra Freepackers |
| <input type="checkbox"/> High Country | <input type="checkbox"/> Mid Valley | <input type="checkbox"/> San Diego | <input type="checkbox"/> Sutter Buttes |
| <input type="checkbox"/> High Sierra | <input type="checkbox"/> Motherlode | <input type="checkbox"/> San Joaquin Sierra | <input type="checkbox"/> Top of the State |
| <input type="checkbox"/> Kern River Valley | <input type="checkbox"/> North Bay | <input type="checkbox"/> Santa Ana River | |
| <input type="checkbox"/> Kern Sierra | <input type="checkbox"/> Pacific Crest | <input type="checkbox"/> Sequoia | |

DCTR (Your Membership Number): _____

MEMBER'S NAME - No Business Names, Print Clearly SPOUSE/CO-MEMBER'S NAME - MUST SHARE SAME ADDRESS

Street Address/PO Box _____

City _____ State _____ Zip Code (full 9 digits if known) _____ Area Code _____ Phone Number _____

Email Address: _____

Donation to BCHC Education Fund (Tax deductible) \$ _____

Total Enclosed: \$ _____ Check No. _____

Parent Unit Membership Types (Check One)

- | | | | |
|--|--|---|--|
| <input type="checkbox"/> 1 Year Individual \$50 | <input type="checkbox"/> 1 Year Family \$60 | <input type="checkbox"/> Young Adult (18-25 years old) \$15 | <input type="checkbox"/> Benefactor \$100 |
| <input type="checkbox"/> 2 Year Individual \$90 | <input type="checkbox"/> 2 Year Family \$110 | <input type="checkbox"/> Youth (12-17 years old) \$15* | <input type="checkbox"/> Patron \$250 |
| <input type="checkbox"/> 3 Year Individual \$125 | <input type="checkbox"/> 3 Year Family \$150 | *Youth members MUST fill out BOTH Youth Membership forms (available online) | |
| | | | <input type="checkbox"/> Mt. Whitney \$500 |

Associate Memberships: An Additional \$15 PER UNIT is added to your Parent Unit Dues
Associate Memberships Unit Affiliations MAY NOT BE FOR THE SAME UNIT AS YOUR PARENT UNIT

Associate Membership for: _____ \$15/Unit
Unit Name (from above list)

Associate Membership for: _____ \$15/Unit
Unit Name (from above list)

Add additional choices here

Please clip form along dashed line and keep the below portion for your records.

Parent BCHC Membership Types

Individual, Family, (Shared**), Benefactor, Patron, and Mt. Whitney

A Parent Membership is affiliated with a single Local Unit. BCHC Members may NOT hold more than ONE active Parent Membership.

**A SHARED Membership if for two adults with differing last names who share a common address.

Associate Memberships

These special Memberships are only available to persons already holding Parent BCHC Membership. No one may sign up for an Associate Membership without 1) having registered one of the Parent Membership types, and 2) having selected Parent Unit affiliation.

Youth Memberships

Youth Memberships MUST be accompanied by a signed Youth Membership Permission Release and Youth Parent Permission Form. A Youth Membership is NOT valid until BCHC or the Parent Unit has received signed copies of these forms.

Complete information regarding BCHC Membership is available on the MEMBERSHIP TAB at bchcalifornia.org or call (775) 463-3634

KEEP FOR YOUR RECORDS

I submitted an Application Form for a new -

- | | |
|--|-------|
| <input type="checkbox"/> 1 Year Individual | \$50 |
| <input type="checkbox"/> 2 Year Individual | \$90 |
| <input type="checkbox"/> 3 Year Individual | \$125 |
| <input type="checkbox"/> 1 Year Family | \$60 |
| <input type="checkbox"/> 2 Year Family | \$110 |
| <input type="checkbox"/> 3 Year Family | \$150 |
| <input type="checkbox"/> Young Adult (18-25 years old) | \$15 |
| <input type="checkbox"/> Youth (12-17 years old) | \$15* |
| <input type="checkbox"/> Benefactor | \$100 |
| <input type="checkbox"/> Patron | \$250 |
| <input type="checkbox"/> Mt. Whitney | \$500 |

On that form, I also requested:
 _____ Associate Memberships \$ _____
 My Total Remittance: \$ _____
 My Check Number: _____
 Date Mailed: _____

Verification of BCHC Membership

Verification of BCHC Membership is available via:
 1) BCHC Unit President's reports
 2) BCHC Membership Chair reports
 3) a self addressed stamped envelope submitted with this form
 4) a valid email address

DON'T FORGET: The BCHC Executive Committee will no longer send out membership renewal verification "green slips" via regular mail. Instead, each unit president and membership chair will get a personal email from the BCHC VP of Membership (Chip Herzig) with each units' data AND it will be put on the BCHC web page in the password protected section.

BCHC YOUTH PROGRAMS

BCHC UNITS



The Kern River Valley Unit assists One Spade Packers, a local hands-on nonprofit youth packers program for kids ages 9 through 17. (See the President's Message, page 3, for more information.) Three KRV members hold Youth Cards.



Top of the State Unit held an arena play day at Stapleton's ranch near Etna. This family-friendly event included events where families with children could participate in fun activities such as the water balloon relay and bucket relay. The kids (and adults) had a great time.



Sierra Freepackers members provide hands-on packing demonstrations. They teach K-8 students Leave No Trace principles at Coarsegold Rodeo's "Heritage Day." Unit members and youth also participate in the annual Raymond Parade. A fun way to reach out to the community and demonstrate proper waste disposal is to have a unit member follow the equestrian participants as a pooper scooper. Three Sierra Freepackers hold Youth Cards.