

INSIDE THIS ISSUE

President's Message	Pg 3
BOD Meeting Minutes Draft	Pg 14
Rendezvous 2014	Pg 16
California Mission Riders 2013	Pg 17
Membership Application	Pg 18

For more BCHC information, see our website:
bchcalifornia.org

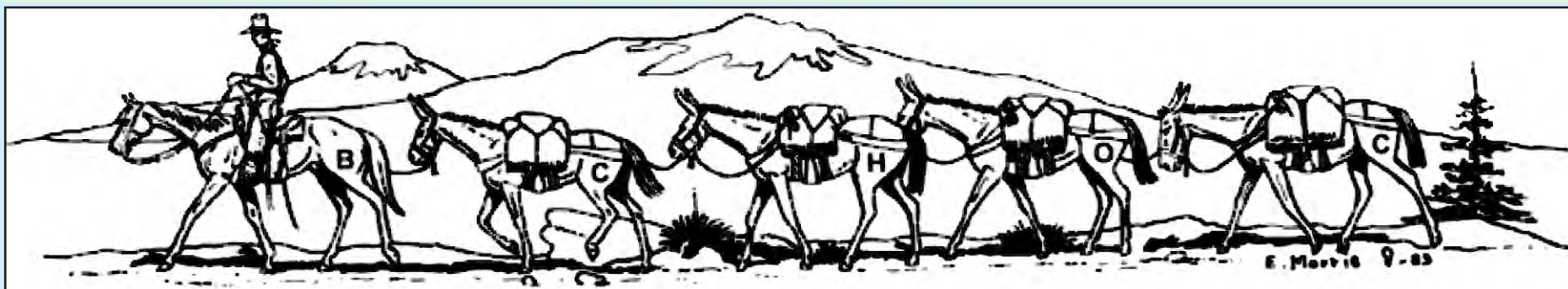
BCHC

BACKCOUNTRY HORSEMEN OF
CALIFORNIA
13061 Rosedale Hwy
Suite G, Box 217
Bakersfield, CA 93314

ADDRESS SERVICE REQUESTED

NONPROFIT
Organization
U.S. Postage
PAID
Manteca, CA
95336
No. 43

The Backcountry News



Volume 23, Issue 1

The Official Publication of Backcountry Horsemen of California

WINTER 2014

Rendezvous 2014 Update!

News flash, everyone! In case you hadn't heard, the Rendezvous is in the same place as last year; in the city of Norco, otherwise known as "Horse Town, USA" It will be in the George Ingalls Equestrian Center

If you have not visited this city you are in for a treat. Equines have the right of way and, really, there are hitching posts in front of the grocery store and trails right down the center of town. This year we will be offering free guided trail rides on Thursday and Monday so bring your favorite riding steed. In between these days, Rendezvous will be offering three full days of FUN!

Plus, the food for the event dinners will be provided by Backwoods BBQ. Friday night will be Tri-Tip & Carnitas, Saturday night will be Tri-Tip & Chicken.

Make sure you purchase your meal tickets in the Rendz registration packet.

See more info regarding the Rendz on page 16.



A nice saddle similar to the one above will be raffled off in March at our 2014 Rendezvous. There will be raffle tickets for sale to win a Gary McClintock custom saddle worth \$2500. Tickets will be 1 for \$5 or 5 for \$20. See his work at www.mcclintocksaddles.com/

The Backcountry News

An internal publication of the Backcountry Horsemen of California

Editor · Rhonda Strickland

Menifee, California

(951) 951-522-8757

Email: news@bchcalifornia.org or BCHC.News@gmail.com

Backcountry Horsemen of California Official Website:

www.bchcalifornia.org

Printed by The Manteca Bulletin and distributed by

The Oakdale Leader

Publication Information: The Backcountry News is the official journal of the Backcountry Horsemen of California, Inc., published three times per year. All rights reserved. It is an independent publication with news and information of interest to Backcountry Horsemen members, with an average circulation of approximately 4,000 per issue. Annual subscriptions are \$15.00 for non-members. Nonprofit postage paid at Manteca, CA.

Who is BCHC? The Backcountry Horsemen of California, Inc. is a 501c4 nonprofit organization incorporated in the State of California, March 13, 1990, with a 501(c)4 education foundation established in 2007. The Backcountry Horsemen of California, Inc., reserves the right to refuse any advertisements and/or articles that are inconsistent with the Backcountry Horsemen of California's objectives and purpose statement. Other material will be printed at the Editor's discretion.

Disclaimer: Articles and advertisements that appear in The Backcountry News do not necessarily reflect the position or opinion of BCHC or its officers and members. Nor does publication of said articles and advertisements constitute an endorsement of the views or of the goods or services offered therein that they may express. Accuracy of all material is the sole responsibility of the authors. BCHC is not responsible for unsolicited material of any kind.

Reader Submission: The Backcountry News welcomes reader contributions, event and calendar dates, and Unit news. These will be printed on a space-available basis. Submissions may be sent on disk in a Microsoft Word format, emailed or sent by regular mail. Longer articles are subject to edit for space at the discretion of the Editor. Photos may not be returned.

Deadlines: Advertising, announcements, pictures and other copy must be received at The Backcountry News by the deadlines listed below.

Deadline	Publication Date
April 18, 2014	May 2014 – Spring/Summer
August 15, 2014	September 2014 – Fall
December 19, 2014	January 2015 – Winter

Advertising Rates per Issue: Rates effective January 2012. All ads must be paid in advance.

Number of Issues:	1	2	3	> Cost per Issue
Full Page	\$150.00	\$142.50	\$135.00	
Half Page (h/v)	\$100.00	\$95.00	\$90.00	
Quarter Page (h/v)	\$80.00	\$76.00	\$72.00	
Bus. Card (h/v)	\$25.00	\$23.75	\$22.50	

Advertising: All ads must include all fonts and images used in artwork. Ads must be at a resolution of 300 pixels per inch at the actual size used in the artwork. Mail payment to the BCHC Treasurer. Checks returned from the bank will have a \$25.00 return check fee. No advertising will be accepted from advertisers with outstanding balances. Liability by The Backcountry News shall not exceed the space occupied by the error. Never shall The Backcountry News be liable for any general, special or consequential damages. All claims for adjustments must be made within 30 days of the first publication of said ad.

2014 Executive Committee

President

Richard Waller • (805) 489-8885 • homeranch@gmail.com

1st Vice President

Lloyd Erlandson • (209) 632-6470 • Lloyd.Erlandson0@gmail.com

2nd Vice President

Stacy Kuhns • (909) 633-1705 • stacykuhns@aol.com

Secretary

Kaye Bruns • (661) 803-5075 • kowgrl@charter.net

Treasurer

Lynn Joiner • (661) 747-6347 • lynnjoiner@sbcglobal.net

Vice President of Public Lands

Thor Bodtker • (415) 328-4545 • thunder.t@hotmail.com

Vice Presidents of Education

Dan Horn • (707) 544-4543 • bearstrap@msn.com

Denise Robinson • (559) 877-3532 • robnden@netptc.net

BCHA Executive Director/Chairman

Jim McGarvey • 706-669-1015 • ExecDirector@backcountryhorse.com

BCHA National Directors

Ann Lange • (760) 378-2113 • kvvet@onemain.com

Pete Kriger • (909) 910-4619 • pkriigerjr@yahoo.com

BCHA Alternate Director

Dan Clifford • (619) 659-3038 • bigeasycowboy@mac.com

2014 State Coordinators

Accounting

Weir and Associates • (661) 323-1514

Annual Meeting

Kaye Bruns • (661) 803-5075 • kowgrl@charter.net

Newsletter Editor

Rhonda Strickland • (951) 522-8757 • news@bchcalifornia.org

Insurance

Lloyd Erlandson • (209) 632-6470 • Lloyd.Erlandson0@gmail.com

Membership

Chip and Linda Herzig • Phone: (775) 436-3634 • membership@bchcalifornia.org

Rendezvous General Chairman

Thad Chodakauskas - (951) 233-8027 - ctchod@aol.com

BCHC Youth Coordinator

Jacque Murphy • (707) 498-6648 • brennalu@hotmai.com

Web Coordinator

Jacque Murphy • (707) 498-6648 • brennalu@hotmai.com

President's Page



My mustang Jeffers, and pack mule Abbey

Hello to all. I assumed the office of President of Backcountry Horsemen of California on January 1st. I am excited about the opportunity to serve you and our community of horsemen. Accomplishing our primary goal of protecting equestrian access to our public lands is a team effort requiring commitment from all 3,000 plus members of the organization. My vision for my tenancy as

president is to work to provide unfettered access to all public recreational lands.

The threats to our access come from multiple sources, including but not limited to: misguided agency policies, anti-stock user groups, unchecked misguided environmental groups and severe budget reductions that have seriously limited the ability of the agencies such as the US Forest Service to maintain the national treasure that is our nationwide trail system. The Forest Service alone has 158,000 miles of trails in its system, only a quarter of which meet their own standards. The Forest Service estimates that it will cost \$524 million dollars to bring all trails to standard. I believe this is a national tragedy.

We, the Backcountry Horsemen and other volunteer trail working groups are the forlorn hope of our trails. We are like the Dutch boy who put his finger in the dike. Yet, we too are overwhelmed when faced with the amount of work that needs to be done. How best do we utilize our physical and financial resources to accomplish this herculean task?

I and others have pondered this question. Recently Lloyd Erlandson, Kaye Bruns and I attended a class in strategic planning. We utilized the tools presented to us to analyze BCHC needs and concerns. Out of that we came up with several policies which if implemented will help our organization to be successful. The following can be implemented at the state and at the unit level.

1. We have a need for a better financial footing. For example, BCHC needs to compete in the legal and policy arena with the very well-funded environmental groups. At the unit level we can I believe, better serve the trails by raising money to hire professional trail groups such as the CCC. At both the state and the unit level grants, donations, bequests, sponsorship and other sources of revenue need to be pursued
2. Our communications with the agencies can be improved. While in most areas our relationships with the agencies are good, in other areas we can work on improving our relationships. Seeking solutions that are acceptable to all sides is very important; I believe that the win/win concept gains much better results than an adversarial approach.

3. Smart phones, tablets, Facebook, Instagram, Twitter etc. have profoundly changed the way the internet is accessed and used. These changes in communication need to be understood and used by us. I can assure you that those who oppose backcountry equestrian use do use the latest technology for communication. The internet can now be accessed while on mule back from the deepest wilderness, not that I think that is a great idea, but, it demonstrates what can be done. Young adults particularly use their smartphone for web access and non-verbal communication. Adapting our website for mobile apps as BCHA is doing currently makes it much more likely that younger people will access our site. The site can be our chief communication tool, but, only if it is accessed. Communication between the state and units, within units and unit to unit can be improved with the new technologies.
4. Those younger people. For our organization to thrive we need young adults and families. The proposal for reduced membership dues for those 18 to 25 will help. Other methods to gain younger members need to be explored and implemented.
5. While our core and origin is in backcountry stock packing. I reckon that the majority of our members truck camp with day rides. Each unit should identify current and possible new horse camp locations in their area and work to improve or construct facilities.

This is the time of year to go over your tack, repair and oil up as needed. It is the time of year to think about, and plan for those great pack and truck camping trips whether work or recreational coming up when the weather warms. As you are doing these things, spend some time pondering, if you will, how we working together can make Backcountry Horsemen of California a more successful organization. I look forward to meeting your unit delegates at our state board of directors meeting in February and many others at Rendezvous this year. Last year Rendezvous was a success not only with great classes and events, but great shopping along with a chance to talk with members from around the state. Please plan to attend; you will enjoy your time there.



BCHC Membership New Mailing Address & Phone No.

1280 State Rt. 208, Yerington NV 89447

Email: membership@bchcalifornia.org

By phone: (775) 463-3634

BCHA

Parkwide Commercial Stock Outfitter Concessions Contracts - Yellowstone National Park

Dear BCHA members,

You'll recall we issued an Eblast to BCHA members last April encouraging you to submit comments on Yellowstone National Park's environmental review of its commercial saddle and pack stock outfitters and guides. We knew there is no shortage of love and admiration among BCHA members for exploring the Nation's—and the World's—first National Park by horseback. And submit comments you did!

BCHA members submitted the majority (54%) of 156 public comment letters received by the Park from individual citizens. According to the Park's Environmental Assessment (EA, dated Nov. 2013), "The predominant comment themes were the significant role of stock use in visitor enjoyment and accessibility, stock use as a traditional part of the park's history, and opposition to restrictions or limits on day rides or backcountry use" (EA, p. 10). In other words, they heard you loud and clear!

BCHA members, you have proven that citizens indeed have a voice in agency decisions that affect our National Parks and public lands. Moreover, the excellent relations and respect shared among Yellowstone Park staff and BCH chapters and officers in Wyoming, Montana, Idaho and elsewhere offer strong testimony to the notion that we can work pro actively and in partnership with agencies to accomplish BCHA's mission.

The latest Eblast sent out on January 7th was regarding this announcement: *"The National*

Park Service (NPS) is seeking public comment on issuing concession contracts for commercially guided saddle and pack stock use in Yellowstone National Park (YNP). An Environmental Assessment (EA) that includes three alternatives was analyzed. These alternatives include:

Alternative A- No Action, no commercial saddle and pack stock outfitter-guide permits would be issued.

Alternative B (44) 10 - year concessions contracts to commercial saddle and pack stock outfitter-guides, with a continuation of current management actions. Alternative C would also issue (44) concessions contracts, but includes increased monitoring, the potential for a shorter contract term, and management flexibility to respond to resource impacts.

Alternative C is YNP's preferred alternative."

Respondents were encouraged to submit their comments through the PEPC website by January 10th. Once comments are analyzed, a decision to implement the plan will be made by the Regional Director of the Intermountain Region of the NPS.

More information can be found here:

<http://parkplanning.nps.gov/projectHome.cfm?projectId=46159>

Full Concessions Contract(s) can be found here:

<http://parkplanning.nps.gov/document.cfm?parkID=111&projectId=46159&documentID=56167>

www.NPS.gov - National Parks Service

BCHA

Old Spanish Trail Trek Submitted by Richard Waller -Los Padres Unit

The Old Spanish National Historic Trail commemorates the historic trading route that ran from Santa Fe, New Mexico through south west Colorado, up through Central Utah then down across the north west corner of Arizona, through southern Nevada into California and on to Los Angeles. Woolen goods woven in the towns along the Rio Grande were packed onto mules and taken to California where they were traded for horses and mules, which were herded back to New Mexico. There was a dark side to the trade also. Indians along the way were often kidnapped into slavery. The southern Paiutes in particular appear to have suffered greatly from kidnapers.

The Old Spanish Trail was actually neither Spanish nor a trail. The first person to travel the length of the main route was William Wolfskill, an American, in 1830. Antonio Armijo did pioneer a route linking Santa Fe with Los Angeles the year before, but his route lay to the south in what is now Arizona with less grass and water, and rougher terrain. Wolfskill's route had more water and grazes and quickly became the preferred route. The route used varied somewhat from year to year depending on water, grass and Indian relations. Lieutenant George Douglas Brewerton, US Army with Kit Carson traveled the route from Los Angeles to Santa Fe in 1848. Brewerton reported that there would be 200-300 muleteers, and up to a thousand horses and mules on each yearly caravan. Wolfskill's route has stood the test of time. I-15 and I-70 in particular are interstates that today follow his route.

Backcountry Horsemen of America is sponsoring the BCHA Old Spanish Trail Trek (OSTTREK)

Website: <http://wanderingthewest.com/old-spanish-trail/ost.html>

Facebook page: Backcountry Horsemen Old Spanish Trail Trek.

The ride will replicate and commemorate the Old Spanish Trail trade route. The primary objective of the trek is to educate and promote BCHA and our mission to preserve and protect equestrian access to America's public lands, and to promote and generate interest in the Old Spanish Trail.

The Old Spanish Trail is part of our American cultural heritage; helping to bring this trail to the attention of the nation will help to protect it for the generations to come.

The team hopes this trek will inspire

others to become involved in the preservation and protection of both the Old Spanish Trail and our priceless public lands.

A core group of no more than 6 riders will ride the entire route. It is important to note that all planning is tentative at this time, and is subject to change for a wide variety of reasons. The first 600 miles is to be ridden in October-November of 2014, the second 600 miles to be ridden in spring-summer of 2015 after the snow melts in the Utah passes. Since much of the route has roads, it is planned that the ride will be supported by vehicles which will move camp each day. There will be a few occasions where it is hoped the riders will be able take pack stock into isolated areas better replicating the original traders. The riders should be able to average 20 miles per day with a rest day each week. Holding to that schedule will allow the trip to be done in 60 days; a better estimate is 65-70 days taking into account the probability of delays for one reason or another.

The trek will take the riders through deserts and mountains, Indian reservations and National Forests. Members of Backcountry Horsemen, particularly of California, Nevada, Arizona, Utah, Colorado, and New Mexico are welcomed, and needed, to help with route finding, camping, guiding. Members are welcome to ride along with the team on segments. We hope that units along the way can help us find good camps, hot showers, barbecues, and barbecues etc. Visiting with BCH units along the way will enable us to see the local areas through the eyes of those who live there.

The team plans a film and a book on the ride. Publicity in media, television, print and internet along the way will be designed to highlight the work that BCH members do across the country.

Richard Waller of the Backcountry Horsemen of California, Los Padres Unit is the Trail Boss and chief planner of the OSTTREK. He welcomes your help and advice, and can be reached at homeranch@gmail.com



BCHA/BCHC

Hello BCH,

BCHA is looking for videos of BCH work related activities such as trail clearing, bridge work and trail maintenance. Any pack clinic footage or other education stuff would be good too.

According to them the easiest way to do this would be to email Robbin Schindele with what you have and he can contact you and arrange for a transfer. He prefers not to use YouTube videos unless we have to. Most times the quality really suffers with the video compression used lots of stuff there.

Thanks,

Robbin Schindele
Sallylove Ranch
4600 W South Slope Road,
Emmett, ID 83617
208.365.1789
robbinschindele@yahoo.com



Back Country Horsemen of California Elect a New President

Please join us in welcoming Richard Waller from the Los Padres Unit as the new president of BCHC for 2014. He lives in Arroyo Grande just south of San Luis Obispo. He is married to Laurie and has three adult children; Christopher, Rachel and Cammie.



They relocated when Richard and Laurie retired from teaching 6 years ago moving from an isolated ranchette in a mountain valley north of Truckee to the family fresh vegetable farm Richard where he grew up. Richard served 4 years in the U.S. Navy during the Vietnam era. On his return he entered college on the GI Bill eventually graduating from Chico State University with a degree in American History. He went to work for the U.S. Forest Service as a firefighter, moved to Truckee where he spent his winters on ski patrol or as a ski instructor and backcountry cross country ski guide. He spent his summers fighting fires.

Richard eventually went into teaching elementary school in Reno, Nevada. He then spent his summers traveling America and packing in Nevada and the Eastern Sierra.

He joined BCHC 6 years ago and found that the combination of packing, good friends and working on land issues suited him well. H

is guiding philosophy of life is a quote from Steve McQueen, *"I'd rather wake up in the middle of nowhere than in any city on Earth"*.

BCHC



Dave
Stamey
Concert

~
2014

Rendezvous

Cowboys and Indians Magazine has called him "The Charley Russell of Western Music". *Western Horseman Magazine* has declared his "Vaquero Song" to be one of the greatest Western songs of all time. In 2010, 2011 and 2013 *True West Magazine* named him Best Living Western Solo Musician.

Dave Stamey has been a cowboy, a mule packer, a dude wrangler and is now one of the most popular Western entertainers working today. The Western Music Association has voted him *Entertainer of the Year* and *Male Performer of the Year* 6 times, *Songwriter of the Year* 5 times. He has received the *Will Rogers Award* from the Academy of Western Artists. Delighting audiences in 23 states he finds that he prefers performing to being stomped by angry horses.

BACKCOUNTRY HORSEMEN

RENDEZVOUS 2014



AWARD
WINNING
CATERING

MAKE SURE
YOU
PURCHASE
YOUR MEAL
TICKETS
IN THE
REGISTRATION
PACKET

www.bchcalifornia.org/rendezvous.htm

TRAVELIN' YOUR TRAIL THRU LIFE

MARCH 21-23, 2014

George Ingalls Equestrian Center, Norco, CA

MENU WILL INCLUDE:

FRI: TRI-TIP & CARNITAS

SAT: TRI-TIP & CHICKEN

BEST
COOKIN'
EVER!

YOU
WON'T
NEED 2
HELPINS'

IT'S A
WIN, WIN
FOR FOOD!



BACKWOODS BBQ FULL SERVICE CATERING

Providing superior quality mesquite-smoked, Texas-style BBQ cooked to perfection. Catering for you anywhere in Southern California.

Official Caterer of the 2014 BCHC Rendezvous

BCHC

FALL STATE BOARD MEETING October 4-5, 2013 , VISALIA

The upcoming Fall State Board Meeting and election of officers will be held in Visalia at the Holiday Inn Conference Center, Friday and Saturday, February 14-15, 2014 .

Holiday Inn Hotel and Conference Center
9000 West Airport Drive, Visalia 93277
Special BCHC price: \$79/night + tax.

Let the hotel know you are attending the Backcountry Horsemen meetings.

Reservation phone #: 1-800-465-4329

*Education and Public Lands will be meeting together this year

Directions:

Take Hwy 99 to the Visalia exit. The hotel is literally right there on the cusp of Hwy 198 and 99.

Meeting Schedule:

Executive Committee Dinner Meeting: February 14, 2014 in the Laurel Room, 6 pm,-10 pm

Public Lands Committee Meeting: Saturday: February 15, 2014 in the Cedar Room, 9 am - Noon,

Education Committee Meeting Saturday, February 15, 2014, in the Cedar Room, 9 am - Noon

State Board of Directors Meeting: Saturday, February 15, 2014 in the Cedar Room, 1 - 5 pm

Directors will receive more details in the 45-day notice packet.



Hotel's website is: www.visaliaca.holiday-inn.com

OBJECTIVES AND PURPOSE of the BACKCOUNTRY HORSEMEN OF CALIFORNIA (from the BCHC Bylaws)

- To improve and promote the use, care and development of California backcountry trails, campsites, streams and meadows; to advocate good trail manners.
- To promote the conservation and utilization of our backcountry resources in concert with livestock transportation.
- To keep the backcountry trails and forage areas open to horsemen on all public lands.
- To keep current information before the Corporation membership and its local Units regarding new legislation or management plans related to government regulations of the backcountry.
- To support or oppose new proposals, plans and restrictions as related to the interest of horsemen and those persons interested in recreational stock use and enjoying the backcountry.
- To promote the interest of people who, due to health or physical factors, need transportation other than by foot on backcountry trails.
- To promote public awareness and interest in the historical aspect of horsemen and stock in the backcountry and to help educate backcountry users on ways to use the trail and forage in a manner that conserves the backcountry resources.
- To assist in keeping the public informed of the vital need for a clean backcountry.
- To promote a working relationship with and keep the work and interests of the Corporation before our local, state and federal officials.
- To assist in the formation and continuation of local Units to carry out these purposes

GET INVOLVED, DO YOUR PART

DON'T FORGET: The BCHC Executive Committee will no longer send out membership renewal verification "green slips" via regular mail. Instead, each unit president and membership chair will get a personal email from the BCHC Membership Chair (Chip Herzig) with each units' data AND it will be put on the web page in the password protected section.

BCHC Youth

Rendezvous 2014 on Youth Education

The local FFA and the High school Equine science classes in the southern California area have been invited to come to the Rendezvous to learn about BCHC Leave no Trace and packing demonstration. (2 groups will be attending). A field trip is also being planned for a couple of elementary school classes in the Norco/Corona School District for a demonstration from Jerry Tindell and a mobile "Science on the Go" wildlife class. There will be a Lost and found Safe for Kids movie and pack trip planning for kids and Survival 101 with kids classes. Rewards for attending classes will also be given out to the kids. Leather Works and other craft class are also being planned. A booklet of the kids' program will be available at the Kids Corral. Come see us at the Kids' Corral!

Submitted by Carol and Thaddeus Chodakauskas



Youth Education - Teaching by Example

Jon Erickson (USFS) sent this thank you note below that came from Adam Brown from the SCA - Student Conservation Association, Oakland, Ca. The thanks was directed to BCHC Mother Lode Unit for their help last summer packing in their gear to the Middle Velma Lakes. Included is a photo from their final report.

Mike Kohlbaker - BCHC Mother Lode Unit

Jon,

"Thank you so much for being such a gracious and supportive host for our SCA Youth Conservation Crew this past season. The experience left an indelible mark on the participants, and leaders alike, which is sure to inspire them to undertake future service endeavors in our public lands. I wanted to take this opportunity to send you a copy of the team's final report and request a time for us to debrief the program so we might learn from the successes and shortcomings and ensure high quality programming for all future Youth Conservation Crews in the future. We appreciate the time and energy (on top of your normal duties!) that you and your staff devoted to supporting the crew and ensure that they had such a memorable and influential experience."



Elizabeth and Megan in the foreground, watching the Back Country Horsemen of California.

BCHC

2015 BCHC Lucky Calendar Becoming a Reality

By Michael King

About three years ago the idea of a Lucky Calendar project for BCHC was floated and debated. With a few members expressing concerns, the idea was put to a successful real life test, two years in a row, with the 2013 and 2014 Mid Valley Unit Lucky Calendar projects. Last fall the idea was brought back to the BCHC table at the 2013 October State Board meeting in Visalia, where it was debated again and then voted upon. The vote was an overwhelming yes majority to proceed with the project, to be called the “2015 BCHC Lucky Calendar.”

First of all, I should explain why this calendar is “lucky.” It’s “lucky” because you can win money. Inside each colorful calendar is a lottery ticket with its own unique number. It is this lottery ticket you are actually buying. The calendar comes along with the ticket ‘for the ride.’ When a ticket is purchased, you fill out your contact information (or that of the recipient) and mail the ticket to BCHC. Upon receipt by BCHC, the ticket is deposited into the official ticket tumbler.

Drawings will commence January 1, 2015, with the prize for that day being \$1,000. Subsequently, on a set schedule (detailed on the calendar pages), there will be a drawing every Monday, Wednesday and Friday for \$50. Every Saturday has a drawing for \$100 and on the last day of each month there is a drawing for \$200. This goes on every month like clockwork until the end of the year when the \$3,000 grand prize is drawn on December 31, 2015. If you are “lucky” and your ticket is drawn on any of the scheduled days, you will be sent a check for that day’s drawing amount. Your ticket will then be returned to the tumbler for all subsequent drawings on the schedule. In a nutshell, you can win multiple times on the same ticket, and don’t think it’s impossible! The Mid Valley Unit has had several multiple winners this past year.

Now back to the timeline for the building of the calendar. Photographs were solicited from all BCHC units and the calendar template was secured from our printer. Mid Valley member, Carol Jo Hargreaves, is now busy assembling the final product. The goal is to have the calendars ready to distribute to units at the February state board meeting, early in 2015.

Following is the way the BCHC 2015 Lucky Calendar plan will work and how it relates to individual units: A maximum of 2,500 calendars will be printed. These will be divided among all BCHC units based on each unit’s proportionate share of the state’s 2013 year-end membership. Because we do not yet have that number, I will use 2012 year-end numbers for my illustration. At the end of 2012, BCHC had 2,828 members. Mid Valley, the largest unit had 400 members. Dividing 400 by 2,828 yields .14 (or 14 percent) of the state membership. Multiply .14 x 2,500 calendars and the result is 350. This means that Mid Valley Unit’s share of calendars to sell is 14 percent or 350 of the 2,500 total calendars printed.

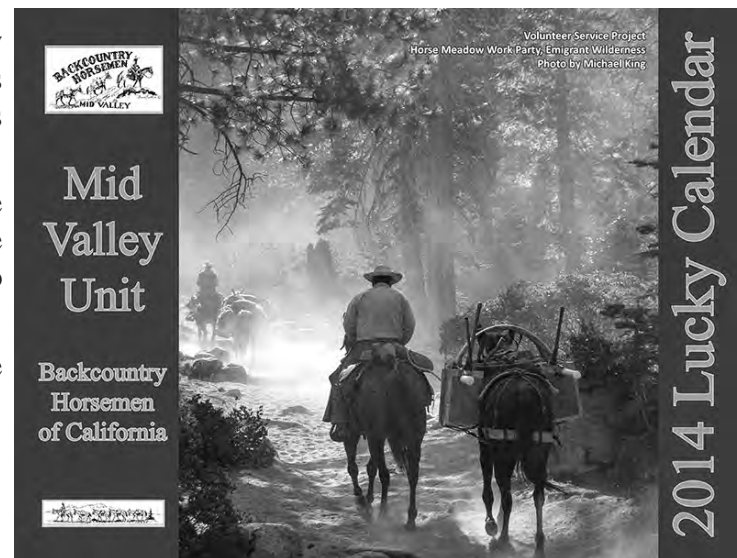
Let’s look at one more example using one of the smaller units. Kern River Valley, at the end of 2012, had 31 members. Dividing that by 2,828 gives us .011 (their share of the state membership). Multiplying 2,500 by .011 tells us Kern River Valley will get 27 calendars to sell. So you see, from the largest to the smallest, no unit is being asked to sell more than their proportional share.

Now, here is the really good news. The net proceeds (after expenses) of the ticket/calendar sales will be split 50/50 between BCHC and the units who sold them, also on a proportional basis. This calendar project is estimated to bring in just shy of \$40,000 net, assuming all calendars are sold. That means the units will receive a proportionate share of about \$20,000.

We, at Mid Valley, had great fun each week this last year watching to see who the lucky winners were and anticipating who the next one might be. Of course, not all ticket purchasers will win a cash prize, but we are ALL winners because the proceeds realized from this project go toward our efforts to keep trails open!

I will save for later an article on tips and techniques for selling tickets/calendars. We learned a lot here at Mid Valley about that which I will share with you in the next issue. The main thing to focus on now is that a decision has been made to do this project, so it is up to all BCHC members to make it successful. I know we will all do just great.

Here is a quote from the lady who heads up the BCH Idaho calendar project: “It is the easiest and best fundraising project we have ever had.”



Mid Valley Unit's 2014 Lucky Calendar.

BCHC Education

Hi All, Welcome to 2014 !!

I would like to introduce Denise Robinson, she has stepped up as Co-Chair of BCHC Education Office. Denise is a member of Sierra Freepackers and a graduate of the Wilderness Riders class of 2001. Thank You Denise



Denise Robinson

First up this year is the State meeting February 15th. Like last Fall's meeting, we plan to combine Education and Public Lands in a joint meeting splitting the morning between the two. It seemed that everyone enjoyed hearing information from both committees and it saved us a lot of time in the afternoon by not having a lengthy recap of the morning events.

In the fall of 2013 BCHC applied to "Out Door Ethics" for a 5 year contract to become a provider of the "Leave No Trace" Masters stock course. Selection of the new provider will be made by Out Door Ethics before the end of January 2014. Hopefully we will have some good news on this to share at the February State meeting.



Dan Horn

Rendezvous in Norco is racing up quickly; time to start gathering presenters for the many classes we would like to offer this year. There is always help needed in all aspects of Rendezvous, so jump in, share your knowledge and have some fun. Denise and I will be contacting all of the Wilderness Riders to present Core classes.

See you all in February at the State meeting.

Dan Horn

Education Co-Chair



Unit News

Sierra Freepackers Unit Submitted by Linda Sadler

Our growing Sierra Freepackers group of 53 members has been busy this past year with many work projects and trail riding.

Being located south of Yosemite National Park and surrounding areas of the Sierra National Forest keeps members busy with trail clearing plus reconnaissance trips for FS projects.

2013 projects included 'adoption' of Kelty Meadow with stream bank erosion and conservation using an exclosure fence. Twelve horse tie rails were installed, a solar panel now pumps water into the new watering trough in summer months. Members refurbished bear boxes then installed them near horse tie rails.

At Bass Lake we assisted Forest Service crew at Spring Cove Trail blasting out unsafe boulders for a safe trail. Our pack animals hauled in the heavy blasting equipment.

We helped in the annual erecting and dismantling of the horse corrals at Granite Creek campground.

An all female pack trip to 77 Corral surveyed fence damage around the meadow and listed work and supplies needed to make repairs.

BCHA provides Dew Grants. The Freepackers benefitted by buying strong lopers, folding hand saw, first aid kit and bear proof panniers. Cleared trails near Kelty Meadow and Nelder Grove. Plans for 2014 include the Fish Camp area.



Unit News

Middle Velma Lake is a popular destination in Desolation Wilderness, located along the Pacific Crest Trail. Many of the established campsites were within 100 feet of the lakeshore, affecting sensitive resources. Wilderness rangers partnered with the SCA, Wilderness Volunteers, Backcountry Horsemen and Elegant Ears to restore these campsites.



The annual report from Jon Erickson (USFS) shows some of the pictures of, and recognizes work done by, the Mother Lode Unit at Lake Velma this last summer.

Above is a great photo of member Jerry Schaeffer and his white mule with pack string.

Submitted by Mike Kohlbaker
Mother Lode Unit



2013
Rendezvous Sponsors
Star Milling
Integrity Feed
Rock Creek Pack Station
Packing
McClintock Saddles

Please
Support
our
Benefactors



MAIL YOUR BCHC MEMBERSHIPS TO:

BCHC Membership
1280 State Rt 208,
Yerington NV 89447

Board of Director's Meeting Draft

Board of Director's Meeting October 5, 2013 Visalia, California

A. Call to Order: Meeting was called to order at 1:16pm, by President Dennis Serpa.

B. Record of Attendance: Attendance was taken as the Executive Committee and the Board of Directors signed in. The following members were not present:

-Ann Lange, Bob Gage, Carrie Johnen, Cathy Andrews, Rhonda Strickland, Daniel Clifford, Ohlone Riders Unit and Sutter Buttes Unit.

C. Minutes from February 23, 2013: Gail Lyons made the motion to approve the Minutes. Second by John Lyons. Motion carried.

D. Secretary's Report: Kaye Bruns reported the correspondence from July 25 through October 3, 2013. Lynn Joiner also received a letter from One Spade Packers thanking BCHC for the donation. Correspondence is included in the Secretary's Notebook.

E. Reports:

1. Treasurer's Report: Lynn Joiner answered questions on the reports

-credit card income was from the auction, Dave Stamey tickets and registration at the gate

-next year we will use the "cube" since it is attached to Pay Pal.

-credit card purchases made a big difference

Motion to approve the Treasurer's Report by Michael King, Second by Pete Kriger. Motion carried.

2. BCHA: Pete Kriger reported on:

-Money is tight at the National level. They have a lot of paid positions. Looking for ways to earn money. Crowd sourcing- "Kick Starter" is a website where anyone can donate to the cause. BCHA is doing something similar.

-2014 National Board Meeting will be held in Chattanooga, Tennessee. This is the first time it will be held east of the Rockies.

-2015: National Board Meeting will be in Sacramento. We need ideas, advice, and volunteers to put this on. Mother Lode and Mid Valley Units will be helping out. Meeting will be the third weekend of April.

3. Insurance: Richard Waller reported:-60 public days used so far this year

-if you have issues, you need to contact Richard

-each unit should have their VP handle insurance

-go to BCHC website and download the application, complete it, attach it to an email and send it back to him, that is the fastest way to get your response back.

-reminding units that youth under the age of 18 must wear helmets

-no children under the age of 6 can be on a horse at a BCHC activity

-if there is a youth activity, you need to have a medical release form completed -insurance coverage is for non-member that could be hurt by a member's horse.

4. Membership: Chip Herzig reported:

-2864 members, down 150 from last month.

-membership ideas:

2 different types:

-young adults would be \$20 for the first year only

-there will be three units that will pilot this program,

Mother Lode, Los Padres and Mid Valley.

-Los Padres Unit: 18-25 years, living on their own, the unit will pick up the rest of the membership dues.

-sponsorship: memberships on the C3 side- this will be a tax write-off

-memberships need to be Pay Pal friendly. Chip is working with Redshank Riders Unit to test this part of the membership program.

-Membership ideas will come back to the BOD for final approval, once things are working properly.

-February meeting should have a skeletal form of the program to present to BOD

-C4 Bylaws will need changes, and two readings of the proposal are needed.

-\$20.00 is one time only. After that, the membership fee is a renewal and will be full price, unless the Unit wants to pick up the extra dollars.

Education: Dan Horn reported:

-Officer's Training meeting: Motion was made by Michael King, Second by Jerry Stone to have this meeting at the February State meeting, and again at Rendezvous. Motion carried.

-Dan is looking for a co-chair to help him out

-rest of information was presented at the joint meeting with

Public Lands

6. Public Lands: Bob Gage was not present.

-information was already presented at the joint meeting with

Education

7. Public Service: Carrie Johnen was not present.

-information presented at the joint PL and Education meeting

-remember to use the NEW form found on the BCHC website

8. Youth Coordinator: Cathy Andrews was not present. Jacque Murphy reported

-information was shared at the morning Public Lands and

Education meeting.

9. Website: Jacque Murphy reported:

-updates are being made, send her any corrections needed

-unit projects page needs information from the units. Send info to

her

10. Newsletter: Rhonda Strickland was not present. Report by Chip Herzig:

-she needs articles from all units

-extra copies will now be about 300

-Chip and Linda are moving, but they will have one year forwarding. Please make sure the state has correct addresses of unit members.

F. Old Business:

1. Policy Review: Lynn Joiner is having problems with the Dragon Speak program.

2. Rendezvous 2014: already discussed at the morning meeting -had a problem with the mules that were sold, will not do that again.

3. Increasing Membership: Chip Herzig reported:

-proposed changes to membership

-BCHA will have a \$5.00 dues increase as of January 2014

-individual dues = \$50

-family dues = \$60

Board of Director's Meeting Draft (cont'd)

4. BCHC 2015 Lucky Calendar: power-point presentation
-joint venture between the Executive Committee/Board of

Directors/Units

- split 50/50 costs between BCHC and Units
- net is approx... \$40,000 if all calendars are sold
- income = \$62,500 if all sold
- expenses = \$23,200
- profit = \$39,300
- Mid Valley sold 1000 calendars last year for their Unit

Fundraiser

-Unit breakdown for selling is based on demographics report from 2013

- tickets: buyer is responsible for entering their ticket into the drawing-tickets are entered in ALL drawings
- units receive back \$7.90 per calendar they sell
- a synopsis of this information will be put on the website
- February meeting units will be presented with the minimum number of calendars they are to sell
- break-even point will be 919/2500 calendars
- cash prizes: 1st day of the year = \$1000
- last day of the month = \$200
- Saturdays = \$100
- M-W-F = \$50
- last day of the year = \$3000

Motion to approve this fundraiser made by Roland Schmitz, Second by Stacy Kuhns. Discussion held, Roll call vote taken: 22 yes votes, 7 no votes, 2 missing units. Vote count with minutes.

3:05pm - ten minute break

3:20pm meeting resumes

5. Saw Policy: Chip Herzig reported:

- BCHC will certify us
- we can use the Washington State Policy and make it our own
- we will be certified at a particular level
 - cross-cut certification- bucking only (tree is already

down)

- B: every three years for renewal
- C: every 3-5 years

- First Aid and CPR required before you take the class
- cross-cut class is one day, no more "A" classification
- policy needs to be written by BCHC and written clearly

6. Center of Excellence: Chip Herzig reported:

- Michael Morse and Kenny Graves in charge
- BCHC may have the opportunity to attend these classes

7. BCHA National Meeting: hosted by BCHC in 2015

- already discussed at the morning meeting

G. New Business:

1. Update BOD on the following:

a. Mt. Bike issue: BCHA put out a position paper that was not approved. Jim McGarvey BCHA president, wants feedback from BCHC

-trails need to be designed/constructed for the safety of everyone

- Forest Service trail Classifications:
 - level 1- pedestrians and bikes

- level 2- more advance trail

- level 3- equestrians

- safety and education, using common sense on

the trails

-February meeting- there will be a draft position paper on the mt. bike issue. This paper will be included in the 45 day notice with "draft" written on it.

b. Increase BCHC newsletter edition to 4 issues. Not yet, maybe later next year.

c. Membership ideas: already discussed at the morning meeting

d. 2014 Wilderness Act 50th Anniversary- Agencies putting together programs and looking for ideas to celebrate the 50th. Shasta Trinity will be putting together festivities for October 10-12, 2014. Forest Service will be picking up the cost. Local forests may be putting on activities, units to check with agency to see how they can help.

2. Elections: Chip Herzig read the ballot-

President: Richard Waller

1st VP: Lloyd Erlandson

2nd VP: Stacy Kuhns

Secretary: Kaye Bruns

Treasurer: Lynn Joiner

BCHA: Pete Kriger (2014-2016), Ann Lange (2013-2015)

Education: Dan Horn and Denise Robinson

Public Lands: Thor Bodtker

Membership: Chip and Linda Herzig

Youth Coordinator: Jacque Murphy

Motion to accept the slate made by Troy Patton, Second by Michael King. Motion carried

H. Other Business/Announcements:

1. Newsletter needs articles on unit projects
2. Jim Griffith reported that Sam Burrows surgery went well.
3. Need photos for the 2015 Lucky calendar
4. Next State meeting will be February 14-15, 2014
5. Units that have not sent in their End of Year Unit Report need

to do so

I. Adjournment: Meeting was adjourned at 4:30pm

Members will have dinner and unit reports at the Farm Bureau building in Visalia

Respectfully submitted,

Kaye Bruns

BCHC Secretary



BCHC Rendezvous 2014

BACKCOUNTRY HORSEMEN OF CALIFORNIA
RENDEZVOUS
 BACKCOUNTRY HORSEMEN



TRAVELIN' YOUR TRAIL THRU LIFE

MARCH 21-23, 2014

**Norco, CA • Horsetown USA
 George Ingalls Equestrian Event Center**

OPEN TO THE PUBLIC • ADMISSION IS FREE

Events Include:

- Trainers: Jerry Tindell & Robin Bond & Shawna Karrasch •
- Dinner & Auction • Kids Activities • Auction & Raffle •
- Trail Trials • US Forest Service Pack Mule String •
- Beer & Wine & Cheese Meet & Greet • 75+ Vendors •
- Raffles for a McClintock Saddle and Pack Trip to the Eastern Sierra •
- Cowboy Church • Contests • & More! •

Featuring Friday Night Show:



Dave Stamey
 Nationally Acclaimed Cowboy
 Entertainer www.davestamey.com
 Advance Tickets: \$22.00
 At the Door: \$25.00
 For Event Ticket Packets or Stamey Tickets go to
www.bchcalifornia.org

FOR MORE INFORMATION, visit bchcalifornia.org
 Or contact Roland Schmitz at (951) 833-6403 or email: roland@mntnrider.com
 or Thaddeus at (951) 223-8027 or email: cjc6714@icloud.com



Update from the Rendezvous Committee

This year we will be offering free guided trail rides on Thursday and Monday so bring your favorite riding steed. In between these days, Rendezvous will be offering three full days of FUN!

There is something for everyone! Clinicians Mule Man Jerry Tindell, Cowboy Challenge Winner and Trainer Robin Bond, Clicker Trainer Shawna Karrasch, Robert Trail Meister Eversole, and the renowned saddle maker, Gary McClintock. For the kids we will have the kids' corral with coloring contests, stick horse races and more! There will be educational presentations from equine health, packing, trailer safety, Gentle Use principles to Dutch oven cooking demos. Come see an American icon the American mustang with the BLM adoptions. Did I say shopping? Yes, we have shopping with 100 vendors along with a beer and wine meet and greet.

Have a little competitive edge? Bring your best artwork and enter the western art show. Or how about your culinary skills? Dutch Oven Cook Off! Now, do you really have a favorite trail mount? Enter your equine partner in the indoor Trail Obstacle Course, testing your communication skills negotiating natural trail obstacles. Whew! With two new divisions this year even the youth have a chance to win a buckle.

Okay, now with all of this, what about the night life, you ask. Of course, we will be offering Friday and Saturday night dinner. This year we are proud to have award winning Backwoods Catering cooking for us. Being on the committee we had the opportunity to sample and taste test their excellent Bar-B-Que consisting of pulled pork, chicken, smoked Tri-Tip, homemade beans and, if you can handle it, HOT Louisiana Sausages! HOLY MOLY!

After Friday night dinner we will be entertained by nationally acclaimed cowboy entertainer, Dave Stamey. You don't want to miss him! "Good times" as we say in our unit. Last, but not least, Saturday night again great food from Backwoods and the famous Rendezvous auctions. So, go to the BCHC website and check out the Rendezvous link and get your registrations, camping and concert tickets early. **YOU DON'T WANT TO MISS THIS!** See ya there!

More info including registration packet:
www.bchcalifornia.org

BCHC-San Diego Unit Assists the California Mission Riders

Story and photos contributed by by Martin Jorgensen

The California Mission Riders are a group of seven equestrians led by Gwenyth Horder-Payton who started out in 2012 with the goal to ride to every Spanish mission in California. They started at the north end of the state in 2012, took a break for the winter, and finished their ride at the San Diego Basilica Mission de Acala in October 2013. Read more on page 25.



Domencio and Rod on the trail down to Lakeside. Photo by Joey Solazzo



CMR rider Rod Rondeaux, BCH-SD Vice President Patty Heyden, and Traveler at the San Diego Mission. Photo by Joey Solazzo

California Mission Ride 2013



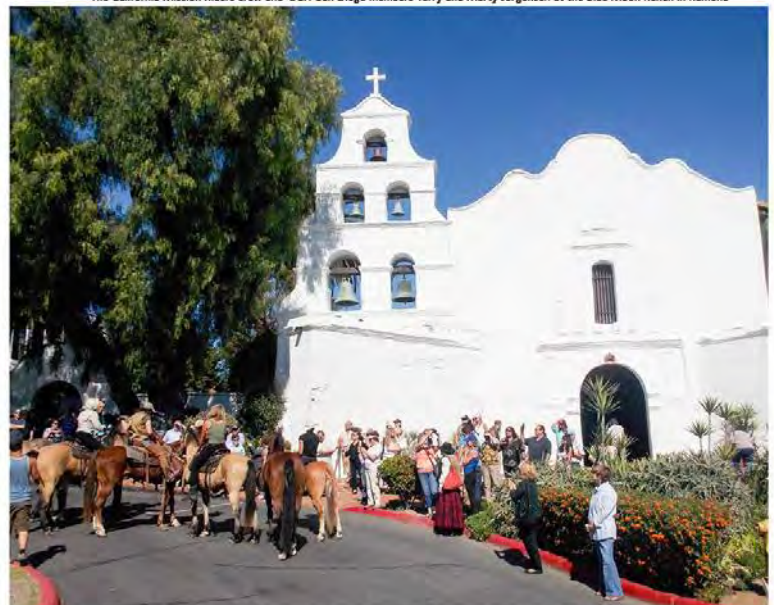
The California Mission Riders crew and BCH-San Diego members Terry and Marty Jorgensen at the Blue Moon Ranch in Ramona



The last part of the ride through urban San Diego. Photo by California Mission Riders



The horses highlined behind the mission. Photo by California Mission Riders



The riders being greeted at the Mission San Diego De Acala at the end of their ride. Photo by Joey Solazzo

BCHC Membership Application

- NEW MEMBERSHIP APPLICATION Backcountry Horsemen of California
 RENEWAL APPLICATION 
 CHANGE - () PARENT UNIT () ADDRESS/PHONE/EMAIL () MEMBERSHIP TYPE

DCTR (YOUR MEMBERSHIP NUMBER) _____

***NEW MEMBERS WILL BE ASSIGNED NUMBER BY MEMBERSHIP COORDINATOR*

PARENT Unit Affiliation: (Select and CIRCLE ONE Unit as your Primary Unit Affiliation)

- | | | |
|-------------------|-------------------|--------------------|
| Antelope Valley | Mid Valley | San Joaquin Sierra |
| Eastern Sierra | Mother Lode | Santa Ana River |
| High Country | North Bay | Sequoia |
| High Sierra | Ohlone Riders | Shasta Trinity |
| Kern River Valley | Redshank Riders | Sierra Freepackers |
| Kern Sierra | Redwood | Sutter Buttes |
| Lake-Mendo | San Diego | Top of the State |
| Los Padres | San Geronimo Pass | |

MAIL TO:
 BACKCOUNTRY HORSEMEN
 OF CALIFORNIA
 1280 State Rt 208
 Yerington NV 89447
<http://www.bchcalifornia.org>

**Donate to BCHC
 Education Fund?
 Tax Deductible**

Packer \$10.00
 Mule Skinner \$25.00
 Other (Write in) \$ _____

MEMBER'S NAME - *No Business Names; Please Print Clearly* _____ SPOUSE/MEMBER'S NAME - *MUST SHARE SAME ADDRESS* _____

ADDRESS _____

CITY _____ STATE _____ ZIP _____ PHONE _____

EMAIL ADDRESS _____

Make Checks Payable to: BCHC CHECK # _____ DATE SUBMITTED: _____

TOTAL ENCLOSED: \$ _____

BUSINESS NAME - *DONATIONS ONLY:* _____ PARENT UNIT MEMBERSHIP TYPES: (CIRCLE ONE)

Individual \$50.00* Family \$60.00* Benefactor \$100.00 Patron \$250.00 Mt Whitney \$500.00

**-BCHC shares portion of dues with Backcountry Horsemen of America*

ASSOCIATE MEMBERSHIPS: AN ADDITIONAL \$15.00 PER UNIT IS ADDED TO YOUR PARENT UNIT DUES.
 ASSOCIATE MEMBERSHIP UNIT AFFILIATIONS MAY NOT BE FOR THE SAME UNIT AS YOUR PARENT UNIT.

Associate Membership for: _____ \$15.00/unit (Unit Name (from above list))

Associate Membership for: _____ \$15.00/unit (Unit Name (from above list))

Please write additional choices on back

Please clip form along dashed line - KEEP BELOW INFORMATION FOR YOUR RECORDS

PARENT BCHC MEMBERSHIP TYPES
 Individual, Family (Shared*), Benefactor, Patron, and Mt Whitney. A Parent Membership is affiliated with a single Local Unit. BCHC members may NOT hold more than one active Parent Membership.

A SHARED Membership is for two adults with differing last names, each sharing a common address.

ASSOCIATE MEMBERSHIPS
 These special Memberships are only available to persons already holding Parent BCHC Membership. No one may sign up for an Associate Membership without 1) having registered one of the Parent Membership types, and 2) having selected Parent Unit affiliation.

- You may sign-up for as many Associate Memberships as you like.
- Associate Memberships may also be initiated at any time during the term of your Parent Membership.
- Associate Memberships must expire concurrently with the Parent Membership, and are renewable only at the time of renewal of the Parent Membership.

Complete information regarding BCHC Membership is available on the MEMBERSHIP page at: <http://www.bchcalifornia.org>

KEEP FOR YOUR RECORDS
 I SUBMITTED AN Application Form for:

<input type="checkbox"/> Individual Membership	\$ 50.00
<input type="checkbox"/> Family (Shared) Membership	\$ 60.00
<input type="checkbox"/> Benefactor Membership	\$100.00
<input type="checkbox"/> Patron Membership	\$250.00
<input type="checkbox"/> Mt Whitney Membership	\$500.00
<input type="checkbox"/> Donation - Packer	\$10.00
<input type="checkbox"/> Mule Skinner	\$25.00
<input type="checkbox"/> Other (Write in)	\$ _____
<input type="checkbox"/> Associate Membership	\$ _____
Total Remittance	\$ _____
Check Number _____	_____
Date Mailed _____	_____

Questions: Contact membership@bchcalifornia.org



Unit News

BCHC Sutter Buttes Unit 2013 Year in Review

Story and photos submitted by Bob Gage
BCHC Sutter Buttes Unit President

This year has been a busy and productive year for the Sutter Buttes Unit of BCHC.

Early in the year Unit President Bob Gage attended and helped facilitate a BCHC presence at the California Trails & Greenways Conference at the Granlibakken Resort, North Shore Lake Tahoe, Ca.

Bob, serving as BCHC VP Public Lands, BCHC Sutter Buttes Unit President, CT & GF Board of Directors, Member & Presenter, was assisted by BCHC VP Richard Waller and San Diego Unit member Julie Murphy at the display booth at the conference.



trail open and passible to all those who travel the trail. The task of clearing logs from the trail was done in four separate trips by different member in each trip. A big Thank you to all those Sutter Buttes Unit members who helped keep the PCT open and passible for travelers.



Equestrian Trails Celebration, Red Bluff, Ca.



SBU members supported and attended the Equestrian Trails Celebration held at the Tehama Dist. Fairgrounds in Red Bluff, Ca. (Photos from Dorothy Foster)

Sutter Buttes Unit Pancake Breakfast Fundraiser, Lake Oroville, Ca.



The Sutter Buttes Unit held Pancake Breakfast at Lake Oroville, Brooks Orchard, riders participating parked their rigs at the Saddle Dam parking area and rode to Brooks Orchard where Sutter Buttes Unit members had a

Pancake Breakfast ready and waiting for them, then rode back to their rigs. Thank you to all SBU members who were involved in the event.



Sutter Buttes Work Party Activity



The Sutter Buttes Unit of BCHC has adopted a section of the Pacific Crest Trail from Hwy 70 in the South to Hwy 36 at the north end, a distance of approximately 42 miles. This year 10 SBU members, Larry Kling, Jerry Smith, Ralph Looney, Terry Mason, Bill Colvin, Becky Gage, Dorothy Foster, Marlene Rold, Charles Williams and Bob Gage worked to keep the



Sutter Buttes Unit and PCT

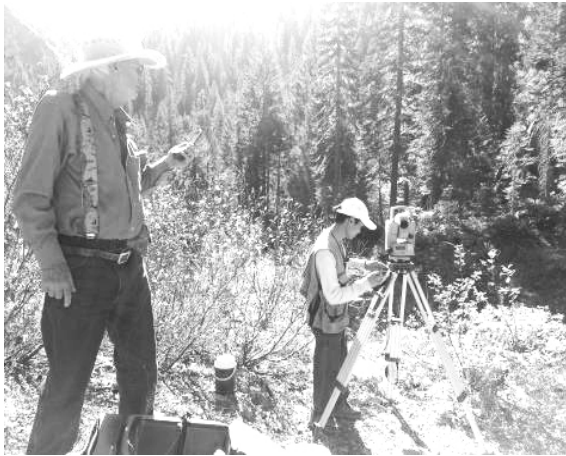
About 13 years ago there was a large washout along the PCT near Chips Creek, for years the SBU has had to clear debris from the creek crossing and help to keep the trail open to

trail users. We have been working with the Forest Service to find a sustainable solution to this section of the trail. This year Bob Gage took several Forest Service personnel into the site on horseback to see firsthand the conditions faced in this area of the trail. Bob took his horses and Lassen NF

Cont'd on Page20

Unit News

BCHC Sutter Buttes Unit 2013 Year in Review (cont'd)



alternative to the current trail condition in the area. Bob met the "crew".

About 2 months later, Ralph Looney and Bob Gage rode from Milkhouse Flat to the PCT Chips Creek Crossing and

Trail Coordinator and Lassen NF Assistant Engineer, and PCTA coordinator to the PCT Chips Creek crossing to see firsthand the area of the washout from approx. 13 yrs ago, and a potential reroute or sustainable



met with three NF engineers surveying the site for two new bridges to be built to develop a sustainable crossing/trail in the area of the Washout of the PCT in that area.

Hopefully this project will be completed in 2014/2015.

2013 Fish Plant

By Dale Payne

Article submitted by Kathryn Matthews

Photos submitted by Barbara Schuyler

Top of the State's fish plant went well again this year. With the eight lakes that we planted, we released 8,250 Rainbow Trout fingerlings.

I want to thank all of my packers (Bill Kleaver, Don Menne, Doug Kaufner, Fred Miles) and crew (Sherry Glendenning and Shari Kaufner, photographers) for the help. If it wasn't for these folks, the fish plant program wouldn't exist.



Dale Payne Achievement Award

A special thanks to the Kleavers and Kaufners for packing in the camp for our over-nighter and to Don Menne for packing in the food. There were 16 folks who went in for the over-nighter.

Now on a sad note, this is my last year putting the fish plant program together. I have been doing it for over 10 years, so it is time for me to step down and let somebody else put the program together. It has been a great ride, working with all of the Fish & Wildlife folks and all of the BCHC (Top of the State) folks. As I said earlier, if it wasn't for all of the packers like Bill Kleaver, Bob Dean, Don Menne, Fred Miles, Doug Kaufner, and everybody else that helped with the program, it wouldn't have happened.

Also, a special thanks to Jennifer Bull for working so hard to get more lakes to plant. We used to plant 16 to 18 lakes but we are down to eight lakes. Jennifer is working to get more lakes to plant, so keep up the good work, Jennifer.

I also want to thank the Forest Service's Sam Commarto, Ellen Andrews, and the trail crew for getting the trails opened up sooner than the other trails for the fish plant. Thanks to John Lyons for getting a crew out to pre-ride and cut out the trees to the lakes that were scheduled to plant. Thanks to my wife, Mida, for getting our animals ready at "0-dark-thirty" while I pick up the fish, and for helping me weigh out the loads. Also, thanks to Virgil and Linda Hardy for driving out to my place to help weigh and balance the loads.

Unit News

Mother Lode Unit to Host Electronics Waste Recycling Fundraiser

By Cathy Andrews

The Mother Lode Unit (MLU) has scheduled their second e-waste fundraiser for January 4 at Town Center in El Dorado Hills, CA, from 9 a.m. to 1 p.m. That may seem a long ways off in the future, but the pre-collections are starting NOW. Got e-waste, anyone?

What is e-waste? Anything that has an electrical cord, from hairdryers to TVs, and many things that don't have cords, like CDs and DVDs. All materials are shredded to ensure protection of privacy, and then recycled at the California Electronics Asset Recovery center in Mather, CA (a suburb of Sacramento).

The MLU will accept big or small loads, and can help with pick-up in some cases if enough is donated to make the trip worthwhile. Last year, MLU members worked with Phil's Affordable Hauling to help empty and recycle two warehouses of miscellaneous electronics. MLU raised over \$1,000 to buy chainsaw chaps, hardhats, and other supplies for building trails in conjunction with the U.S. Forest Service in our Desolation Wilderness area of the Sierra Nevada. This year the Mother Lode Unit hopes to raise funds to build a new horse camp near Kyburz, CA.



MLU "Hangs" in Lynch Canyon

By Lucy Badenhoop

Sunday, November 17, 2013, found the Mother Lode Unit riders hanging out in Lynch Canyon near Fairfield, CA. The group rode out a little after 11 a.m. and spent the next three hours wandering through the coastal hills for 7.3 miles. Everyone enjoyed a splendid fall day on trails that were a mixture of single track or dirt maintenance roads.

There were many picnic tables to choose from, but the group chose to snack in the saddle. There were also several livestock

gates that required opening and closing as the group passed through. This chore was graciously handled by our docent, Denise Zavat.

Cows and their calves wandered about or watched the riders pass by their shady resting spots. Trees were scarce and mainly located in low areas protected from the wind and catch basins for water. On the sea side of the hills, trees perched at the ridge top and were sculpted by the wind.

A few birds of prey circled in the sky watching our group return to the trailhead and load up for the drive home.



Unit News

Jerry Tindell Clinic

Story contributed Valerie Perry - Mid Valley Unit

On November 23-24 fifteen BCHC members attended a Jerry Tindell clinic at the Stovell Ranch in Wilton, Ca. I was pleasantly surprised to find that we would be horse camping along the Consumnes River, thus encouraging the participants to use our LNT.

Saturday started promptly with an 8 am meeting. Jerry briefly discussed our itinerary for the day and then went straight to demo on how he expected us to move our horse's hooves while doing ground work. Then he asked if we had any questions, concerns, or problems with our horses. The reply was that our horses or mules that would not stand still, move out, or were sticky. The reply was one I have heard before and to this day makes me chuckle. "He's not broke to lead".

When you first hear that, you think "My stock follows me." Jerry asked if he could have one of the animals to work with. When he started to work with the mule, you could see, "that he was not broke to lead". After discussing the problem, he showed how to fix it. Suddenly a group of people and their stock were all licking, chewing and thinking very hard about what they just saw. That was the beginning of our transformation.

We then went to a relatively flat area with both small and large obstacles to work around. We set about our task of ground work and directing the movement of hooves. Jerry's method makes both stock and handler pay close attention. By doing this you come into tune with your stock and them to you. They respond quickly.

After completing our groundwork we watered our stock and broke for lunch. During lunch we talked about what each of us had learned in the morning session. I kept hearing, "I thought my horse or mule was broke to lead". Some of us took time to do more ground work.

Jerry helped those whose horses did not load well into trailers. It was enjoyable to watch the trailer loading. No drama, no theatrics, just simple solutions that work.

After lunch we all got on our horses and rode the 100 yards to the Consumnes River to do mounted work. Jerry discussed technique and theory of the one rein stop and helped those who had difficulties with water crossings. The rest of us listened and watched.

Then it was off to the track at the river bottom. The washed sand gave our horse's excellent footing. The surroundings were all natural, just like trail riding; A real working environment. Jerry asked if anyone thought their horse would give them any problems and went on to explain how to handle it. We were given our assignment; we were to trot and then do a one rein stop. A group of 15 horses and riders proceeded to trot off. Some horses

sped off, some shied away from other horses, some simply bucked and others were fine. Jerry helped us all, leading those who needed to be led, encouraging those in need of encouragement, teaching all the way. After a while things calmed down, stock relaxed and listened to the rider, moving freely, stopping lightly. The session ended with questions and answers.

Saturday night we enjoyed a potluck around the campfire. We all talked about what we had learned and how it would help us as equestrian trail riders and the impact it would have on those we meet on the trail. Most importantly the positive impact it was having on us, as BCHC.

Sunday morning we were mounted with those of us who brought our pack animals saddled and ready to go. Jerry demonstrated leading exercises while emphasizing the importance of maintaining proper position and consistency of handling. The end result; they behaved, stood still and paid better attention, all of this from simple exercises we had learned.

Jerry wanted to work with a big horse who was very troubled; for this we went to the round pen. The process of change took some time all while Jerry was explaining in detail the use of the round pen. He pointed out subtle changes that were occurring. Then the changes began to come quickly and we saw a new horse standing before us. His owner was amazed by the change. We broke for lunch.

That afternoon we went back to the round pen and watched the owner work his horse. He was thrilled that the horse came to him. Next we were all in or around the round pen, learning the process of having the horse side up so you can get on. I won't tell you how it's done, but it was pretty cool. We finished that day with a relaxing trail ride all of us riding new horses and mules. What a great way to end two very full days at a clinic.

I would like to say something about this group. Some have attended clinics in the past, some never had. Some are experienced horseman or mule men who have owned, packed and or ridden their whole lives, others have not. All kept an open mind and learned. Everyone learned something from this clinic that would help enrich their relationship with their stock. Whether it made us safer, gave us more confidence or put us one step closer to unity, it enriched us.

Thank you, Jerry Tindell, for your patience and sharing your techniques and wisdom with us.

Thank you, Dennis Serpa, for your hard work arranging this clinic for BCHC. Best wishes to the continuing success of this program.

Unit News

Foster Cabin Trip October 13 2013

The historic Foster cabin built in 1946 by Trinity Farm Land and Cattle Co and State of California has regained its status as a winter shelter for the

California Water Resource Snow Survey crews.

It replaced an old two room cow camp that had been built before or around the turn of the century as a cooperative effort between Trinity Farm and the State to be used in the summer as a cow camp and shelter for the snow surveyors.

There was considerable controversy and some delay in finishing as Trinity Farm had agreed to build a two room cabin, however the State only funded a one room cabin. Each winter 4-5 trips to measure snow depth at the half dozen + survey stations. For many years all surveys were done on skis with trips up Coffee Creek to Big Flat up the Yellow Rose trail, over Sunrise Pass, down Swift Creek to the Cabin, then up Bear Basin, Deer Flat, Lilypad lake (for a short time), Shimmy Lake and some other locations. The Swift Creek crossing in mid winter to Bear Basin was accomplished with a cable car across the creek below the cabin. Trails were followed in deep snow by old license plates nailed high up on trees next to the trail that can be seen today. Josh told me he wasn't sure that wasn't better than trying to cross the Bear Basin bridge with the snow cone cap of frozen snow. Four years ago the Forest Service determined they would stop supporting the surveys by helicopter, thus restarted the trips on skies. Even though many of the sites have remote 24 hour wireless monitoring snow depth, temperature and water content transmission verification is required.

For the last 4 years the survey crews have either back packed in all their supplies and



instruments or have in the fall left a small cache at the cabin. This year funding to repair and maintain the cabin, take adequate supplies in and install a wood stove was obtained. Early in the year we were approached to help supply the cabin and haul in the food, tools, wood stove, stove pipe and ridge caps for the roof. Sunday October 13 on a beautiful fall day Shasta T BCH members, Lyle and Laurie Charter, George and Claudia Lawrence, Larry Shuman and Alan Hill showed up with 11 horses and mules to meet Snow Surveyor Crew leader Josh Smith. He showed up with a pickup full of unwieldy stuff that we were able to sort out and get all loaded with one mule left over. We figured we could also pack Josh Smith's heavy back pack in on one side of the mule that had a large tin storage box on the other side saving him the pack.

We knew Josh was relieved we had his heavy pack on a mule, but didn't fully realize until we were coming out the real reason. Josh had stayed at the trail head to wait for the rest of his crew, so when he didn't show at the Cabin we waited until we thought he may have planned for the next day. We ate lunch and met him on the trail at Parker with a one year old boy on his back, his wife and two others all loaded down planning to stay overnight and get the cabin ready for the winter. Not sure how the plan would have worked to put the one year old boy on top of an already heavy backpack.

It was a fun trip and great to see the effort to repair and maintain the old landmark log cabin.



Maybe a little help for the barn can be next.

Submitted by Kim Gardner & Janis Hill

BCHC Shasta-Trinity unit



Unit News

Rendezvous Obstacle Challenge

By Audrey Turpin, Redshank Riders
Rendezvous Obstacle Challenge Committee

One of the events at Rendezvous 2014 is the Obstacle Challenge. Near and dear to my heart, I have been competing in Trail Trials and Cowboy Challenges for a few years and have also competed at previous Rendezvous Trail Trials. When Rendezvous came down south in 2013, I jumped at the chance to oversee and run the Obstacle Challenge.

First of all, the event is an arena competition of natural and not so natural trail obstacles that you and your equine companion may encounter out on the trail. Now keeping this in mind, we have all been out there riding along and come upon the strange and unusual that could completely blow your equine's mind. Example, just last summer Stacy and I were riding along a tree-lined, quiet trail when our normally well-mannered mounts suddenly started to get jittery and tried to swing around to look behind us. Running behind us was a young lady jogger with a bouquet of blue balloons, a bottle of wine and a blanket. Well, we jumped to the side of the trail and let the horses (wide-eyed, needless to say) take a good look at the huffing and puffing woman running past. She exclaimed that she was setting up a private surprise birthday party for her boyfriend. She had only so much time and had to get back before he got off work. Off she ran with her 15 balloons for her own little nightly rendezvous. You can't make this stuff up.

Now back to the obstacle challenge. We will have five divisions: Open, Amateur, Novice, Youth and Packers. The riders will encounter 10 or so obstacles that could include bridges, campsites, gates, balloons, well, you get my drift. The competitors will be challenged on their communication skills and the training of their mounts. It is not a timed event but you only have so much time to complete the course. Watching the exhibitors manage their mounts through the route is a favorite of Rendezvous spectators.

I really enjoy watching the Packers complete the course. Not only do you have to get your riding animal through, you need to be able to negotiate your pack animal also. Sounds easy, doesn't it? Sometimes that pack animal says it's just easier to go around rather than through and drags your arm with it.

Well, I don't mean to scare you. If you're up to the challenge, we are awarding silver buckles from Molly's Buckles to first and awards on down. Never done a challenge before? Try the Novice division. This will be general obstacles. Think ole Dollar got what it takes? Enter the Amateur division.

Feeling like a pro? Enter the Open division. We even have a Youth division, so bring the kids with their favorite trail companions. Go to www.bchccalifornia.org, under the Rendezvous link for entries and rules. Or email me at obstacle-challenge@netzero.com for info, entry and rules.



RENDZ
2013

Photos by
Laurie Stanton
& Rhonda Strickland



Unit News

California Mission Riders

(cont'd from page 17)

A film and support crew followed them the entire route and a documentary is in the works. Most of the crew are from the Los Angeles area and work in the film industry. Members of several different BCHC units assisted the riders with route planning and logistics as they traveled down the state and a lucky few were able to spend a few days riding or camping with them. Some of the route was through remote and rugged areas, while other portions were in developed communities and required riding on city streets. Members of the BCHC-San Diego Unit helped the riders with route planning, led the group the last three days of the ride, and had the honor of riding into the San Diego Mission with them.

The unit also worked with Monsignor Duncanson of the San Diego Mission to establish an appropriate location on the property to highline the stock during all the festivities. The riders and their support crew stayed at BCHC-SD members Terry and Marty Jorgensen's Blue Moon Ranch one night and were treated to a potluck and party by the unit. The next night the unit was able to arrange for the riders to stay at the Pillsbury riding facility in Lakeside and we hosted another potluck/party attended by members of several local riding organizations. A great time was had by everyone involved and we look forward to seeing the documentary.

Thanks to BCHC-SD members Terry and Marty Jorgensen, Patty Heyden, Julie Murphy, Cheryl Wegner, Joe Solazzo, and everyone else who went out of their way to make these great folks feel welcome. I feel honored to have been a small part of it all and look forward to riding with the California Mission Riders again soon.



The riders being greeted at the Mission San Diego de Alcalá at the end of their ride. Photo by Terry Jorgensen



Logan Coach Rebate Program

Exclusive to BCH Members

As a special rebate for Backcountry Horseman members, Logan Coach will give the following rebates/donations when you purchase a new Logan Coach trailer:

- .5% of Retail Price Paid Donated to BCH State Organization
- .5% of Retail Price Paid Donated to Customer's Local BCH Chapter
- .5% of Retail Price Paid as Rebate back to Customer

Ask Your Logan Coach Dealer for details.

See the 2012 Logan Coach Line at www.LoganCoach.com

All you will need to get the rebates sent out is a copy of the invoice for the Logan trailer you purchased from the retail purchaser & what your unit & state is.

You can send that directly to Steve Hales ~ Logan Coach
Phone (435) 752-3737 Fax (435) 752-3756

The deadline for submissions for the
SPRING/SUMMER EDITION

of the Backcountry News is:

April 19, 2014

Send submissions to BCHC.News@gmail.com

or mail to: Rhonda Strickland

Restless Designs

27150 Shadel Rd. SPC 119, Sun City, CA 92586

Unit News

Lake-Mendo Unit Demonstrates How to Pack a Mule for the Back Country.

Submitted by Paul Villanueva Photo by David Thiessen

Debbie Watson and Paul Villanueva

Present Wag, Walk, Wride at Boggs!

Cobb, CA – Nov. 12, 2013 - On a stunning autumn day in October, the Friends of Boggs Mountain (FOBM), the Lake-Mendo Unit of the Back Country Horsemen of California (BCHC), Main St. Bicycles, and the Clear Lake and Kelseyville High School Bike Team came together to hold the “Wag, Walk and Wride” trail etiquette event at Boggs Mountain Demonstration State Forest.

BCHC President, Paul Villanueva, kicked off the program with a brief description of the Back Country Horsemen’s mission and goals. Villanueva explained their core mission is to preserve and protect existing trails, support multiuse where it already exists, and help foster goodwill among all trail users in Lake and Mendocino Counties.

The BCHC also provides a valuable service for government agencies such as the Mendocino National Forest that avail of horse and pack stock to haul equipment in and out of the backcountry where motorized vehicle access is not possible.

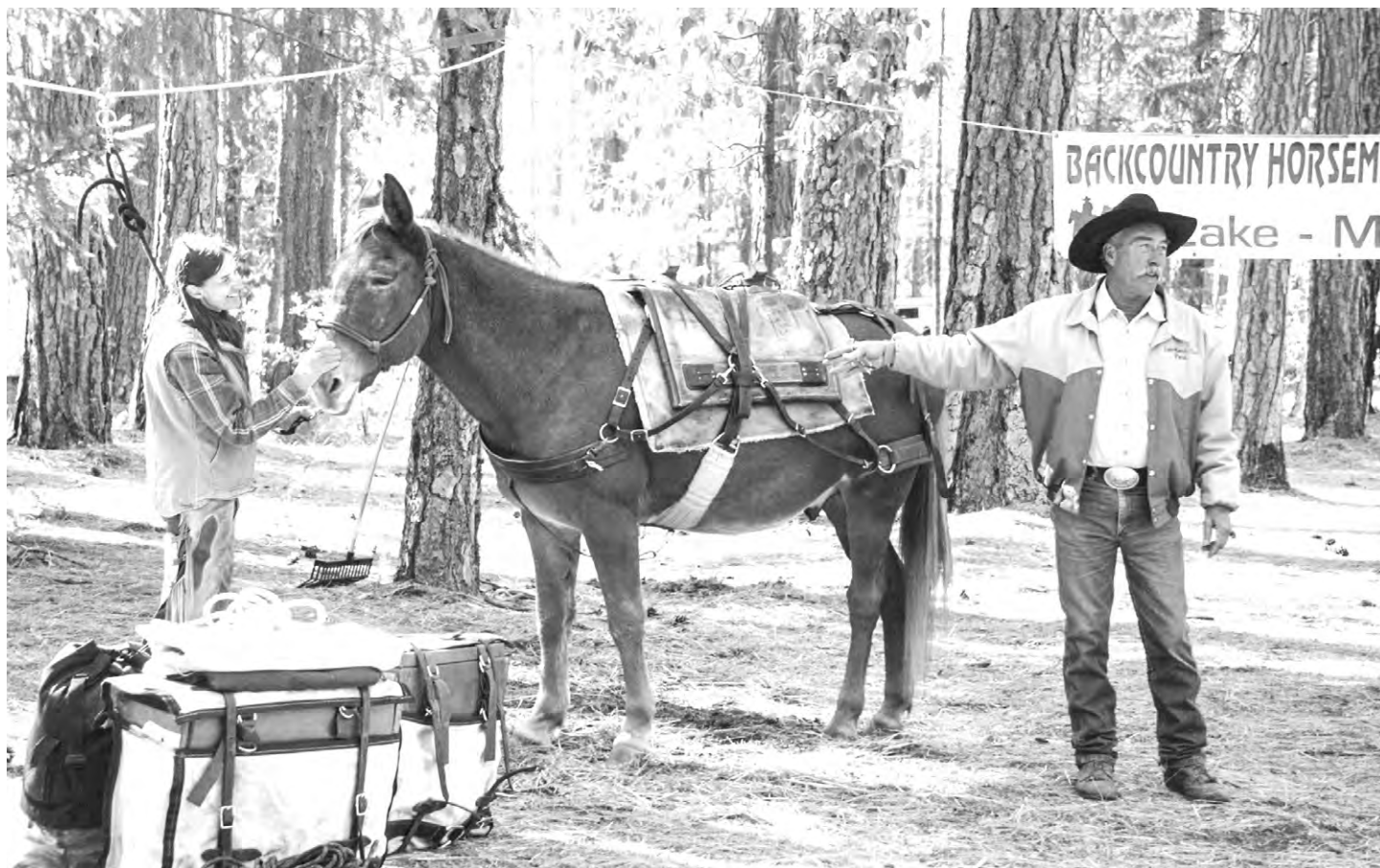
In addition, the BCHC strives to educate trail users on proper trail etiquette to minimize user conflict. For instance, Villanueva recommended stepping off the trail on the downhill side to let equestrians pass as horses may consider someone or something above them a predator. Another helpful tip was to calmly talk to the horse and rider as you approach to help assure the animal that you are not a threat.

On some occasions, people will step aside and wind up behind a brush or tree thinking they can avoid disturbing a horse altogether. “What might be considered courteous could actually result in agitating a horse on a trail,” Villanueva warned.

As prey animals, horses are always on the lookout for predators, and something unseen that makes a movement or noise near the trail can spook them. Villanueva emphasized that because hikers and mountain bikers need to yield to horseback riders, it’s often best for the equestrian to communicate with other trail users and guide them in a way that keeps their horse calm. In addition, it is recommended that young or green horses are

slowly introduced to multiuse trails, and even experienced horses should be desensitized to many different objects and animals. Villanueva enjoys seeing his grand kids have fun riding their bikes around his horses, as it’s a great way to get them used to bikes on trails.

Sarah Reid, State Trails Chair of the California State Horseman’s Association, was next to speak, and gave a broad picture of the California trail system. She also discussed steps taken at Annadel State Park in Santa Rosa to avoid conflict in a region that sees considerably more trail traffic than Boggs. As a member of the Mounted



Unit News

Wag, Walk, Wride at Boggs! (cont'd)

Assistance Patrol, Reid and other volunteers serve as “trail ambassadors” ready to lend assistance or to provide gentle reminders on trail etiquette.

Reid also demonstrated some ways to understand the body language of a horse. Lake County Horse Council president, Virginia Vovchuk, led her lovely Morgan horse Shalako, toward center stage. Reid pointed out that Shalako’s lowered head, cocked position of her hind leg and ears slightly to the side are generally signs of a relaxed horse.

To illustrate a horse’s startle response, Reid rustled the BCHC banner behind her, and Shalako suddenly raised her head, her ears spun toward the sound, and her muscles stiffened. “Buckin’ Benny”, Villanueva’s trusty pack mule that appeared to be dozing nearby, also gave a start. This demonstration was a reminder that equestrians have a responsibility to be able control a half-ton animal as best as they can, as well as for other users to be mindful of how they might elicit this response when approaching horses from around blind corners or from behind.

The Clear Lake and Kelseyville High School Bike Team were next on the program. With the help of four members of their team, Coach Tami Cramer briefly covered the history of the co-ed team and their plans for the future, which included growing the team through “interest rides” at Boggs this fall.

To assuage trail user concerns about the training they do at Boggs in the winter and spring, co-coach Jeff Cramer emphasized that team members concentrate on technical riding, not speed. The young cyclists then explained the policy they strive to observe in interacting with other trail users, consistent with the trail courtesies discussed in the earlier part of the program.

Cramer went on to describe the arduous physical training mountain biking requires and how the experience helps to shape the kids’ attitude toward exercise and the outdoors, as well as instilling confidence.

One of the highlights of the day came as bike team members took turns riding on a different kind of saddle, courtesy of Shalako. Vovchuk helped them get a feel for what it’s like to be 8 feet off the ground, and to put themselves on a mount that

requires a different kind of skill and knowledge.

Every boy grinned from ear to ear, enjoying the higher elevation, but confessed some apprehension of “not quite being in control”. Hopefully, this realization gave them a more empathic understanding of the horsemanship skills required to handle a horse, especially on a multiuse trail where all sorts of things can unexpectedly come at or behind you.

Finally, Villanueva and Debbie Watson of BCHC took back the reins of the program and gave a terrific hands-on demonstration on how to pack a horse or mule for an extended backcountry trip. They described the use of “panniers” – larger versions of road bike luggage - how to securely strap them on a pack saddle, the necessity of balancing the weight, and “smart packing”. Since Villanueva often spends weeks in the backcountry, the ability to carry everything you anticipate along with a few MacGyveresque skills and tools is critical. The Cramers, who own Main St. Bicycles, got Specialized Bicycles at a recent visit to a trade show to provide free water bottle giveaways stuffed with Halloween treats. After refreshments, several participants took off for a “wag, walk and wride” to enjoy the rest of the Indian summer day.

“I went to an event like this at Montaña De Oro State Park near San Luis Obispo earlier this year,” explained Gigi Stahl, event organizer and FOBM volunteer, “and admired the camaraderie and trail stewardship in that group. FOBM feels that as more and more visitors come to Boggs each year, we need to develop a trail culture that is inclusive and prepared to handle heavier use in a diplomatic and informative way.

Kids and adults in our local community are our trail ambassadors, and we’re grateful to Sarah Reid, other out-of-county as well as local participants who came to show their commitment to trail user education.”

“The Lake County Horse Council is a strong supporter of safe trails and education,” Vovchuk added. “It was great to share information about our horses with other trail users, and learn what we have in common.” To keep the momentum going, the Friends of Boggs will be rolling out a trail etiquette brochure in early 2014.

Information

WELCOME, NEW MEMBERS!

The following new members have joined BCHC between
September through December 2013

Antelope Valley High Country	Rand Brooks and Kathy Mydock Shelly Barnet and Ginny Barnett Jerry Sweeney
Kern Sierra	John Hinds Vance Jarvis and Karen Lord-Jarvis Kristen Levandoski Bryan and Kara Marsh Tracy Schroeder
Los Padres	Charlene Ackerman Sarah Araya Marianne Bankston Marney and Arnie Briggs Diane Bustillos Denny Elston Jan and Danny Evans Cherie Foster and Richard (Dick) Berry Carol Friend Jeanine Gigi and Jeff Greene Nick and Guriel Marlene Jacobus Jay Manning Cullen McAlpine and Patricia Nevers Rose Marie Meyer Marilyn Morris Megan and Al Nath Ginger O'Neill Shirley Scales Lori Scobie Denise Strand Linda Tarbell-Messer Jeannie and Andy Thornton Trina and Tim Wilson Dorothy York
Mid Valley	Julie Baker Derek and Sunshine Letsinger Royce and Cheryl Spears Crista and Mike Swier Tami A. Yamaichi
Mother Lode	Jana Bidwell Tom Celio Penny and Rick Cochran Carolyn Foulk Elizabeth Karmazin Rob Krensky Lisa Mickler Rhonda Petrovich Pamela Robinett Jenny Smart Heidi Torres Rudge Wynn
North Bay Ohlone Riders	Julie Evans and Miranda Bender Kenneth J. Binder

NEW MEMBERS, *continued*

Redshank Riders	Tracy Bassett Cindy and Doug Hay Patty Kendall Carole Kossuth Scott Lamky and Claudia Beutel Marlene Plattel Jill and John Roberts Christina C. Roberts Victoria Rothlisberg
Redwood	Dean, Connie and Shelby Rothlisberg George and Eugena Foster Margaret Hague Susan and Tony Luis Gwyneth Moreland and Skyler Hinkle Lori Swanson Davy and Bonne Wright
San Diego	Ken and Diana Clark Bobbi Remnant Nikki Tremblay-Nelson and Brent Nelson Karen Ensall
San Gorgonio Pass	Lee Kelly-Gillen
San Joaquin Sierra	Shelly and Bryant Berry Nola Cannon and Albert Albertson Javen Espinosa Denise Firpo Kim Lemon Dawn and Jim Smith
Santa Ana River	Jackie Leopard Michele Price Paul and Gail Van Velzer Rebekah and Paul Wan
Sequoia	Chris Borba Brandy Goss Patsy Hulse and Frank Avila III Nathan, Jamie, Grace, Aidan, Amelia Osborn Walter A. and Jacqueline Thomas
Shasta Trinity	William C. and Vicky Bowman Sherry Garvin Kathy Grissom Judy and Hal Pflueger Kathryn Teixeira Jarl Viale
Sierra Freepackers	John R. Sanders and Nancy A. Brown
Sutter Buttes	Raeline Perry
Top Of The State	Dana Ayers Dann and Becca Menne Carla Mazzini

Information

GoodDining
You Dine, We Give!



Dining to Support Back Country Horsemen of America - BCHA
Your Supporters Can Earn Up To 6% When They Dine

www.goodsearch.com

SAVE TIME AND MONEY BY SHOPPING ONLINE!

Earn **cash back** while shopping from home! Search for deals such as free shipping, instant savings, coupons, and more by visiting www.zamzoo.com/bchc

Some of the key features you'll find on the BCHC shopping website include:

- Apparel and Accessories
- Automotive
- Electronics
- Health and Beauty
- Home and Garden
- Movies, Music and Entertainment

The Ultimate Shopping Experience!

Please help to make this exciting new program a success for the Backcountry Horsemen of California!

Book all travel at:

www.ytbtravel.com/bchc



Start shopping on-line at:
www.zamzoo.com/bchc

THE BCHC EDUCATION FUND IS A 501(c)3 NONPROFIT ORGANIZATION

A donation in the amount of your choice is tax deductible.

You can now donate easily and quickly, using a major credit card or PayPal.

Simply go to the BCHC website (bchcalifornia.org),

Scroll down to the bottom of any page, press the **DONATE** button and help us in our many efforts.

THANK YOU!

IN CONCLUSION: Secretary Kay Bruns shared a couple of photos from the combined Education and Public Lands meeting in October 2013.



Recognition of Special Individuals

THANK YOU FOR YOUR SUPPORT!!

Benefactor Funds are used in a variety of ways to support BCHC's Public Lands activities. Uses of Benefactor Funds may include but are not limited to hiring consultants to perform in-depth reviews, financing special studies and reports, and reducing out-of-pocket travel expenses for those who testify at state and federal hearings.

BENEFACTORS

Antelope Valley	Stephen and Marry Ann Colf Heidi Furer
Eastern Sierra	Bill Carter Susie Harms Michelle Layne James B. and Judy L. Waggoner
High Country High Sierra	Harry B. and E. Jean Weir Richard and Dena Cochran Carl and Frances Dobler Ruth Gerson Nancy Hamill Dennis and Cathlyn A. Keller Bruce Miller
Kern River Valley Kern Sierra	Ken and Betty Finch Brad Allen Robert Anderson Boyce 'Buzz' R. and Joann F. Caffee Mylon and Pat Filkins Lynn and Odell Joiner Larry and Pat Mumford
Los Padres	Robert E. Acquistapace Kaye Bruns Otis Calef Doug and Leanne L. Campbell Robin Cederlof William Chaides and Nancy Kimmell Eve, Sean, Sarah and Jacob Devine Si and Karen Jenkins James McGarry Richard Renck Glenn and Karen Teixeira Karen Barindelli Jay and Elizabeth Barnes Gary A. and Michelle L. Cain Dennise A. Davis Rien and Lieske Doornenbal Lloyd and Susan Erlandson Carol Jo Hargreaves and Larry Schneider Karen C. Hurley David and Kristine Kraft Bob and Sandra Magee MID VALLEY UNIT - BCHC Dan & Toni Peterson Dennis M. and Loretta Serpa
Mother Lode	Ken and Gerry Bourn Judy and Bob Suter
North Bay	Alan and Carolyn Mahoney

BENEFACTORS, *continued*

Ohlone Riders	Sarah and David Schoen
Redshank Riders	Ken and Allison Renck
Redwood	Maris Hawkins
San Diego	Allie Heary Kathy Scaramella Tom Shea Lynda and Michael Sterns Sterling H. Wolfe, Jr.
San Gorgonio Pass	Chip and Linda Herzig Peter and Diana Kriger Devon and Shelly Riley Ron and Korky Robertson
San Joaquin Sierra	Kenneth and Diane Dalby Fred and Suzanne Gleason Larry Nishma Linda Steiner
Santa Ana River Sequoia	Pat and Maia Wolff Laure Stern Jamie Wilson, DVM
Shasta Trinity	Alice Eileen Cox Lori and Gary W. Henderson Barry and Jennifer Powell
Sierra Freepackers Sutter Buttes	Joyce and John Granger Larry E. Kling Corky Layne Ulla Park

PATRONS

High Sierra	Jeff and Alice Kampen Marty Morehart Karl and Trish Pendergraft
Mid Valley Sequoia	Terri Arington Jim and Pat Holly Larry and Jody Young

MT. WHITNEY

None at this time

**DO YOU
WANT TO START A NEW UNIT?**

If there is no unit in your area and you are interested in starting one, contact BCHC Secretary Kaye Bruns for more information.

(661) 944-4927

BCHC Units Around the State

Antelope Valley

PO Box 84
Pearblossom, CA 93553
Kelly Carle

iacarle@yahoo.com

Eastern Sierra

202 Sierra Grande
Bishop, CA 93514
Florene Trainor
(760) 872-2215
florenetrainor@yahoo.com

High Country

PO Box 1672
Alturas, CA 96101
Alan Cain
530-233-4062

High Sierra

PO Box 4427
Visalia, CA 93278-4427
Christine Burns
(559) 623-2288
casheepmom@yahoo.com

Kern River Valley

3561 Jeffrey St.
Lake Isabella, CA 93240
Larry Cigainero
(760) 379-5920
larrybchc@aol.com

Kern Sierra

16347 Stephenie St.
Bakersfield, CA 93314
Curtis Harms
(661) 978-9630
mulerider@prodigy.net

Lake-Mendo

PO Box 1201
Lakeport, CA 95453
Paul Villanueva
(707) 263-0147
Villan13@pacific.net

Los Padres

PO Box 1857
Paso Robles, CA 93447
William Chaides
(805) 471-1197
bchaides@tcsn.net

Mid Valley

PO Box 1709
Modesto, CA 95353
Michael King
(209) 606-8393
mickngig@sbcglobal.net

Mother Lode

PO Box 2088
Elk Grove, CA 95759-2088
Mike Kohlbaker
(916) 214-6505
4horsen@sbcglobal.net

North Bay

1055 W College Ave
PMB 153
Santa Rosa, CA 95401-5036
Thor Bodtker
(415) 328-4545
thunder.t@hotmail.com

Ohlone Riders

PO Box 5262
San Jose, CA 95150-5262
Kathy Smith-Woods
(408) 266-9828
ksmithwoods@yahoo.com

Redshank Riders

PO Box 383
Aguanga, CA 92536-0383
Anne York
(951) 662-2928
anne@starfiredesignstudio.com

Redwood

PO Box 792,
Ferndale, CA 95536
Carole Polasek
(707) 786-9637
muleride@frontiernet.net

San Diego

236 Oak St
Ramona, CA 92065-1952
Patty Heyden
(760) 788-0354
pheyden54@gmail.com

San Gorgonio Pass

28797 Live Oak Cyn Rd.
Redlands, CA 92373
Pete Kriger
(909) 910-4619
pkrigerjr@yahoo.com

San Joaquin Sierra

PO Box 25353
Fresno, CA 93729
Joe Kaminski
kaminskiel@comcast.net

Santa Ana River

PO Box 736
Norco, CA 92860
Thad Chodakauskas
(951) 312-0724
ctchod@aol.com

Sequoia

PO Box 456
Springville, CA 93265
Jan Walker
(559) 310-5794
qhbrat@hotmail.com

Shasta Trinity

PO Box 287
Anderson, CA 96007
Alan Hill
530-221-8531
thill2011@gmail.com

Sierra Freepackers

PO Box 64
Oakhurst, CA 93644-0064
Mary Odell
(559) 658-7563
modell@sti.net

Sutter Buttes

110 Medley Lane
Oroville, CA 95966-9649
Bob Gage
(530) 521-7369
bobgage@wildblue.net

Top of the State

PO Box 461
Etna, CA 96027-0461
Joe Croteau
(530) 468-2339
jjcroteau@sisqtel.net

Membership Matters

Contact Membership Coordinators, Chip and Linda Herzig. They will be happy to address your questions or concerns. Chip and Linda may be reached Monday through Friday.

By mail: BCHC Membership
1280 State Rt 208
Yerington NV 89447

Email: membership@bchcalifornia.org

Phone: (775) 463-3634



Planning a Trip? Use

**BCHC
EARNS 60%
OF THE
COMMISSIONS!**
For the Latest Deals
go to



www.ytbtravel.com/bchc

- You will find the same airlines, hotels, rental cars and cruises as on other travel websites!
- You'll get great travel prices!
- Each time you book travel a portion of the travel commissions will go to support BCHC!

It's that simple!

QV Custom Saddles by Steve Edwards

We make custom saddles...from "Show" to "Go"

The Rancher

Built "extra tough" to stand up to rugged, everyday use. Built on mule bars that Steve has used for over 15 years. These bars are a proven great fit on mules. The wood trees in these saddles are designed by Steve Edwards and covered with "ultrahyde", a durable space-age material, to prevent warping. Steve has never found a mule that his bars will not fit! 16" or 17" seat, 7/8 & 3/4 rigging plate and fleece-lined skirt. Comes with nylon front and rear latigos, smooth or buckaroo padded seat. \$1595



"Steve, the expert packer in Washington, I packed and packed for 20 years. I made in 2006 the expert, hard working saddle. I had a lot of work to be made in 2006 saddle (to compare) the. Steve's fine, great saddle." - Mike Wilson

The Ranch Hand

LIMITED EDITION SADDLE
Totally custom built, the Wade Slick Fork tree is built for tough work, yet it is a piece of art. This saddle is built on a wood tree with "ultrahyde" cover, basket stamping, buckaroo seat, stainless steel hardware, mule head conchos and basket stamped tapaderos. 14", 15", 16" or 17". \$1895



INTRODUCING

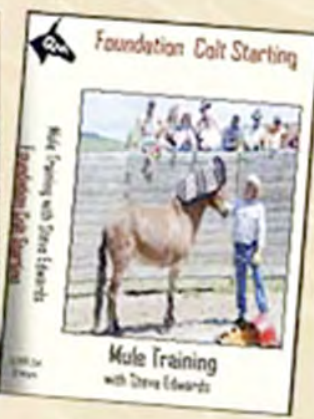
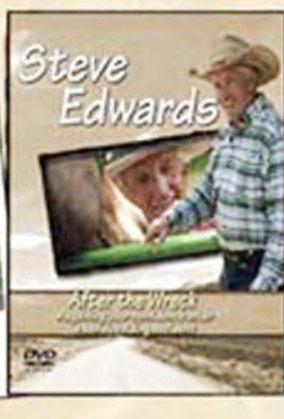
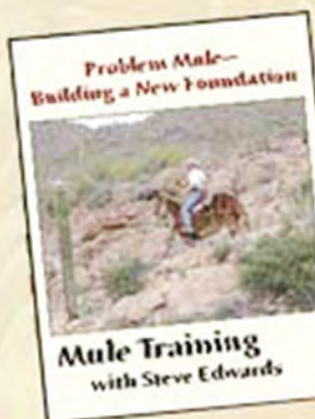
the all new Signature Series mule head conchos exclusively on Steve Edwards tack. You will not find these beautiful conchos anywhere else!



Steve Edwards Mule Pad by Reinsman

Designed and field tested by Steve Edwards AND HIS PACKERS specifically to fit mules and are American made. Soft, colorfast top, edges bound in genuine black wear leathers. The non-slip bottom is anti-bacterial, breathable and allows moisture to pass through while helping to keep the saddle in place.

Close Contact - \$90 • Heavy Duty Close Contact - \$110 (plus \$20 sh)



Steve Edwards Collection of Instructional Videos

Check out Steve's website www.muleranch.com for his full line of instructional videos, which cover topics from "Communicating with Mules" to "Driving and Packing Basics" to "Hobbling, Highlining and Picketing" to "Colt Starting" to "Fixing the Problem Mule."

Queen Valley Mule Ranch

Steve & Susan Edwards
602•999•MULE (6853)

1 1855 W. Running Deer, Queen Valley, AZ 85118

steve@muleranch.com

Go to www.muleranch.com to view our entire selection of mule saddles and tack

www.muleranch.com