

BCHC
BACKCOUNTRY HORSEMEN
OF CALIFORNIA
13061 Rosedale Hwy
Suite G, Box 21
Bakersfield, CA 93314
ADDRESS SERVICE
REQUESTED

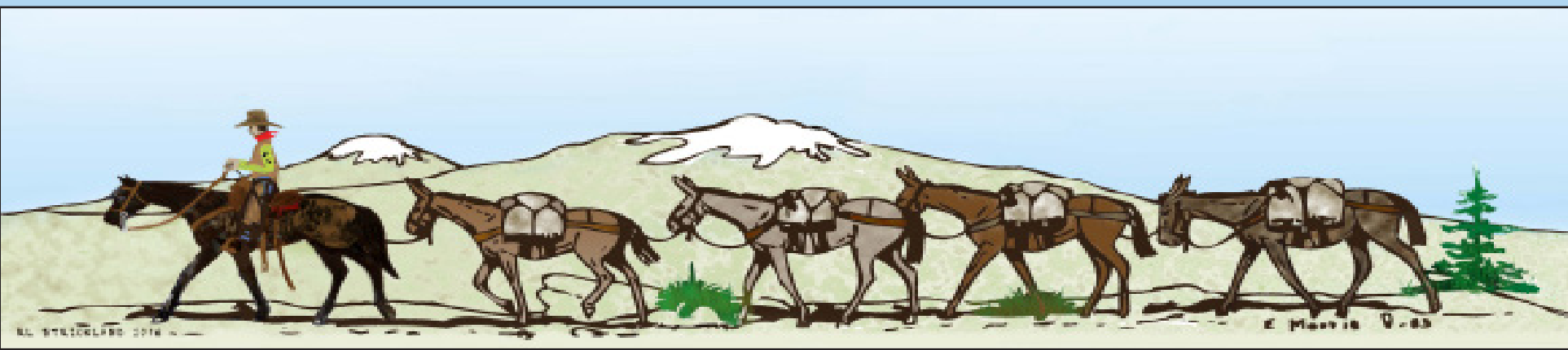
FIRST-CLASS MAIL
PRESORTED
U.S. POSTAGE PAID
SACRAMENTO, CA
PERMIT #328360

The Backcountry News

Volume 36, Issue 1

The Official Publication of Backcountry Horsemen of California

WINTER 2024



RENDEZVOUS

“TRAILS AND TALES”

Friday and Saturday, March 22-23, 2024

Diamond Bar Ranch

Ceres, CA

By Michael King

Yes, Rendezvous 2024 is right around the corner. Located in Ceres, California, the venue is pretty much at the center of California. Our faithful friends from the extreme ends of the state will benefit from not having to travel so far this year to attend. Another benefit to our venue is that we have the use of the facility from Thursday, March 21, to Sunday, March 24, so you can arrive early and stay late.

For those who wish to make use of motel accommodations, there are several very nice motels in Turlock within 15 minutes of the venue. Two are just a couple of years old. Look elsewhere in this edition of the Backcountry News for some recommendations.

BLM will be at Rendezvous with a good selection of quality stock captured from public lands, available for adoption. Steve Bauhr, a very qualified local horse trainer, is scheduled to take one of these animals and have a two-day demonstration on gentling and training it. This is a tremendous opportunity to observe one man's methodology in working with these animals and will help you to know what to do when you arrive home with your adopted equine.



2024 Rendezvous artwork by Sharon Power

The Backcountry News

An internal publication of the Backcountry Horsemen of California

Editor Carol Jo Hargreaves

BCHCNewsletter@gmail.com

BCHC Official Website: www.bchcalifornia.org

Printed by The Manteca Bulletin

Publication Information: The Backcountry News is the official journal of the Backcountry Horsemen of California, Inc., published four times per year. All rights reserved. It is an independent publication with news and information of interest to Backcountry Horsemen members, with an average circulation of approximately 2,000 per issue. Annual digital and print subscriptions are \$15 for non-members. One free digital issue may be provided, upon request. Nonprofit postage paid at Manteca, CA.

Who is BCHC? The Backcountry Horsemen of California, Inc. is a 501c3 nonprofit organization incorporated in the State of California, March 13, 1990, with a 501(c)4 education foundation established in 2007. The Backcountry Horsemen of California, Inc., reserves the right to refuse any articles and/or advertisements that are not consistent with the Backcountry Horsemen of California's Objectives and Purpose statement. Other material will be printed at the Editor's discretion.

Disclaimer: Articles and advertisements that appear in The Backcountry News do not necessarily reflect the position or opinion of BCHC or its officers and members. Nor does publication of said articles and advertisements constitute endorsement of the views or of the goods or services offered therein that they may express. Accuracy of all material is the sole responsibility of the authors. BCHC is not responsible for unsolicited material of any kind.

Reader Submission: The Backcountry News welcomes reader contributions, event and calendar dates, and unit news. These will be printed on a space-available basis. Submissions should be sent in a Microsoft Word format to include author and photo credits. Longer articles are subject to edit for space at the discretion of the Editor. Photos may not be returned.

Deadlines: Advertising, announcements, pictures and other copy must be received at The Backcountry News by the deadlines listed below.

| <u>Edition</u> | <u>Deadline</u> |
|---------------------|------------------|
| Spring 2024 Edition | April 15, 2024 |
| Summer 2022 Edition | July 15, 2024 |
| Fall 2024 Edition | October 15, 2024 |
| Winter 2025 Edition | January 15, 2025 |

Advertising Rates per Issue: Rates effective January 2012. All ads must be paid in advance.

| <u>Number of Issues:</u> | <u>1</u> | <u>2</u> | <u>3</u> | <u>4</u> |
|---------------------------|----------|----------|----------|----------|
| <u>Full Page</u> | \$150.00 | \$142.50 | \$135.00 | \$127.50 |
| <u>Half Page (h/v)</u> | \$100.00 | \$95.00 | \$90.00 | \$85.00 |
| <u>Quarter Page (h/v)</u> | \$80.00 | \$76.00 | \$72.00 | \$68.00 |
| <u>Bus. Card (h/v)</u> | \$25.00 | \$23.75 | \$22.50 | \$21.25 |

Advertising: All ads must include all fonts and images used in artwork. Ads must be at a resolution of 300 pixels per inch at the actual size used in the artwork. Mail payment to the BCHC Treasurer. Checks returned from the bank will have a \$25 return check fee. No advertising will be accepted from advertisers with outstanding balances. Liability by The Backcountry News shall not exceed the space occupied by the error. Never shall The Backcountry News be liable for any general, special or consequential damages. All claims for adjustments must be made within 30 days of the first publication of said ad.

2024 EXECUTIVE COMMITTEE

Mike Hughes, President · (760) 223-0608 ·

4HRanch@earthlink.net

Jamie Wilson, 1st VP · (559) 202-7216 · drjamie91@gmail.com

Shirley Rasmussen, 2nd VP · (805) 610-0934 ·

shirleyjras@gmail.com

Susie Patton, Secretary · (760) 764-2850 ·

bludog46@gmail.com

Lynn Joiner, Treasurer, Chaplain · (661) 747-6347 ·

lynnjoiner7@gmail.com

Greg Feinberg, VP of Education · (805) 610-0934 ·

Feinberg.greg@gmail.com

Chip Herzig, VP of Membership · (775) 463-3634 ·

chipherzig@gmail.com

Troy Patton, VP of Public Lands · (760) 764-2850 ·

outdoortroy@gmail.com

Tammy Bozarth, Co-VP of Youth Education and COR ·

(661) 322-2545 · spashiners@yahoo.com

Gail Inman · Co-VP of Youth Education · (559) 359-6027 ·

gail.inman@gmail.com

Michael King, Immediate Past President · (209) 606-8323 ·

mickngig@sbcglobal.net

Randy Hackbarth, BCHA Nat'l Director · (530) 626-0571 ·

trlyrder@pacbell.net

Larry Shuman, BCHA Nat'l Director · (530) 526-0590 ·

lshuman62@gmail.com

Terry Jorgensen, BCHA Alt. Nat'l Director · (760) 789-5185 ·

tlh9749@yahoo.com

2024 COORDINATORS

Accounting - Hardaway, Axume, Weir, CPAs

Annual Meeting - Susie Patton · (761) 764-2850 ·

bludog46@gmail.com

Insurance - Jamie Wilson · (559) 202-7261 ·

drjamie91@gmail.com

Membership Communication Coordinator - Alyssa Alvarez ·

(858) 248-9296 · bchc.coordinator@gmail.com

Newsletter Editor - Carol Jo Hargreaves · (209) 988-5831 ·

BCHCNewsletter@gmail.com

Rendezvous General Chairman, Sergeant at Arms - Lloyd

Erlandson · (209) 761-3942 · Lloyd.erlandson0@gmail.com

Saw Coordinator - Mike Lewis · (951) 760-9255 ·

stumblinl55@gmail.com

Volunteer Hours Reporting - Shirley Rasmussen, 2nd VP ·

(805) 610-0934 · shirleyjras@gmail.com

Webmaster - VACANT

Youth Coordinator, Custodian of Records · Tammy Bozarth ·

(661) 332-2545 · spashiners@yahoo.com or

bchc_cor@yahoo.com

PRESIDENT'S PAGE

Fireside Chat

As I serenely sit here beside the wood burning stove, staring intently into the dancing flames, a snowstorm is raging outside. This becomes a perfect time to reflect on where BCHC is going and to reminisce about where we have been over the last couple of years.

We have remained diligent in updating bylaws and upgrading policies. We have been active in keeping public lands and trails

open and safe for users, such as

the Mines to Pines trail. We have countered the state bill to require diapers on horses. Not even the homeless are required to wear them. We are rebuilding the BCHC website from the ground up in a user-friendly model. We completed a successful Rendezvous in Temecula. We continued the positive interaction with governmental agencies on backcountry projects including the special use of chainsaws to clear trails in the wilderness. We proceeded with the education of the public, administrators, and politicians regarding the dangers of mixing e-bikes, hikers, horsemen, and other trail users. We are diligently working on the upgrades to the BCHC youth program and representing that community.

There has been a changing of the guard among our officer positions both at the state and unit levels. We are welcoming all new BCHC officers and bidding a grateful and fond farewell to those retreating. The new officers can be found listed in the Directory of State and Unit Officers as formulated by BCHC state Vice President of Membership, Chip Herzig. On the state level, the new Vice President of Education, Greg Feinberg, has requested that the current sitting chair of the Wilderness Riders Committee, Stacy Kuhns, remain in order to utilize her years of experience in this role.

Our imminent focus, however, must now turn to blending the new personalities into the existing BCHC units' boards. We must be aware that new ideas will be presented, and we must be open and receptive to these new concepts. This in no way changes our basic mission statements:

“To improve and promote the use, care and development of California backcountry trails, campsites, streams and meadows.

To advocate good trail manners.

To promote the conservation and utilization of our backcountry resources in concert with livestock transportation.

To keep the backcountry trails and forage areas open to horsemen on all public lands.

To keep current information before the corporation membership and its local units regarding new legislation or management plans related to government regulations of the backcountry.

To support or oppose new proposals, plans and restrictions as related to the interest of horsemen and those persons interested in recreational stock use and enjoying the backcountry.

To promote the interest of people who, due to health or physical factors, need transportation other than by foot on backcountry trails.

To promote public awareness and interest in the historical aspect of horsemen and stock in the backcountry.

To help backcountry users on ways to use the trail and forage in a manner that conserves backcountry resources.

To assist in keeping the public informed of the vital need for a clean backcountry.

To promote a working relationship with and keep the work and interests of the corporation before, local, state and federal officials.

To assist in the formation and continuation of local units to carry out these purposes.”

The foregoing are the BCHC Objectives and Purposes as outlined in Article II of the BCHC state bylaws.

Over the years I have heard the old adage that there is no “I” in team. To this I would respectfully disagree. As a new officer at the state or unit level, your first thought should be how can “I” enhance and become a contributing member of an already functioning board or team? The answer is “I” should forward ideas which “I” understand will be modified, blended, and compromised together with worthwhile ideas put forth by other peers and leaders. These proposals will be hammered into the semifinal product which will be reviewed and voted on by all the unit members and solidified into the final form. Therefore, it is appropriate to envision the impact the final product will have on the overall BCHC organization.

A case in point is the new BCHC website. With the driving force of C.J Hargreaves, Tammy Bozarth, Hayden Hargreaves and with the assistance of many, many more, they are bringing about a rebuild from the ground up. It will be a more approachable, user-friendly technologically advanced format. There has been a tremendous dedication and commitment to getting the website up and running. A deep measure of gratitude for all of those involved goes out from the BCHC Executive Committee.

I have said many times in the past that our greatest strength lies in our applied unity. With this thought in mind, over the next two years, I look forward to working with each and every one of you whether it be at the Officers' Trainings, the Rendezvous, or any other place along the trail we find ourselves.

Now back to the warmth of the fire. Just saying.

Mike Hughes
President

Backcountry Horsemen of California

BCHC NEWS



**BCHC Editor
Carol Jo Hargreaves**

HAPPY NEW YEAR!

A new year is a chance for a fresh start, an opportunity for new beginnings. In my job as BCHC Editor, at the beginning of each new year I update all newly elected Unit Presidents' contact information for Page 18 and was thrilled to see so many different names. Thank you for accepting the challenge and stepping up into this important leadership role! You will learn and grow in more ways than you can imagine.

Another new thing is the size of the Backcountry News. You might notice that it's a little less "tall" than it has been for many years. Manteca Bulletin, the company that prints the paper for us, decided that all the many small newspapers it publishes should be the same size, thus saving the cost of buying different sizes of paper and reducing the extra effort of switching paper sizes for each different job. A wise business decision for them and basically a one-time bit of extra effort for me, setting up different margins and reducing the size of some of our "permanent" content.

A new year is also a time of renewal, hope and unity. With newly elected officers at the state and unit levels, we have an opportunity for fresh insights and new ideas. We have a different sort of Rendezvous coming up in March to which we look forward for its fun, camaraderie and unifying impact on BCHC. Coming together for a common purpose with like-minded people is an opportunity not only to learn and grow but also to renew your excitement about BCHC and to unify the organization. This edition of the Backcountry News includes information from front to back about the March 22-23 Rendezvous in Central California. I hope you will attend. Even if it is a long way for you to travel, YOU are an important part of Backcountry Horsemen, adding to the strength and voice of our organization just by attending. Put it on your calendar and make the effort to participate.

One more new thing. What about writing the upcoming newsletter deadlines on your calendar? Calendar a note to yourself, too, one or two weeks before the deadline. Take the opportunity to share an article and photos about your unit. Let every BCHC member know what your unit is doing. Here are the remaining 2024 deadlines: April 15, July 15 and October 15. Easy-peasy, right?

Thanks for being a member of BCHC!

Remember to let me know, in advance, if you would like extra copies of the paper printed to distribute at upcoming events/activities.

DON'T MISS THESE IMPORTANT DEADLINES!

February 1 - Volunteer Hours Report – send to 2nd VP (Service)

February 22 - Insurance Renewal Application – send to 1st VP (Insurance)

February 28 - Financial Statement – send to BCHC State Treasurer

February 28 - Unit Report of Activities – send to BCHC State Secretary

AWARD NOMINATIONS/ENTRIES-

- February 1 - Public Lands (Ann Lange and Ben York)
- February 1 - Education- Unit/Individual
- February 1 - Top Hand (Unit Presidents select)
- February 5 - Newsletter (Max & Irene Cochran Journalism Award)

MANZANITA RIDERS UNIT HOSTS FIRST 2024 LEADERSHIP TRAINING SESSION

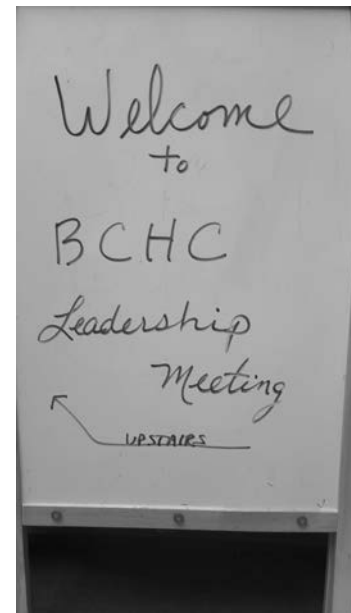
By Terry Jorgensen

To start off the New Year, the Manzanita Riders hosted the Southern California region's Leadership Training meeting. We chose the location of the Marietta Tractor Supply because it is conveniently located just off the I-215 in Marietta, CA. Tractor Supply was very accommodating and let us use their training room at no cost. Aaron, the store manager, had been the manager at the Ramona Tractor Supply and we had worked with him in the past to do unit-sponsored Tack Sales. Manzanita Riders unit members gathered up coffee makers, some breakfast snacks and fresh fruit and headed up to Marietta. It was a great day with lots of education and getting to see old friends and make some new one. Plan to attend the Leadership in your region.

Here's the schedule:

Central Region - Jan. 27 - Westwood Large Animal Vet Clinic, 27114 Ave 140, Porterville

Northern Region - Feb. 24 - Dunstone Hall, 4790 Foothill Blvd., Oroville



2024 RENDEZVOUS NEWS

RENDEZVOUS, continued from Front Page

You won't want to miss that.

Unfortunately, due to a glitch, the BCHC website is down and not operable. In lieu of that resource the Rendezvous Registration Packet has been electronically mailed to each unit's current or incoming President and Vice President. Contact one of them to get the packet or download the packet from the Mid Valley Unit website at <https://www.bchcmidvalley.org> Get that packet back in to BCHC before 2/15/24 and you will be able to get a 10% discount on your registration.

If that doesn't work for you, email me at mickngig@sbcglobal.net, or call me at 209-606-8323. Do not delay, we will get a packet sent to you post haste.

Attending Rendezvous is an excellent way to connect with BCHC members from across the state and share stories, experiences and ideas. We hope that you will plan to come to Ceres and support your organization. Remember, you get out of an organization what you are willing to put into it. BCHC is your frontline defense in protecting your right to access and use public lands. We must never become complacent in our support of BCHC.

See all of you in March!

**More Rendezvous information
on the Back Page**

ONLINE RENDEZVOUS REGISTRATION PACKET

Use this URL to download the Registration Packet if you want to attend or to compete in any events:

<https://www.bchcmidvalley.org>

Everyone is welcome! Please direct all questions to the folks listed in the packet.

**10%
DISCOUNT ON
REGISTRATION!**

Get your Rendezvous Registration
Packet back in to BCHC before
2/15/24

RENDEZVOUS LOCATION AND HOURS

Diamond Bar Arena
6055 Central Ave
Ceres, CA 95307

Gates open at 8 a.m.
Classes start at 9 a.m., Friday
and Saturday
Registration Booth open 7 a.m.
to 5p.m.

RENDEZVOUS 2024 HOTELS IN CERES, CA

Best Western Inn
5025 N Golden State Blvd
Turlock, CA 95382
209-667-2827

Microtel Inn and Suites
1760 Herndon Rd
Ceres, CA 95307
209-225-9261

Howard Johnsons
1672 Herndon Rd
Ceres, CA 95307
209-537-4821

Fairfield Inn
3301 Countryside Dr
Turlock, CA 95380
855-816-6193

Holiday Inn Express
3001 Hotel Dr
Turlock, CA 95380
209-664-9999

There are no special rates at any motels. Best Western is the closest to the venue.

Table Decorations Contest

**LAST TIME THE WINNER
WAS HIGH SIERRA UNIT.
THEY WILL JUDGE THE 2024
CONTEST.**

Tables will be assigned by the Table Decorations Committee by 10 a.m. on Friday. Units may begin decorating @ 10 a.m. until Friday at 5 p.m. The judging will take place after 5 p.m. and awards will be presented at Friday evening's award presentation. All units that decorate a table will automatically be entered. The BCHC unit name must be clearly visible. Entries over 3-feet tall will be disqualified. Judge's decisions are final.

We would like to sell these decorations at the dinner. If you do not want your decoration(s) sold, please remove after judging or put a sign "Do Not Sell."

We will have members of the public attending our dinners. As BCHC members, we are the hosts and should extend a warm welcome to other members as well as the public to join us at our tables.

Winner of the Best Overall category is responsible for coordinating and judging next year's Table Decorations Contest.



THANK YOU, 2023 RENDEZVOUS SPONSORS!

BCHC sincerely thanks the following 2023 Rendezvous sponsors for their generous support.
Please visit and support these businesses when you have the opportunity.

\$2,500 Sponsors



Star Milling Co.®



Integrity®

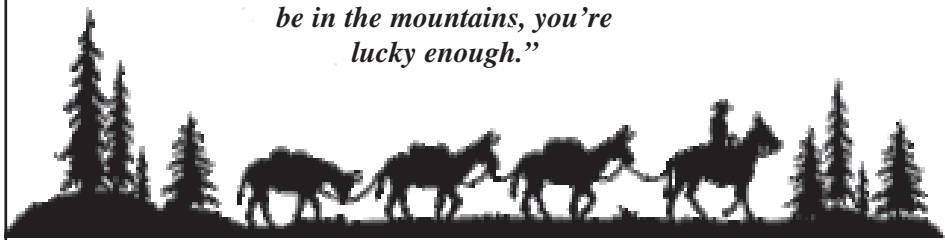
\$500 Sponsors



\$1,000 Sponsors

Thank you for \$1,000 sponsorship from Terri Arington in memory of her late husband, Ron Arington. Ron was a longtime Ag teacher at Sonora High School. He was passionate about the back country, his horses and mules, his students and his wife.

*"If you're lucky enough to
be in the mountains, you're
lucky enough."*



THANK YOU, RENDEZVOUS SPONSORS!

BCHA: Dedicated to keeping trails open for everyone



BCHA 2024 National Board Meeting

March 24-27, 2024

Ramkota Hotel & Conference Center

800 N Poplar, Casper, Wyoming 82601

Hotel phone: 1 (307) 266-6000

Hotel website: www.ramoktacasper.com

Find prices and register for the meeting on the BCHA website at: bcha.org



Send your membership renewals to VP of Membership Chip Herzig. **DO NOT SEND THEM TO BCHA.** Sending to the wrong place will delay payment and cause your membership to show as expired so you cannot participate in unit events.

FEBRUARY 2024 STATE BOARD MEETING

Executive Committee: Friday, February 9
Benji's French Basque Restaurant, 4001
Rosedale Hwy @ 5:30 p.m.

State Board: Saturday, February 10
Rio Rancho Equestrian Center, Bakersfield
@ 9 a.m.

Eddie & Kellie Pogue

Collectors of
Old West History

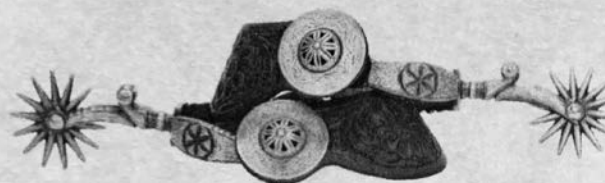


WANTED
Quality Old West
Collectibles

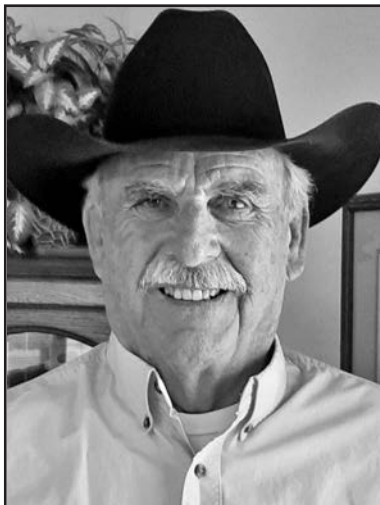
Guns, Bits, Spurs,
Saddles, Hats, Boots,
Chaps, Art & Quality
Western Antiques

Appraisals

Bakersfield, California
Hm# 661-871-8808
Cell# 661-331-5231
walkingbox@aol.com



PUBLIC LANDS



**BCHC VP of Public Lands
Troy Patton**

I have four important things to share in this edition.

BCHC Public Lands Ann Lange Award

Nominations for this award are **DUE**

February 1, 2024

Unit Presidents and Public Lands Chairs are invited to send nominations to Troy Patton for consideration by a panel of judges.

Following is a description and the criteria to consider when making your nomination:

Anne Lange was a founding member of BCHC. Her focus was always on trails and maintaining them for pack stock use. She was a powerful voice with BCHC, BCHA and in Washington, D.C.; always advocating for trails and to keep them open.

This award is presented annually to a unit member

who has consistently worked in Public Lands and goes above and beyond in the Public Lands arena, improving trails, meeting with agencies, and advocating for trail improvement. The nominee should have a true passion for preserving Public Lands.

Unit Presidents and Public Lands Chairs are invited to nominate candidates for this award. A committee of three, headed by the Vice President of Public Lands will review the nominations and choose the recipient.

Since the panel of judges (Northern region: Cindy McMurry, Central region: Troy Patton, and Southern region, Terry Jorgensen) may not know the nominee personally, they will be judging largely from the description you send in. You may wonder why we need the nominations so early. This is because the actual award presented to each year's winner is specially selected to honor that particular winner's interests. For this reason, the award will differ each year.

California State AB 233 (2023 session)

You might remember that this controversial bill about manure removal would authorize a local agency to adopt an ordinance requiring the owner of, or person otherwise responsible for, an animal to collect and dispose of any animal excrement deposited by that animal on public or private property. BCHC and other horse groups objected to its application to public lands. This section was taken out, put back in...

The bill was read the first time January 12, 2023. After much back and forth between the Assembly and Senate, as well as amending its wording, the bill was ordered to its third reading on June 22, 2023. No final decision was made and time ran out for getting the bill to the Governor's desk for signature. On September 7, 2023, Senator Glazer (not the bill's author) ordered the bill to the "inactive file," possibly to encourage its author to take up his bill promptly. This means the bill is now considered dead or dormant. The author may move his bill off the inactive file at a later date, rename it, renumber it, republish it singly, attach it to a longer bill where it might not be noticed, or attach it to a bill that both houses want to pass. The bill's future remains to be seen.

As we wait to learn its final outcome, as the conscientious equestrians and BCHC members, that you are, please remember to clean up after your animals regardless of where you are.

eBikes in Tahoe National Forest

On October 23, 2019, backcountry trail and forest groups in California joined together in filing a suit challenging the USFS decision to allow motorized bikes to operate on non-motorized trails in the Tahoe National Forest.

Plaintiffs in the suit included the Gold Country Trails Council, Backcountry Horsemen of California, Back Country Horsemen of America, the Forest Issues Group and The Wilderness Society. The groups are represented by the Western Environmental Law Center.

This Pines to Mines project proposed development of a multi-use native surface trail system connecting Nevada City to Truckee. The system would be approximately 68 miles in length and would include existing Forest Service trails and new trail construction in Yuba River Ranger District, Sierraville Ranger District and Truckee Ranger District.

BCHA led the national charge urging decision-makers to use caution when allowing electric bikes on multi-use trails without careful consideration of safety and compatibility concerns. BCHC's President Mike Hughes signed on to the letter of opposition sent by Randy Rasmussen, BCHA's Director for Public Lands & Recreation. This puts BCHC on record as opposed in case someone decides to litigate the matter in the future.

Recently, however, Forest Supervisor Eli Ilano issued a draft decision notice finding "no significant impact" and chose Alternative #2, allowing eBikes on the trail. Although incidents have been reported by Gold Country Trails Council and other groups that frequently use the trail, many complaints seem to have been ignored in the decision-making.

In My Humble Opinion: Bylaws effect public lands

Many things effect public lands in our organization. Our BCHC Bylaws contain sections describing our objectives and purpose in protecting and preserving public lands. They explain officer and director responsibilities. They set forth the code of conduct for members and leaders. Bylaws are supposed to accurately describe how BCHC works and what it does. If we start to do something new or differently, our Bylaws should be revised to include that information. It is a "living document."

For almost three years, the BCHC Bylaws Committee has been reviewing, suggesting revisions and introducing new Bylaws. (They are doing a commendable job!). Advance drafts are sent out for review. Each Director on the State Board is responsible to carefully consider proposed changes and consult with unit members before voting.

EDUCATION



**VP of Education
Greg Feinberg**

Hello from Education VP,

Is everybody enjoying the cold weather? Seems like it's putting a damper on things but not like our friends to the east of us.

One Leadership Training down and two to go. Stacy Kuhns ran her last BCHC Education obligation in Temecula on Saturday, January 6. Sorry we didn't have a bucket of cold water to dump on her! Thank you, Stacy, for all you've done

over the years and your efforts to make a smooth transition for me.

The next Leadership Training will be in Porterville on Saturday, January 27. Units needing to attend will be Sierra Freepackers, San Joaquin Sierra, High Sierra, Sequoia, Kern River Valley, Kern Sierra, Los Padres, and Mid Valley.

The last training will be in Oroville on Saturday, February 24. Units needing to attend will be Mother Lode, Sutter Buttes, Lake-Mendo, Redwood, Shasta Trinity, Top of the State, High Country, and North Bay.

Hope to see you there on your training dates.

Greg Feinberg
VP Education



Tom Firth



Stacy Kuhns



**Outgoing VP of Education
Stacy Kuhns**

EDUCATION 2023 OVERVIEW

By Stacy Kuhns, outgoing VP of Education, current Wilderness Rider Steering Committee Chair

Backcountry Horsemen of California (BCHC) is a provider for Leave No Trace, offering Master (Level 2) Courses specializing in Pack Stock. We have partnered with Leave No Trace in Colorado (Center for Outdoor Ethics).

Our goal is to learn how to minimize impact and educate. We teach how to teach others the seven Leave No Trace principles. Do you know them? The seven principles are as follows:

1-Plan ahead and Prepare, 2-Travel and Camp on Durable Surfaces, 3-Dispose of Waste Properly, 4-Leave what you find, 5-Minimize campfire impact, 6-Respect Wildlife and 7-Be Considerate of others

Thomas Firth, Stacy Kuhns and Ken Graves attended the annual providers meeting in Colorado via Zoom this year. We discussed changes in the curriculum and added material and resources offered. We have a Masters (Level 2) Course scheduled for spring 2024 with BLM employees. There will be a Global Summit in Boulder, Colorado in the fall of 2024.

BCHC also offers a Wilderness Riders program in California which is the Master (Level 2) Course with a twist that partners with the following agencies: BLM, USFS and NPS in California. The volunteer program has specific items that need to be completed annually while involved with this volunteer program.

BCHC has also streamlined our Intern Program with USFS Packing. We have a committee that works on the Grant Writing for help funding the program in addition to working with our partnerships with USFS and Eastern Sierra Conservation Corps (ESCC) for the hiring process.

Discover Our Exciting New Stock Use Course!

Join experts Bob Hoverson and Smoke Elser in this FREE 60-minute Leave No Trace course, mastering the principles and more for stock use outdoors. Enroll now to elevate your outdoor skills and respect for nature! Take our FREE Leave No Trace 101 basics course, available at the following link:

<https://learn.lnt.org/courses/stock-use>

UNIT ACTIVITIES

MOTHER LODE UNIT:

TELLS CREEK CAMP TELLS A TALL TALE

By Lucy Badenhoop (pictures by volunteers)

The high Sierra Nevada mountains around Lake Tahoe only have a few trailheads that allow horse camping and Tells Creek Equestrian Camp is one of them. The camp sits at an elevation of about 6,500 feet, so the work was delayed in 2023 due to snow on the six-mile access road until mid-July. This trailhead and trail system was hard hit by the 2022-23 winter storms.

Three regional volunteer organizations coordinated a four-day work party to clean it up in late July. The Elegant Ears Mule Association organized the effort and invited Backcountry Horsemen of California - Mother Lode Unit (BCHC-MLU) and the Georgetown Divide Equestrian Trails Foundation (GDETF) to help, which they did. It's a small camp, but 15 volunteer rigs squeezed into 10 camp sites and arranged some potluck meals.

The prior week, Elegant Ears had cleared trees off the road and the trailer parking spaces, but the general area looked like a lumber camp – down trees and logs everywhere (see top photo). Elegant Ears said they would bring in heavy construction equipment to haul the debris away later, but this work party was to open the trails.

The sawyer group split up to work various trails simultaneously. About a half dozen trails were cleared using 220 hours to open about 30 miles of trail and buck over 70 trees off the trails (see center photo).

A small group stayed in camp to rake debris from around the fire rings and picnic tables. They also collected loose rocks to repair the trailhead loop road that had foot-deep trenches from the massive snow melt (see bottom photo).

The same three organizations had previously worked together in April to do similar cleanup for the Dru Barner Equestrian Camp and trail system near Georgetown, CA (lower elevation). That trailhead was larger, with 40 campsites, and required about 500 hours of volunteer labor.

In both locations, the Eldorado National Park rangers posted signs advising the public that the camp was “administratively closed.” This ensures the work crews will have ample camping spaces for their volunteers and keeps the public out of the danger zone during the work project with chain saws, pack stock, and heavy construction road equipment. Sadly, some campers ignored the restrictions and camped anyway, thus interfering and making the volunteer job more difficult.



Editor's Note:

My sincere thanks to Lucy Badenhoop for her patience and understanding. Lucy submitted this article for the Summer 2023 edition of the Backcountry News and I lost track of it until now. Thanks, Lucy!

UNIT ACTIVITIES

MID VALLEY UNIT:

COLUMBIA ALL-EQUESTRIAN CHRISTMAS PARADE

By Barbara Savery, John Marshall and Kathy Zumbrunn

Photos by Kathy Zumbrunn

The Columbia All-Equestrian Christmas Parade returned with a bang on Sunday, December 10. With 22 entries and hundreds of spectators, the parade reclaimed Columbia State Historic Park after a one-year absence.

This parade is sponsored by the Mid Valley Unit and was spearheaded by a committee composed of Barb Savery, Deb and Scott Lewis and Steve and Brenda Bauhr. Committee members want to thank everyone who helped, especially Doug and Cathy Dollarhide who did a great job of handholding and who answered dozens of questions. Also, in no particular order: Alice Lawellin, Joe Pimentel, Alex Moore, John Marshall, Dennis and Jamie Ponte, Terri Arington, Chris Marcus, Rick and Joan Tilbury, Vicki Morales, Kathy Zumbrunn, Tori James, Tom Nankival of Clarke Broadcasting, Dave and Sally Forrest and their 4-H pooper scooper assistants . . . and, of course, Santa and Mrs. Claus.

The weather was perfect and all the decorated entries were beautiful. Mid Valley Unit was represented by approximately 20 riders and animals. Other participants included old favorites like Tuolumne County Sheriff's Posse and Twain Harte Horsemen as well as new entries like Horses of Warriors, Hope's Chance Horse Sanctuary and Tuolumne County Special Olympics. Dennis Ponte drove a glorious white carriage pulled by two matching white Percherons to deliver Santa and Mrs. Claus (played by Kevin Kirschman and Terri Arington) to the waiting crowd.

Spectators and parade participants donated a mountain of toys to the ATCAA Housing Families Program. Jim Ayers, who picked the toys up after the parade, was momentarily speechless when he caught sight of the heaped piles of new toys. These wonderful donations guarantee many children a very happy Christmas! And that has always been the purpose of this parade!



GOOD NEWS FOR

BCHC INTERN - FUNDING PLAN UPDATE

By Lucy Badenhoop

Photos of past Interns taken from Backcountry News archives



Kristianne Morrison



Julia Heller

Until 2022, BCHC funded its annual packing internship with internal donations. The USFS Center of Excellence (COE) has the capacity to train six interns, but BCHC has struggled to fund one each year.

In 2022, BCHC received its first grant for the Intern Program through the efforts of Dennis Serpa. After that initial success, I was requested to expand the grant efforts. While I have years of experience with grants for trail projects, the Intern grants are unique in some ways.

First, 50-50 matching funds are required, whereas trail grants generally accept “in-kind” contributions as a substitute for cash. For the interns, the in-kind donations seem to be more of a ranking factor, not a substitute for the cash. Second, they mostly are administered by private nonprofit foundations, not government agencies. Therefore, the selection criteria and process timing varies from government practices. Third, some grantors won’t allow overlapping grants – you must close out one grant, before another application is allowed. This places high importance on timely submission of the final report showing what was accomplished with input from the intern.

During my new 2023 experience with funding the Intern Program, I realized this was a long-term commitment for BCHC and needed long term funding solutions, like an endowment fund. However, that effort had to be temporarily shelved to smooth out the transition plan to include grants in the short term.

The intern schedule needed funding in place by 1 Feb (see chart PROJECT CRITICAL PATH).

| INTERN PROJECT CYCLE | Jan | Feb | Mar | Apr | May | Jun | July | Aug | Sep | Oct |
|------------------------------|-----|-----|-----|-----|-----|-----|------|-----|-----|-----|
| Flyer Publicized | xx | | | | | | | | | |
| 1 Feb Funding Go-No-Go | | | | | | | | | | |
| Receive Applications | | | | | | | | | | |
| 1 Apr Intern interviews | | | | | | | | | | |
| 15 Apr Intern selection | | | | | | | | | | |
| 15 May Intern at ESCC | | | | | | | | | | |
| Intern working at COE | | | | | | | | | | |
| | | | | | | | | | | |
| | | | | | | | | | | |
| | | | | | | | | | | |
| | | | | | | | | | | |
| | | | | | | | | | | |
| PROJECT CRITICAL PATH | | | | | | | | | | |

Note: The chart includes a vertical orange bar for May, a vertical blue bar for April, and a horizontal blue bar from June to October. Text labels include: '1 Feb Go-No-Go; Appl Open' (Jan-Feb), 'Candidates accept offers' (Apr-May), and 'Start COE Pack Season' (Jun-Oct).

The funding plan needed to support the 1 Feb Go-No-Go decision point. Some grants have multiple submissions throughout the year. Others tend to accept applications in the fourth quarter (Oct-Nov-Dec) for the following year’s awards. This means that BCHC matching cash needs to be identified at the time of the grant application in the fourth quarter.

To meet this grant application requirement, BCHC had to modify its internal funding process. The matching 50-50 donations would be needed by January. To implement this change, unit pledges were requested at

INTERN FUNDING

the October State Board Meeting for payment in January. Based on the October pledges, grant applications could reflect the 50-50 funding match for January in time for grant awards to begin the Intern Program.

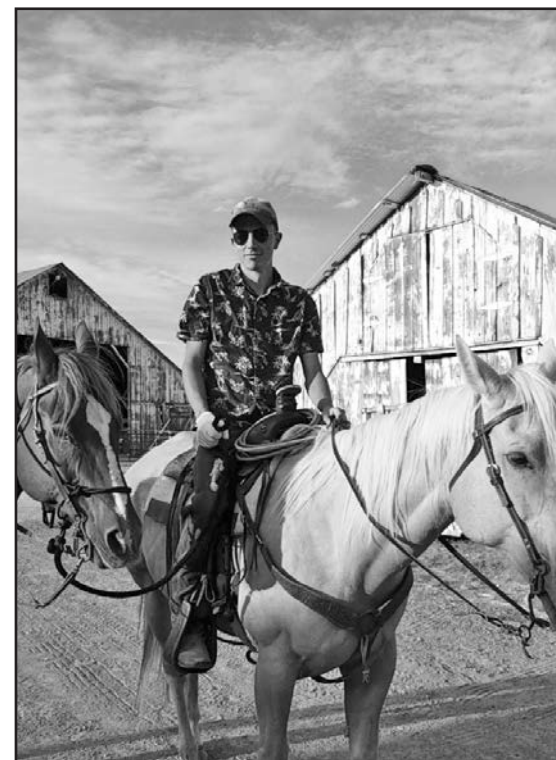
It's a tight schedule, but workable (see chart FUNDING CRITICAL PATH).

| INTERN FUNDING CYCLE | S | O | N | D | J | F | M | A | M | J | J | A | S | O |
|--------------------------------|---|---|---|---|---|---|---------------------------|---|---|---|---|---|---|---|
| Units approve next year pledge | | | | | | | | | | | | | | |
| BCHC mtgs – status report | | | | | | | | | | | | | | |
| Units send pledge check | | | | | | | | | | | | | | |
| Grant applications/awards | | | | | | | | | | | | | | |
| Grant final reports | | | | | | | | | | | | | | |
| | | | | | | | | | | | | | | |
| | | | | | | | | | | | | | | |
| | | | | | | | | | | | | | | |
| | | | | | | | | | | | | | | |
| | | | | | | | | | | | | | | |
| FUNDING CRITICAL PATH | | | | | | | 1 Feb Go-No-Go; Appl Open | | | | | | | |
| PROJECT CRITICAL PATH | | | | | | | | | | | | | | |

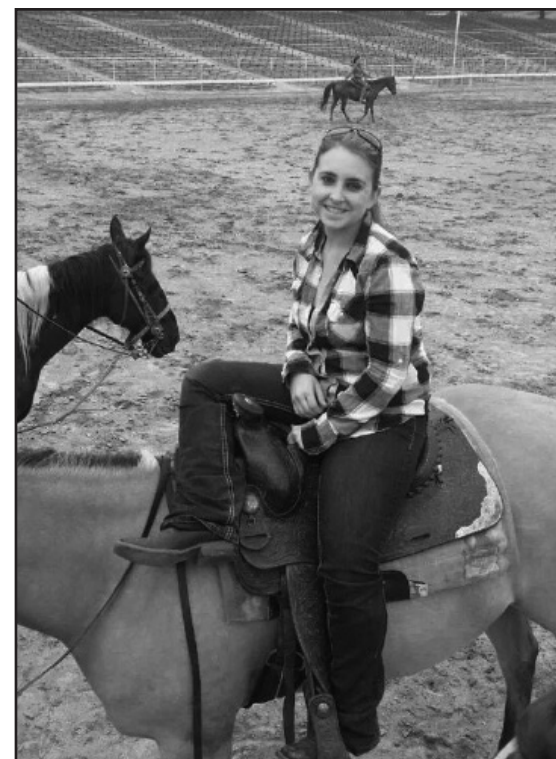
This pledge schedule was implemented in late 2023 for the 2024 internship cycle. One grant and sufficient pledges were obtained in 2023 to fund one 2024 intern. If additional pledges are received in time to acquire additional matching grants, multiple interns can be funded. Any late or unused funds/grants roll to the next year. Status reports are provided at the February and October BCHC State Board Meetings.

This early funding guarantee allowed the BCHC Intern Committee to shift focus toward recruiting and selecting quality candidates. John Reade of Bishop Mule Days provided contacts for each of the five colleges that supply student pack teams for the annual May competition. In January 2024, they will receive intern application packets to use as a recruitment tool in forming their student pack teams. In return, BCHC gets highly motivated intern candidates who already have some packing and stock handling skills.

While initial results are encouraging, BCHC will continue to adjust this funding plan as experience dictates any changes needed. Once the 50-50 grant/pledge plan smooths out, BCHC will refocus on the endowment idea to provide stable long-term funding for the interns.



Justin Giusti



Bailey Mello

FROM INTERNAL DONATIONS TO A LONG-TERM FUNDING SOLUTION THROUGH GRANTS & PLEDGES

UNIT ACTIVITIES

LOS PADRES UNIT:

LOS PADRES UNIT CONDUCTS CHAINSAW CERTIFICATION

By John R. Gleason, VP Los Padres Unit

On November 18 and 19, 2023, the Los Padres Unit of Backcountry Horsemen held a Chain Saw Certification Course. The class was conducted at the Lopez Recreational Area in Arroyo Grande, San Luis Obispo County.



The class was taught by Mike Lewis, BCHC Saw Coordinator from the Redshank Riders Unit, Patrick Shreffler, Saw Trainer from the Kern River Valley Unit, Greg Feinberg and John Gleason, Saw Trainers in training from the Los Padres Unit.

We had 15 Backcountry Horsemen from the Los Padres Unit attend, 12 of whom were brand new members. One Backcountry Horseman from the Antelope Valley Unit attended for a re-certification.

The classroom portion of the Saw Training was held at the Camp Mable French Hall on Saturday, November 18. It was a great venue and, luckily for us, we were inside when the predicted rain came and lasted most of the day. We got a break in the weather in the afternoon that allowed some hands-on training on chainsaw maintenance and saw chain sharpening.

The Chainsaw Bucking Qualification took place Sunday, November 19.

Sunday turned out to be a partly sunny, gorgeous day. We split the participants into four groups. Mike, Patrick, Greg, and John each had a group of participants. After donning the required personal protective equipment and identifying the required safety features on their chainsaws, each group of participants mustered at individual cut sites to demonstrate their bucking ability.

The class was well received by participants, each one earning the beginning Level A or B – Chainsaw Bucking Certificate.

The training was made possible with the assistance and coordination from a lot of folks. Los Padres Unit members, San Luis Obispo County Parks for the location, SLO Post members providing coffee, muffins, and sandwich fixings. Shirley Rasmussen of Los Padres Unit coordinated delivery of dinners for Friday and Saturday nights. We had planned to use the oven in the hall for Saturday night's dinner, however the oven was not working. Lucky for us, Patrick's wife Carrie warmed up the meal in the Shreffler motorhome. No easy feat in an RV oven but it came out perfectly. Thanks, Carrie!

TOP OF THE STATE UNIT:

SPOOKY GOOD TIME AT HALLOWEEN-THEME OBSTACLE COURSE CHALLENGE

Article by Michele Machado Woods

On October 21, 2023, the Top of the State Unit hosted our fourth annual Spooktacular Trail Obstacle Course Play Day and Challenge competition at the Machado Ranch in Big Springs.

We added several new “spooky” decorations to our course, including a life-size horse skeleton with his own rider and a giant spider with human victim to our “bone yard” obstacle, and a life-size buck deer to our “animal safari” obstacle. The course featured more than 25 obstacles for all skill levels.

We had 30 riders for practice/play and our competition, including four youth. This is an increase of at least 10 from previous years. The gusty Big Springs wind made some of the obstacles and decorations even more intimidating. We appreciate all of our volunteers/helpers who made this event possible. Big thanks go out to the Machado family, including Michele Machado Woods and Alan Woods, for creating such a fun course and hosting this event each year. Our unit enjoys hosting this type of events because they often result in attracting new members.

Photos of Obstacle 1, Obstacle 2, and Obstacle 3 (at right) courtesy of Michele Machado Woods

TOP OF THE STATE UNIT HONORED TO CARRY COLORS FOR CHRISTMAS PARADE

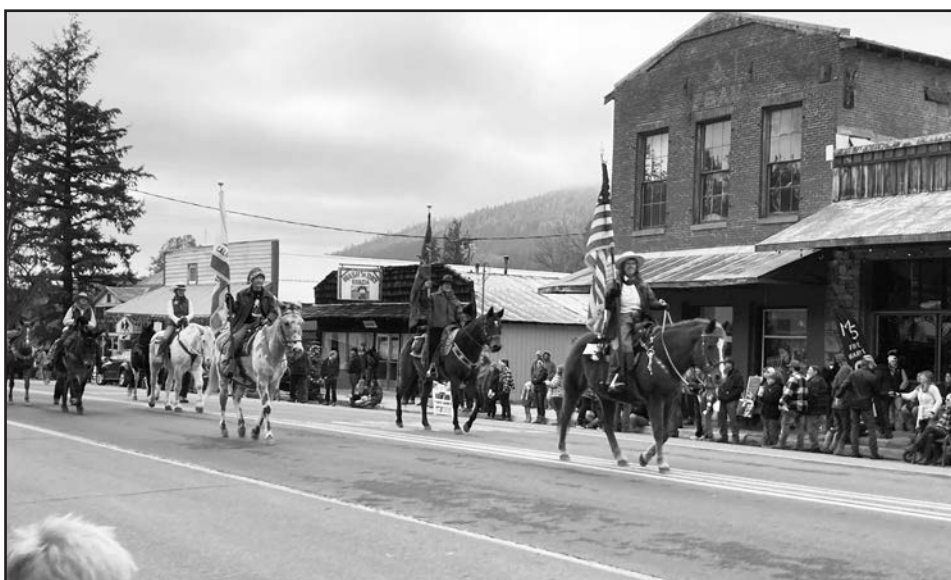
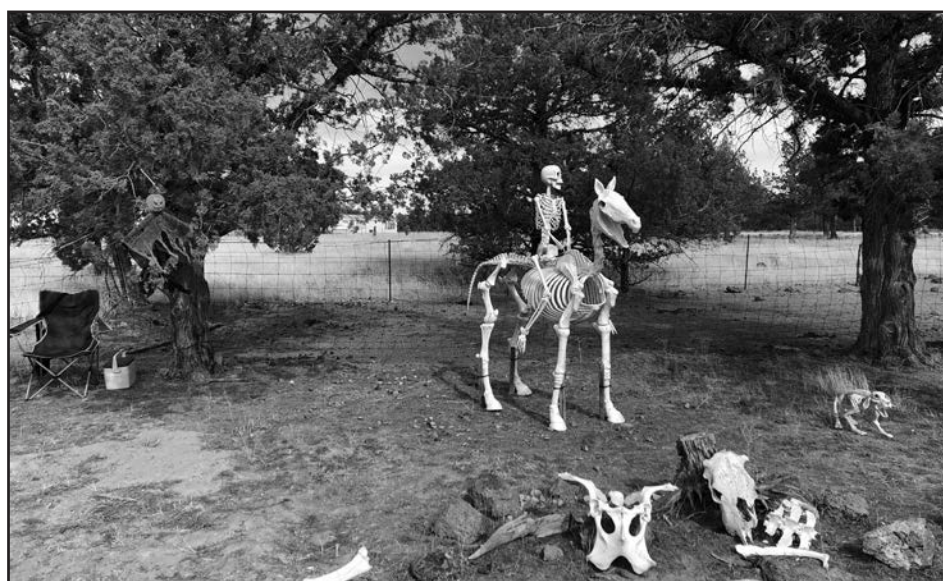
Article by Michele Machado Woods

Over the years, it has become a tradition for the Top of the State Unit to carry the U.S. and California flags to start the Fort Jones Christmas parade. 2023 was no exception.

On December 9, our unit riders Kelly York, Erica Fruht and Shirley Tickner proudly carried the U.S., California and BCHC flags to start the parade. We enjoy this honor because it brings welcome attention to our unit and to Backcountry Horsemen of California and allows us to show our pride in country and state all at the same time. The Fort Jones parade is a favorite in Siskiyou County, and it was very well attended this year. We look forward to carrying the flags again in 2024.

Fort Jones Parade photo (at right) courtesy of Kelly York

UNIT ACTIVITIES



Events such as the Halloween obstacle course held by Top of the State Unit not only challenge riders' skills but also attract new members to BCHC.

Parades are usually attended by many spectators and are a great way to get the word about Backcountry Horsemen - Who We Are and What We Do.

Recognition of Special Individuals

Benefactor funds are used in a variety of ways to support BCHC's Public Lands activities. Uses of Benefactor funds may include but are not limited to hiring consultants to perform in-depth reviews, financing special studies and reports, and reducing out-of-pocket travel expenses for those who testify at state and federal hearings.

SPECIAL MEMBERSHIPS

10/16/2023 through 1/15/2024

BENEFACTOR (\$100)

| | |
|--------------------|--|
| Antelope Valley | Marge Biehl |
| Eastern Sierra | Bill Carter |
| | Troy Patton |
| High Sierra | Ruth Gerson |
| | Nancy Hamill |
| | Jacob Hamstra |
| | Trish Pendegraft |
| Kern Sierra | Craig Gunderson |
| | Larry Mumford |
| Lake-Mendo | Tim Holliday |
| | Richard Knox |
| Los Padres | Kaye Bruns |
| | Robin Cederlof |
| | William Chaides |
| | Eve Devine |
| | Laura D. Wimer |
| Manzanita Riders | Lynda & Michael Sterns |
| Mid Valley | Tony Alamo |
| | Karen Barindelli |
| | Jay Barnes |
| | Gary A. Cain |
| | Bob Cooper |
| | Carol Jo Hargreaves |
| | Rian Hudson |
| | Debra Lewis |
| | Bob Magee |
| | John V. Marshall |
| | Jennifer Marshall |
| | MID VALLEY UNIT UNIT |
| | Randy Powell |
| | John Schaapman |
| | Les Weidman |
| Mother Lode | Tom Cooper |
| | Donna Jones Furlow |
| | Jaede Miloslavich |
| | Stephanie Williams |
| North Bay | Lynn Cominsky |
| Redshank Riders | Ron Robertson |
| Redwood | Carole & Darrel Polasek |
| San Joaquin Sierra | John Cunningham |
| | Larry Nishma, Knapp-Yosemite Trls Pk Sta |
| | Stephen Naylor |
| | Cathie Walker |

BENEFACTOR (\$100)

| | |
|----------------|--------------------|
| Sequoia | Kathryn C. Bennett |
| | Donald M. McMillan |
| | Frank Schlitz |
| | Jamie Wilson, DVM |
| Shasta Trinity | Lyle Charter |
| | Ken Hartman |
| | Lori Henderson |
| | George Poppic, Jr. |
| | Laura Rodger |

PATRON (\$250)

| | |
|----------------|------------------------|
| High Country | Lynn Saunders |
| High Sierra | Richard Cochran |
| | Karl Pendegraft |
| | Sonia Shepard McLellan |
| Kern Sierra | Willi Coeler |
| | Lynn Joiner |
| Los Padres | Otis Calef |
| Mid Valley | Dennis M. Serpa |
| Sequoia | Jan Walker |
| Shasta Trinity | Bruce McGowan |

MT. WHITNEY (\$500)

| | |
|------------------|-------------------|
| Eastern Sierra | Sarah C. Sheehan |
| Kern Sierra | Roger Whitaker |
| Mid Valley | Terri Arington |
| | Lloyd Erlandson |
| Mother Lode | Catherine Godwin |
| Pacific Crest | Craig Bugajski |
| Redshank Riders | Allison Renck |
| Shasta Trinity | Dean Angelides |
| Sutter Buttes | Kay Walters |
| Top of the State | Sarabecca Barnett |

WHY JOIN BACKCOUNTRY HORSEMEN OF CALIFORNIA?

As a member, you'll:

- Get to participate in state and unit activities
 - Learn valuable backcountry skills and outdoor ethics
 - Gain new friends from among our wonderful members
 - Receive the BCHC newsletter
 - Be kept up to date on public lands issues
- ...and more!

Even if you don't ride or aren't an active member, your dues contribute to our cause! You'll be helping pay for work projects, educational materials, training and insurances. Help support our efforts to keep trails open to equestrians!

WELCOME, NEW MEMBERS!

**We look forward
to meeting you!**

**The following new members joined BCHC from
10/16/2023 through 1/15/2024**

| | |
|--------------------------------|--|
| High Country | Glenna D. Eckel Cindy and Ken McDonald |
| Kern Sierra Los Padres | Michael Padilla Cristina Arevalo Clifton Braun Craig Campbell Sarah Colvin Jed Dawson Josh Garza Ron Holt Brent Kitagawa Kenny McCarthy Jon McKelvie Manny Silva Kevin Sulitz |
| Manzanita Riders Mid Valley | Elijah Shannon Kimberly Capps Kellie Case Myia Davila Mielle Hart Rick Hickman Kristin Holtsman Julia Kalika Jeremy Kassahn Steve and Carlena Kellogg Phoebe Koepele Julie Ann Livingston Anthony Perry Mia Ramirez Darlene Ramsey Cinnamon and Kenny Rigmaiden Tenaya Senser Morgan Sousa Kendra and Michael Thomason Darlene Tucker, Tom Pinter & Melissa Snyder Emilee and Joshua Venable |
| Mother Lode | Bonnie Coyne Bobby Knill Tracy and Madelyn Leach & Jamie Rayford Valerie Logsdon Ron Marcus Janis and Peter Rau Marianne Stuart |
| North Bay | Jessie Machen Vallerie Machen Cheryll Rugo |

| | |
|--------------------------------------|---|
| North Bay | Betty Sanders Addy Sarasy Curtiss Scarritt |
| San Joaquin Sierra Shasta Trinity | Andrea McFadden Jayna Gipson Justin and Lisa Morris Joanna Proctor Cindy and Tim Van Schooten |
| Top of the State | Kim and Mike Leckness |

TO JOIN OR RENEW BY MAIL

1. Fill out the MEMBERSHIP FORM, make a copy for your records. IMPORTANT: Youth Memberships MUST also print, sign, and mail these forms. Youth memberships will NOT be valid until the forms are received.

2. Mail the completed form(s) and check* to:

Chip Herzig
BCHC Membership
1280 State Rte 208
Yerington, NV 89447

*Please make checks payable to Backcountry Horsemen of California. (You may also pay via Paypal.)

TO JOIN OR RENEW ONLINE

1. Fill out the ONLINE MEMBERSHIP FORM, save it and print a copy for your records.

2. Submit the online form. A copy will be sent to Chip Herzig, VP of Membership. IMPORTANT: Youth Memberships MUST also print, sign, and mail these forms. Youth memberships will NOT be valid until the forms are received.

3. Pay with your Paypal

BCHC Units Around the State

ANTELOPE VALLEY

PO Box 84
Valyermo, CA 93563
www.bchc-avunit.org

Marcy Watton

(661) 878-1791
Mwatton@att.net

EASTERN SIERRA

17 Unit B Sunny Slope Rd
Crawley Lake, CA 93546

Anna Baglione

(209) 918-1210
albaglione@ucdavis.edu

HIGH COUNTRY

PO Box 161
Milford, CA 96121
<https://www.facebook.com/groups/170146466736818>

Cindy McMurry

(530) 640-0429
mcmurycindy@gmail.com

HIGH SIERRA

PO Box 6632
Visalia, CA 93290
www.highsierraunit.org
Dan Baumgardner
(559) 334-7731
danbdrafthorse@yahoo.com

KERN RIVER VALLEY

PO Box 9507
Lake Isabella, CA 93240
Laina Garcia
(661) 778-8527
moonlit-phantom@hotmail.com

KERN SIERRA

16347 Stephenie Rd
Bakersfield, CA 93314-9669
Curtis Harms
(661) 817-5452
mulerider2020@icloud.com

LAKE-MENDO

6980 Potter Valley Rd
Ukiah, CA 95482
Don Mackenzie
(707) 391-5278
mamasweeta@yahoo.com

LOS PADRES

Box 472
Atascadero CA 93422
www.bchc-lpunit.org
Greg Feinberg
(805) 458-2879
Feinberg.greg@gmail.com

MANZANITA RIDERS

1124 3rd Street
Ramona, CA 92065
Terry Jorgensen
(760) 789-5185
tlh9749@yahoo.com

MID VALLEY

PO Box 1709
Modesto, CA 95353
www.bchcmidvalley.org
David Rumsey
(209) 928-1041
davidsrumsey@yahoo.com

MOTHER LODGE

PO Box 702
North Highlands, CA 95660
www.bchcmdu.org
Randy Hackbarth
(530) 626-0571
trlryder@pacbell.net

NORTH BAY

PO Box 9435
Santa Rosa, CA 95405
www.northbayunit.com
Dan Horn
(707) 953-4903
bearstrap@msn.com

PACIFIC CREST

P.O. Box 720684
Pinon Hills, CA 92372
bchcpacificcrestunit.org
Jennifer Sponsler
(760) 868-1588
jnjspon@aol.com

REDSHANK RIDERS

PO Box 383
Aguanga, CA 92536-0383
www.redshankriders.com
Mike Lewis
(951) 760-9255
president@redshankriders.com
stumblin155@gmail.com

REDWOOD

PO Box 6023
Eureka, CA 95502-6023
www.redwoodunit.com
David Pritchard
(760) 791-2016
dfredpl969@yahoo.com

SAN JOAQUIN SIERRA

PO Box 25693
Fresno, CA 93729-5693
www.bchcsjsu.org
Jim Laber
(559) 250-7906
jimlaber218@gmail.com

SANTA ANA RIVER

PO Box 306
Norco, CA 92860
www.sarubchc.org
Lynda Wesch
(909) 910-3470
lyndawesch@gmail.com

SEQUOIA

PO Box 456
Springville, CA 93265-0579
www.bchc-sequoia.org
Jamie Wilson DVM
(559) 202-7216
drjamie91@gmail.com

SHASTA TRINITY

206330 Gas Point Rd Ste B2 #48
Cottonwood, CA 96022
www.bchcshastatrinity.org
Laura Rodger
(530) 347-9351
fordoglaura@sbcglobal.net

SIERRA FREEPACKERS

PO Box 64
Oakhurst, CA 93644-0064
www.sierrafreepackers.com
Patricia Vallentyne
(559) 760-6589
pcvallentyne@gmail.com

SUTTER BUTTES

2568 Lake Hills Dr
Butte Valley, CA 95965
Gary Paul
(530) 693-0420
muleguy54@gmail.com

TOP OF THE STATE

PO Box 461
Etna, CA 96027-0461
www.bchc-tos.com
<https://www.facebook.com/2273753019542490/posts/d41d8cd9/2686922421558879/>
Michele Machado
(817) 308-0258
meechele418@gmail.com

REMEMBER!

The BCHC Executive Committee no longer sends out membership renewal verification "green slips" via regular mail. Each unit president and membership chair will get their unit's data AND it will be put on the BCHC web page in the password protected section.

Questions? Membership Matters

BCHC VP of Membership is
Chip Herzig.

He will be happy to address
your questions or concerns.

Chip may be reached
Monday through Friday.

By mail: BCHC Membership
1280 State Rt 208
Yerington, NV 89447

Email: chipherzig@gmail.com

Phone: (775) 463-3634

MEMBERSHIP (Application form revised October 2023)

Backcountry Horsemen of California



MAIL TO: BCHC MEMBERSHIP
1280 State Rt. 208
Yerington, NV 89447

MEMBERSHIP APPLICATION

New Renewal
 Change

PARENT UNIT AFFILIATION: (Select and CHECK a Unit as your Affiliation)

- | | | | |
|--|---|---|---|
| <input type="checkbox"/> Antelope Valley | <input type="checkbox"/> Lake-Mendo | <input type="checkbox"/> Pacific Crest | <input type="checkbox"/> Shasta Trinity |
| <input type="checkbox"/> Eastern Sierra | <input type="checkbox"/> Los Padres | <input type="checkbox"/> Redshank Riders | <input type="checkbox"/> Sierra Freepackers |
| <input type="checkbox"/> High Country | <input type="checkbox"/> Manzanita Riders | <input type="checkbox"/> Redwood | <input type="checkbox"/> Sutter Buttes |
| <input type="checkbox"/> High Sierra | <input type="checkbox"/> Mid Valley | <input type="checkbox"/> San Joaquin Sierra | <input type="checkbox"/> Top of the State |
| <input type="checkbox"/> Kern River Valley | <input type="checkbox"/> Motherlode | <input type="checkbox"/> Santa Ana River | |
| <input type="checkbox"/> Kern Sierra | <input type="checkbox"/> North Bay | <input type="checkbox"/> Sequoia | |

DCTR (Your Membership Number): _____

MEMBER'S NAME - No Business Names, Print Clearly SPOUSE/CO-MEMBER'S NAME - MUST SHARE SAME ADDRESS

Street Address/PO Box _____

City _____ State _____ Zip Code (full 9 digits if known) _____ Area Code _____ Phone Number _____

Email Address: _____

Email Address: _____

Donation to BCHC Education Fund (Tax deductible) _____ Enclosed: \$ _____ Check No. _____

Parent Unit Membership Types (Check One)

- | | | | |
|--|--|---|--|
| <input type="checkbox"/> 1 Year Individual \$50 | <input type="checkbox"/> 1 Year Family \$60 | <input type="checkbox"/> Young Adult (18-25 years old) \$15 | <input type="checkbox"/> Benefactor \$100 |
| <input type="checkbox"/> 2 Year Individual \$90 | <input type="checkbox"/> 2 Year Family \$110 | <input type="checkbox"/> Youth (12-17 years old) \$15* | <input type="checkbox"/> Patron \$250 |
| <input type="checkbox"/> 3 Year Individual \$125 | <input type="checkbox"/> 3 Year Family \$150 | *Youth members MUST fill out BOTH Youth Membership forms (available online) | |
| | | | <input type="checkbox"/> Mt. Whitney \$500 |

Associate Memberships: An Additional \$15 PER UNIT is added to your Parent Unit Dues
Associate Memberships Unit Affiliations MAY NOT BE FOR THE SAME UNIT AS YOUR PARENT UNIT

Associate Membership for: _____ \$15/Unit
Unit Name (from above list)

Associate Membership for: _____ \$15/Unit
Unit Name (from above list)

_____ Add additional choices here

Please clip form along dashed line and keep the below portion for your records.

Parent BCHC Membership Types

Individual, Family, (Shared**), Benefactor, Patron, and Mt. Whitney
A Parent Membership is affiliated with a single Local Unit.
BCHC Members may NOT hold more than ONE active Parent Membership.

**A SHARED Membership if for two adults with differing last names who share a common address.

Associate Memberships

These special Memberships are only available to persons already holding Parent BCHC Membership. No one may sign up for an Associate Membership without 1) having registered one of the Parent Membership types, and 2) having selected Parent Unit affiliation.

Youth Memberships

Youth Memberships MUST be accompanied by a signed Youth Membership Permission Release and Youth Parent Permission Form. A Youth Membership is NOT valid until BCHC or the Parent Unit has received signed copies of these forms.

Complete information regarding BCHC Membership is available on the MEMBERSHIP TAB at bchcalifornia.org or call (775) 463-3634

KEEP FOR YOUR RECORDS

I submitted an Application Form for a new -

- | | |
|--|-------|
| <input type="checkbox"/> 1 Year Individual | \$50 |
| <input type="checkbox"/> 2 Year Individual | \$90 |
| <input type="checkbox"/> 3 Year Individual | \$125 |
| <input type="checkbox"/> 1 Year Family | \$60 |
| <input type="checkbox"/> 2 Year Family | \$110 |
| <input type="checkbox"/> 3 Year Family | \$150 |
| <input type="checkbox"/> Young Adult (18-25 years old) | \$15 |
| <input type="checkbox"/> Youth (12-17 years old) | \$15* |
| <input type="checkbox"/> Benefactor | \$100 |
| <input type="checkbox"/> Patron | \$250 |
| <input type="checkbox"/> Mt. Whitney | \$500 |

On that form, I also requested:
_____ Associate Memberships \$ _____
My Total Remittance: \$ _____
My Check Number: _____
Date Mailed: _____

Verification of BCHC Membership

Verification of BCHC Membership is available via:
1) BCHC Unit President's reports
2) BCHC Membership Chair reports
3) a self addressed stamped envelope submitted with this form
4) a valid email address



ONLINE RENDEZVOUS REGISTRATION PACKET

Use this URL to download the Registration Packet if you want to attend or to compete in any events:

<https://www.bchcmidvalley.org>

Everyone is welcome! Please direct all questions to the folks listed in the packet.

RENDEZVOUS

“TRAILS AND TALES”

Friday and Saturday, March 22-23, 2024
Diamond Bar Ranch, Ceres, CA

TRAIL.MANSHIP 101

Friday, March 22, 2024

Backcountry Horsemen of California Rendezvous 2024

Unique Opportunities

Choose 1-4 sessions
9am, 10am, 1pm, 2pm
Work with **your** horse
Experienced clinicians
Affordable \$10/session
Entry secures your spot
Session limited to 6 riders



**This is a hands-on
working clinic,
not a 'lecture demo'.**

Topics

Ponying, Lunging
Trail Equipment
Highline/Picketline
Hobbling/Ground Tie
Mounting/Rider Pick-Up
Drag & Stepmover Obstacles
* Prizes *



Location: Diamond Bar Arena 6055 Central Ave Ceres, California

Contact: Carlena Kellogg 209-505-0122 or Amanda Poiles 623-521-4304

Request an entry: ladyroughrider1@yahoo.com

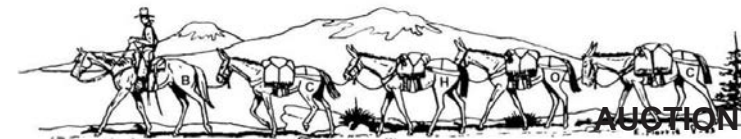
PACKING COMPETITION



WESTERN ART SHOW



AUCTION
CLASSES
RAFFLE
AWARDS
FRIENDS
FOOD
FUN



OBSTACLE COMPETITION at BHC Rendezvous

SATURDAY, MARCH 23, 2024

9:00AM WALK THROUGH WITH JUDGE, 10:00AM START TIME

OPEN TO THE PUB

DIVISIONS:

YOUTH

NOVICE

OPEN

PACKER

\$40

YOUTH: \$25

LOCATION: Diamond Bar Arena
6055 Central Ave, Ceres, CA



BUCKLES TO EACH DIVISION! CUSTOM PINS TO 10TH PLACE



DUTCH OVEN COOKING COMPETITION

